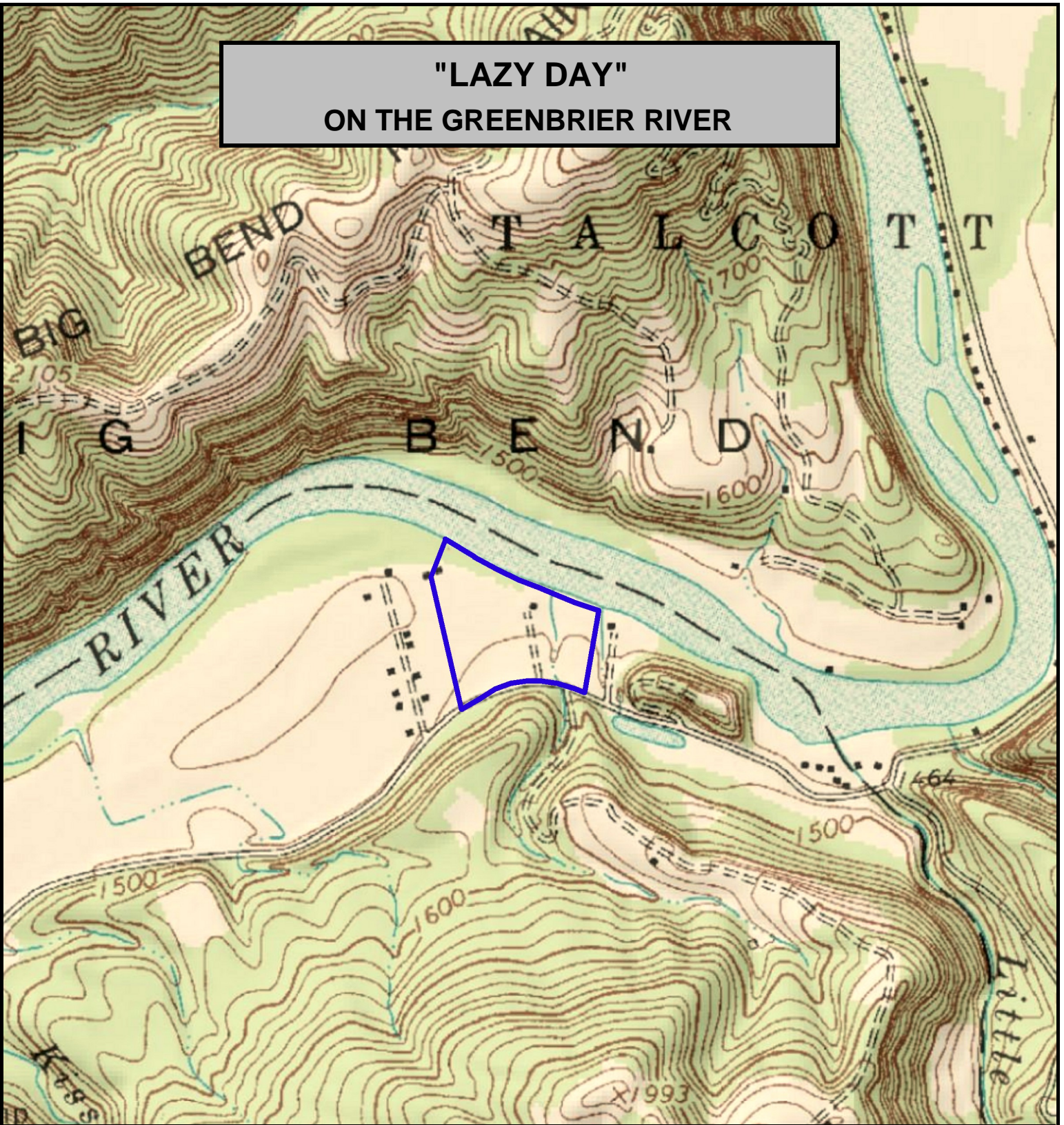


"LAZY DAY" ON THE GREENBRIER RIVER



LAZY DAY ON THE GREENBRIER RIVER, Summers County, WV
(topographic map)
Elevation Range: 1452' - 1479' +/-; Google Coordinates: LAT 37.613764 (N), LON -80.771010 (W)
This map is for general location purposes only. Consult a licensed land surveyor for actual boundary location and acreage.

FOR TOPO MAP SCALE 1:9600 1 INCH = 800 FT.

