

COUNTY Washington
RESOURCE # WSS-30
GROUP # _____
IDENTIFICATION _____
INTENSIVE _____
CATEGORY #s _____
PAGE 1 OF 3 PAGES

KENTUCKY HISTORIC RESOURCES
CONTINUATION SHEET
(KHC 91-4)

Comments/Historical Information (cont.): The building is divided into three bays visually with brick corbelled vertical divisions. Above the storefront is a concrete drip mold with a concrete belt course above. The building retains its false front with raised central pediment with sunburst detail (appears to be metal). The raised portion also contains the corbelled brick sign "McClure and Mayes" with corbelled dentil work above and below. At the top edge of the building, brick corbelling is used to create a dentiled cornice line. Second story windows appear to be metal sash replacements. The original openings have been partially filled with corrugated metal panels to accommodate the smaller replacements. The yellow brick veneer storefront has a door at the far left and another at far right which appear to provide access to the second story; these side doors have security storm doors and stucco-covered transoms above. At the center of the storefront is the recessed main entrance with replacement wooden double doors with rectangular glass lights. Display windows framing the doors are canted in slightly. Above the storefront bays, transoms have been covered in corrugated metal panels. Side window openings retain brick segmental arches above, but the windows themselves have also been replaced with the same smaller 6/6 d.h. metal windows. The space above replacement side windows is covered mainly by stucco-sided panels. Side bays are also visually divided by brick corbelled vertical divisions. Apparently through 1982, scales built into the street in front of the building were still used to weigh hogs and dry goods. This building is already listed on the NRHP in the current Springfield Historic Commercial District and is considered a contributing element within an expanded district.



(Above-left) This is a NE/NW elevation showing the façade and right side of the building. (Above-right) This is a SE/NE elevation showing the left side and façade of the building.

COUNTY Washington
RESOURCE # WSS-30
GROUP #
IDENTIFICATION
INTENSIVE
CATEGORY #s
PAGE 2 OF 3 PAGES

KENTUCKY HISTORIC RESOURCES
CONTINUATION SHEET
(KHC 91-4)

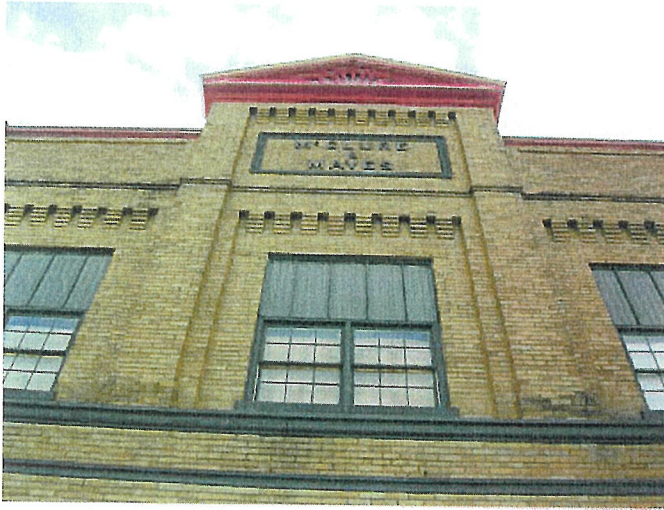


(Above-left) This is a photo of the SE elevation (left side) of the building. (Above-right) This is a detail photo of the window openings with replacement windows at the NW (right) elevation. (Below-left) This is a detail photo of the storefront. (Below-right) This is a detail photo of the second story façade.



COUNTY Washington
RESOURCE # WSS-30
GROUP # _____
IDENTIFICATION _____
INTENSIVE _____
CATEGORY #s _____
PAGE 3 OF 3 PAGES

KENTUCKY HISTORIC RESOURCES
CONTINUATION SHEET
(KHC 91-4)



(Above-left) This is a detail looking up toward the central, raised portion of the false front and the pediment. (Above-right) This is a detail photo of the recessed, main entrance.