



**Jett Blackburn  
Real Estate Inc.**



# Tennyson Avenue Buildable Lots

## \$35,000 - \$44,000



Contact Card

Presented by  
Colby Marshall  
Jett Blackburn Real Estate  
707 Ponderosa Village, Burns OR 97720  
Phone (541) 573-7206 \* Fax: (541) 573-5011  
[colby@jettblackburn.com](mailto:colby@jettblackburn.com)  
[www.jettblackburn.com](http://www.jettblackburn.com)





**LEGAL DESC:** T23S R30E Sec 23, Sec 14  
**LOT SIZE:** Parcel 1 - .57 acres - 24,850 sqft (+/-)  
Parcel 2 - .57 acres - 24,850 sqft (+/-)  
Parcel 3 - .57 acres - 24,850 sqft (+/-)  
Total - 1.71 acres - 74,550 sqft (+/-)  
**PRICE:** Parcel 1 - \$44,000 - 446 West Ridge Ave, Hines OR 97738  
Parcel 2 - \$42,500 - 436 West Ridge Ave, Hines OR 97738  
Parcel 3 - \$35,000 - 428 West Ridge Ave, Hines OR 97738  
**TAXES:** Parcel 1 - Tax Lot 111 - \$376  
Parcel 2 - Tax Lot 142 - \$376  
Parcel 3 - Tax Lot 148 - \$376  
**ZONING:** Residential  
**WATER:** City of Hines; service lines  
**SEWER:** City of Hines; Discharge line run under Tennyson Avenue  
**POWER:** Oregon Trail Electric Cooperative  
**FINANCING:** Cash & bank financing  
**REMARKS:** Residential lots in the heart of Hines, Oregon! There are over 74,000 square feet of space located just minutes away from schools and community services. Located in a central location and a desirable area, construction opportunities are waiting for the development of your dream home!

**Portions of the lots are overlaid by FEMA 100 year floodplain**

<https://map1.msc.fema.gov/firm?id=4100850001C>

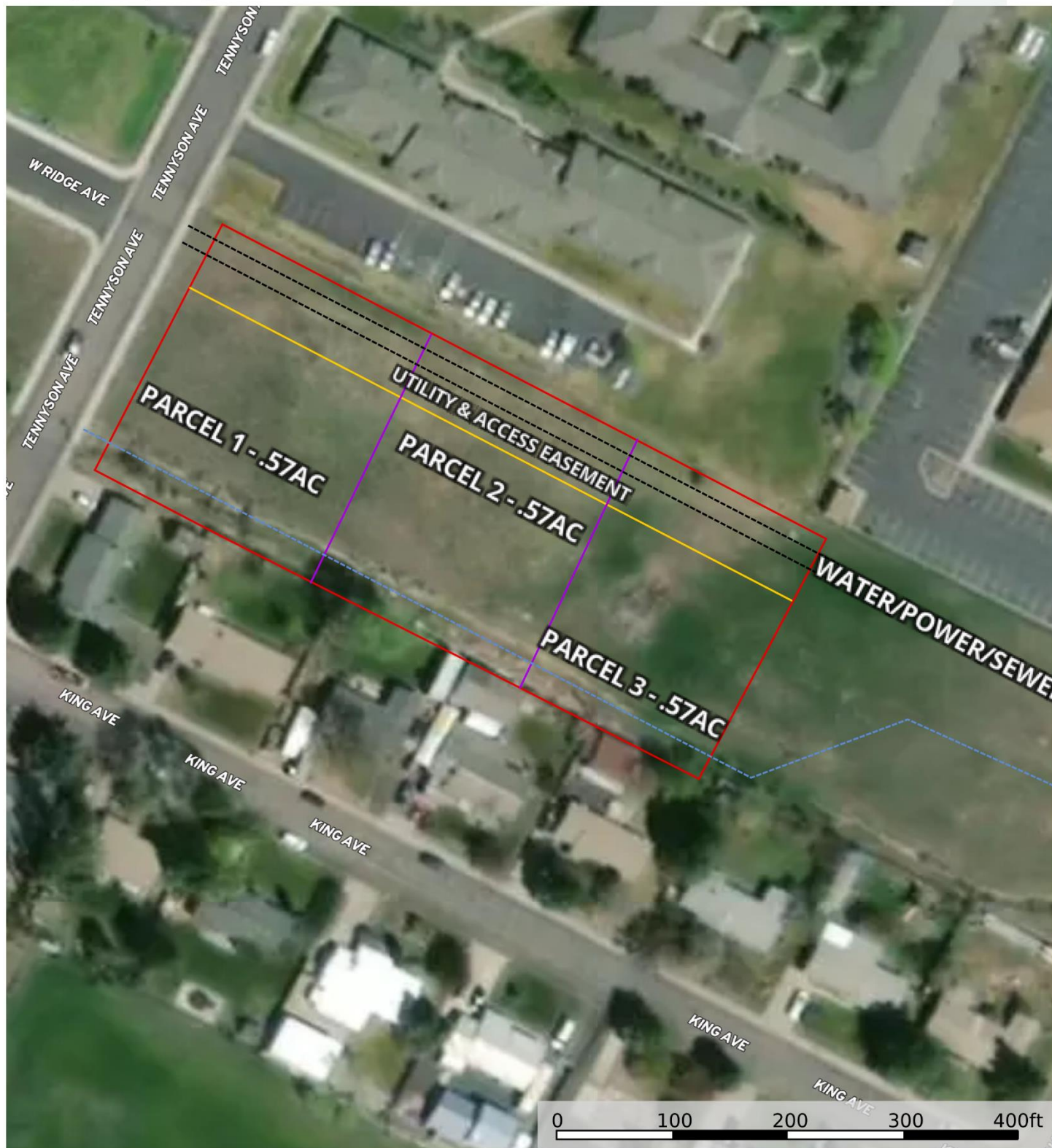






# Christen - Tennyson Ave Lots

Harney County, Oregon, AC +/-



- Boundary
- Primary Road
- Pipeline
- Stream
- Transmission Line

Curt Blackburn  
P: 541-573-7206

office@jettblackburn.com

707 Ponderosa Village, Burns, OR 97720

**M** The information contained herein was obtained from sources deemed to be reliable. MapRight Services makes no warranties or guarantees as to the completeness or accuracy thereof.