



**Jett Blackburn
Real Estate Inc.**



Gregush Parcel
Burns, OR

\$85,000

Presented by
United Country Jett Blackburn Real Estate Inc.
707 Ponderosa Village
Burns, OR 97720
541/573-7206 (office) 541/573-5011 (fax)
web site: <http://www.jettblackburn.com>



Legal Desc.: T26S R30E WM Tax Lot 1400
28750 Weaver Springs Rd, Burns OR

Acreage: 150 acres of native range that is covered with sagebrush

Utilities: Power (single & three-phase)

Wells: 1 – well (12" casing, 357' deep)
1 – well (6" casing, 250' deep)

Taxes: \$266.88 (2020/2021)

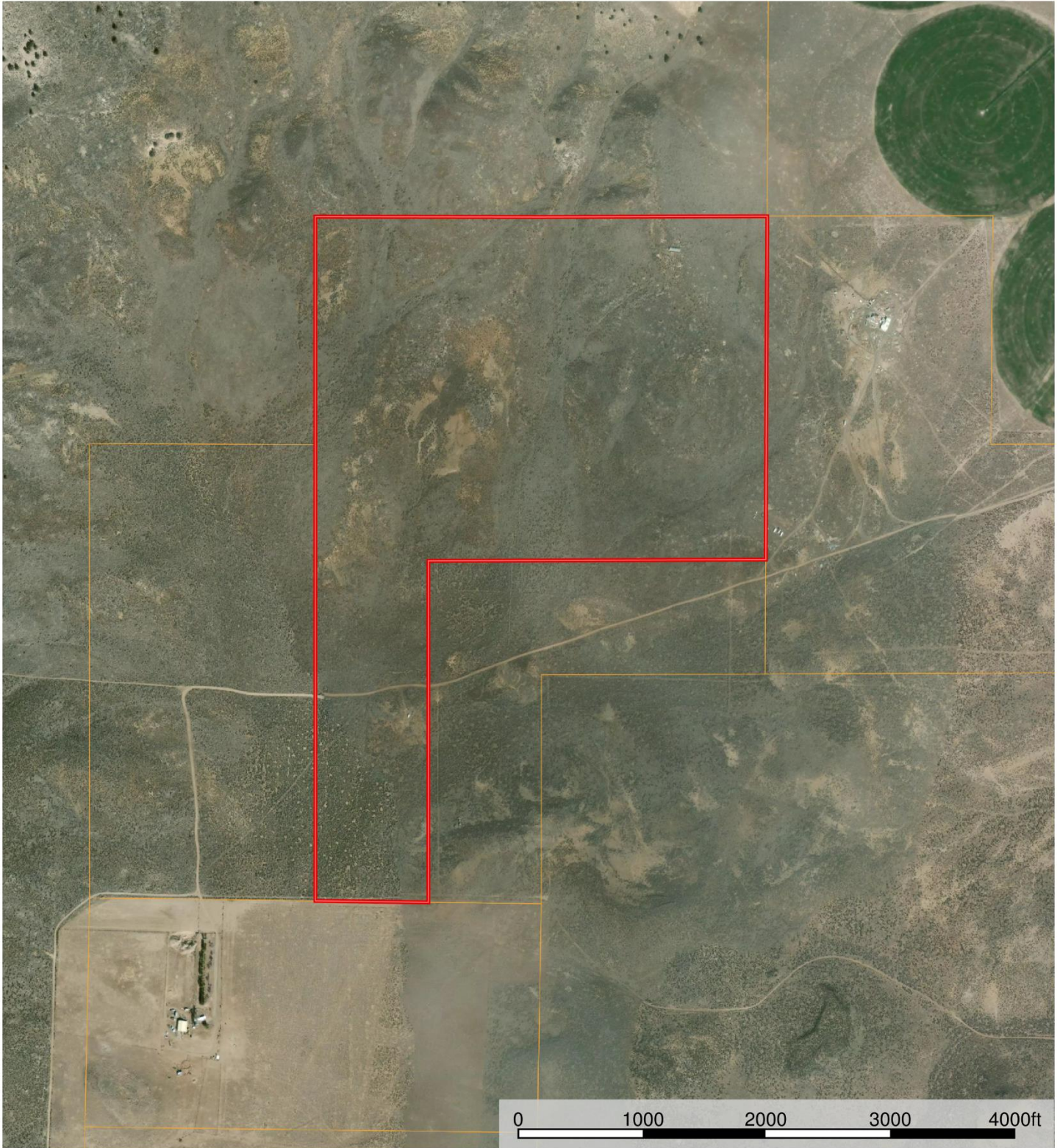
Price: \$85,000.00

Comments: This property has approximately 100' south sloping elevation change overlooking panoramic views of the valley. This is a semi-isolated parcel and may not have legal access on the main road to the property.

The seller and his agent makes these representations in good faith, from personal knowledge and experience. However, the buyer should inspect this property or cause this property to be inspected by knowledgeable persons so that the buyer may purchase without relying upon any representations made by the seller or his agent Also, unless otherwise specified, we, Jett Blackburn Real Estate, Inc. agents, represent the seller on any of our listings.



Gregush 150 ac
Oregon, 150 AC +/-



 Boundary

Curt Blackburn
P: 541-573-7206

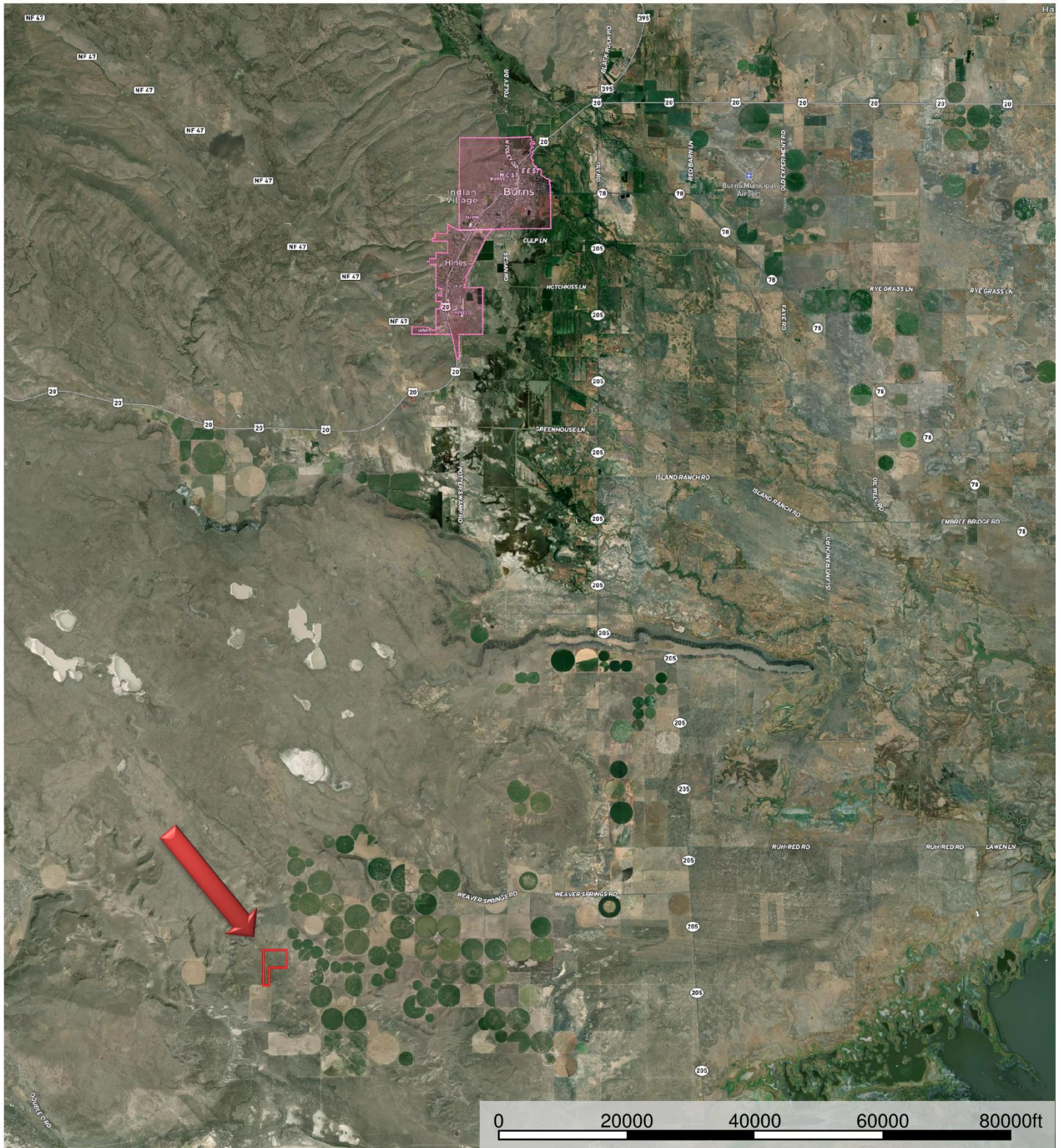
office@jettblackburn.com

707 Ponderosa Village, Burns, OR 97720



The information contained herein was obtained from sources deemed to be reliable. MapFlight Services makes no warranties or guarantees as to the completeness or accuracy thereof.

Gregush 150 ac Oregon, 150 AC +/-



Boundary

Curt Blackburn
P: 541-573-7206

office@jettblackburn.com

707 Ponderosa Village, Burns, OR 97720

M The information contained herein was obtained from sources deemed to be reliable. MapFlight Services makes no warranties or guarantees as to the completeness or accuracy thereof.