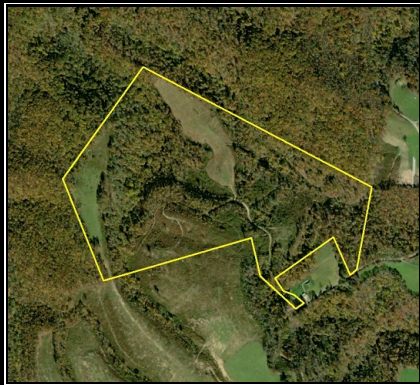
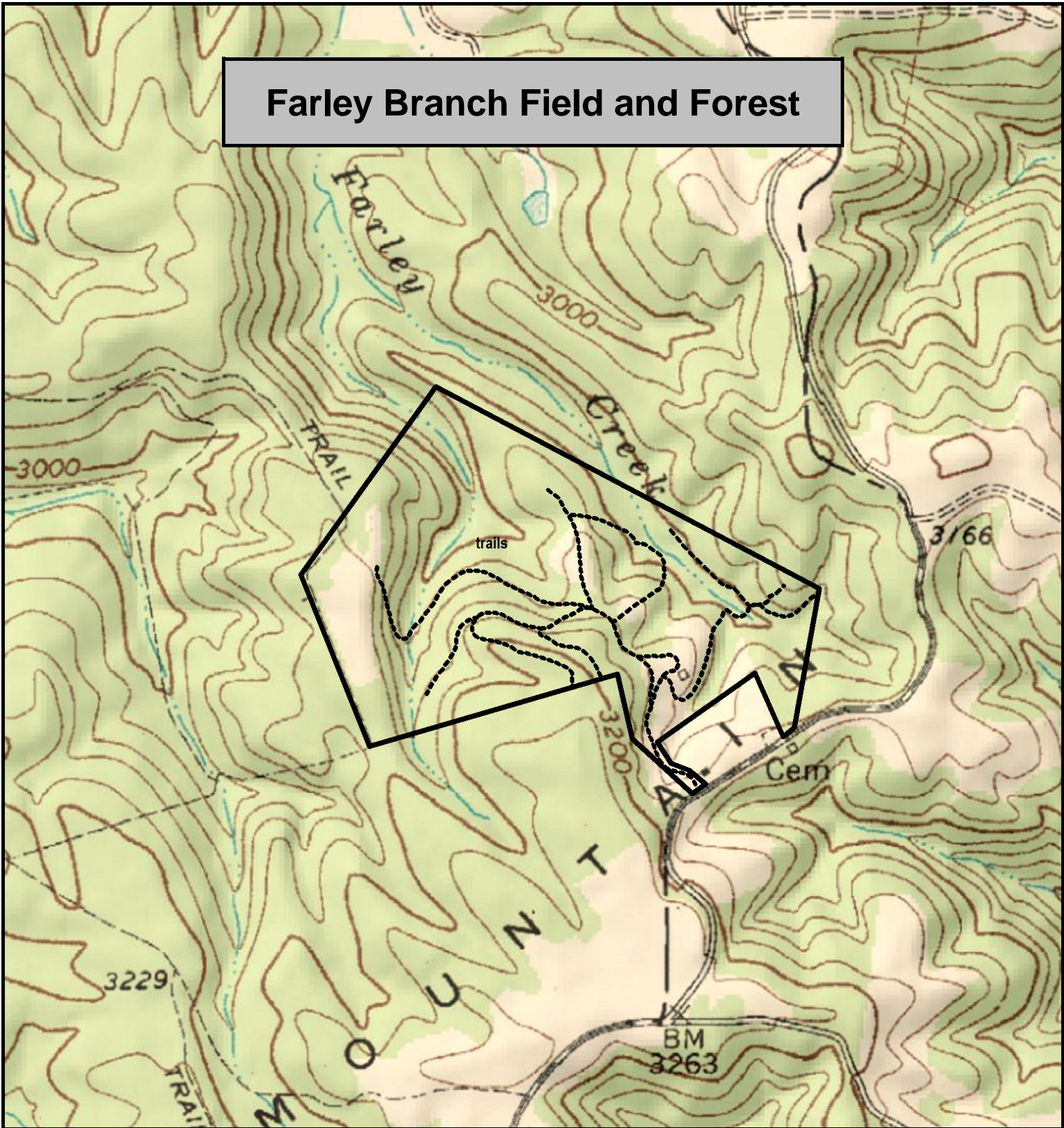


# Farley Branch Field and Forest



Farley Branch, Raleigh & Summers Counties, WV  
TOPOGRAPHIC MAP  
Elevation Range: 3005' - 3101' +/-  
Google Coordinates: LAT 37.609153 (N), LON -81.068860 (W)  
This map is for general location purposes only. Consult a licensed land surveyor for actual boundary location and acreage.

