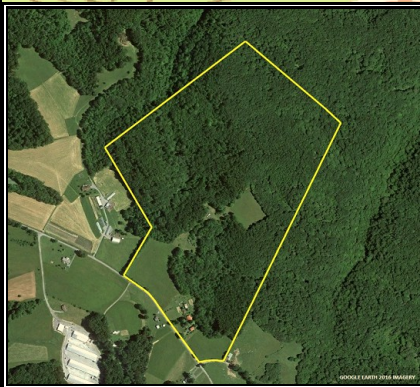
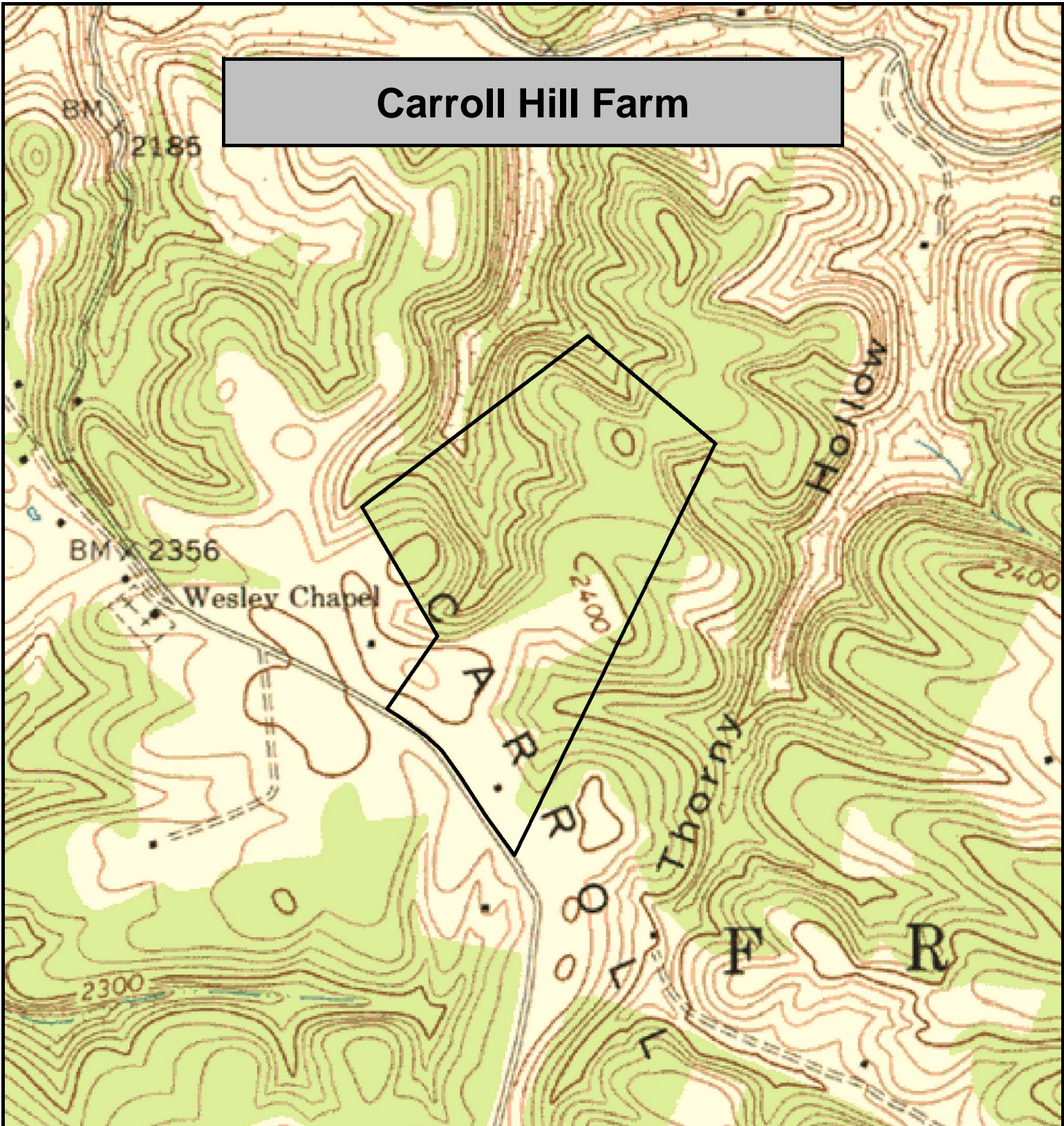


Carroll Hill Farm



Carroll Hill Farm, Greenbrier County, WV
TOPOGRAPHIC MAP
Elevation Range: 2197' - 2419' +/-
Google Coordinates: LAT 37.926146 (N), LON -80.434954 (W)
This map is for general location purposes only. Consult a licensed land surveyor for actual boundary location and acreage.
TAX MAP DEPICTION OF THE PROPERTY IS SHOWN.

