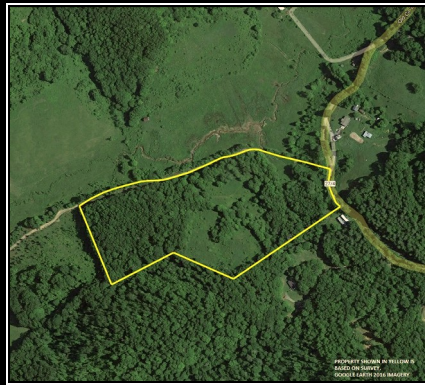
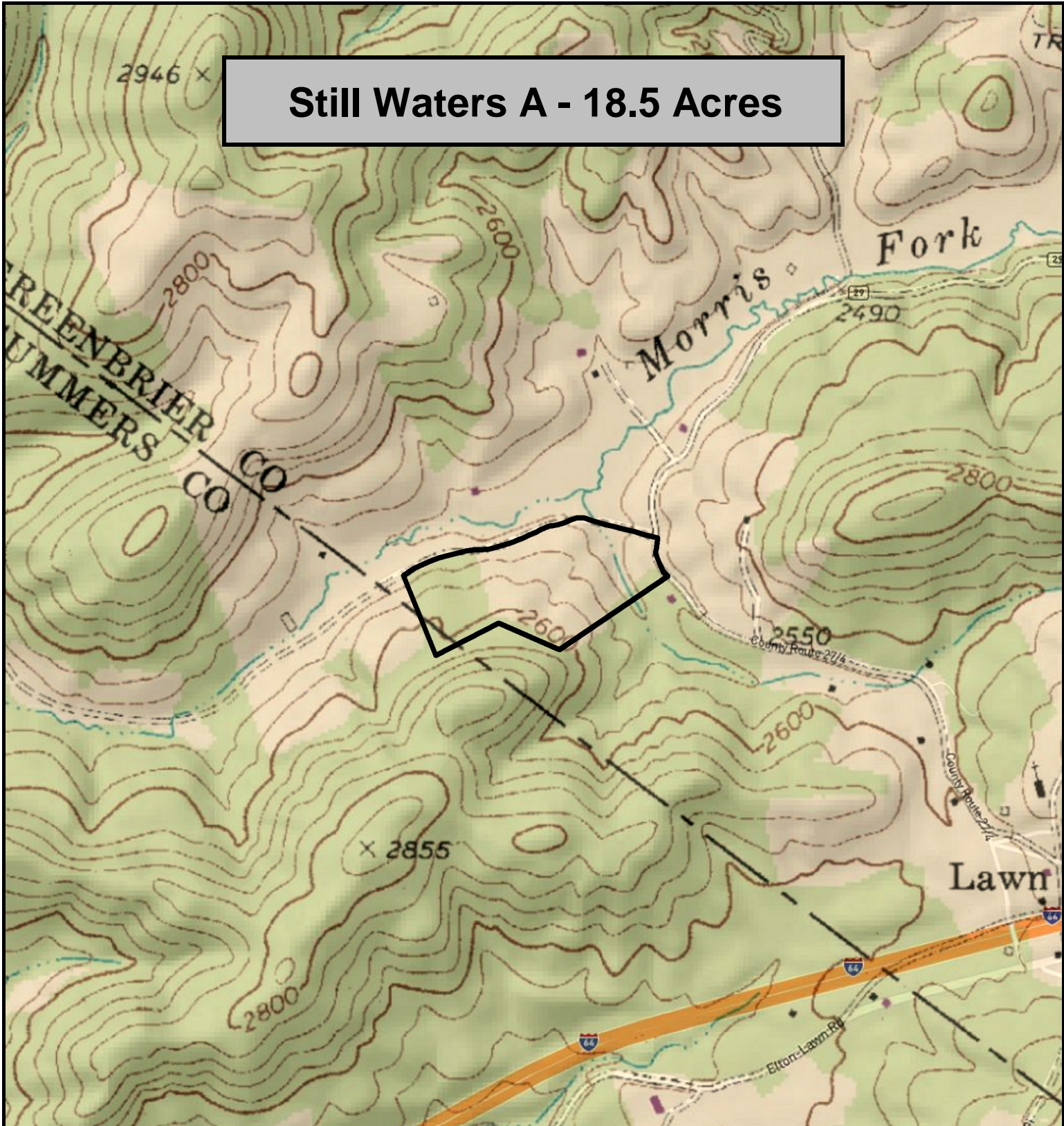


Still Waters A - 18.5 Acres



Still Waters A, Greenbrier County, WV
TOPOGRAPHIC MAP
Elevation Range: 2485' - 2648' +/- ; Google Coordinates:
LAT 37.845979 (N), LON -80.761113 (W)
This map is for general location purposes only. Consult a licensed land surveyor for actual boundary location and acreage.

