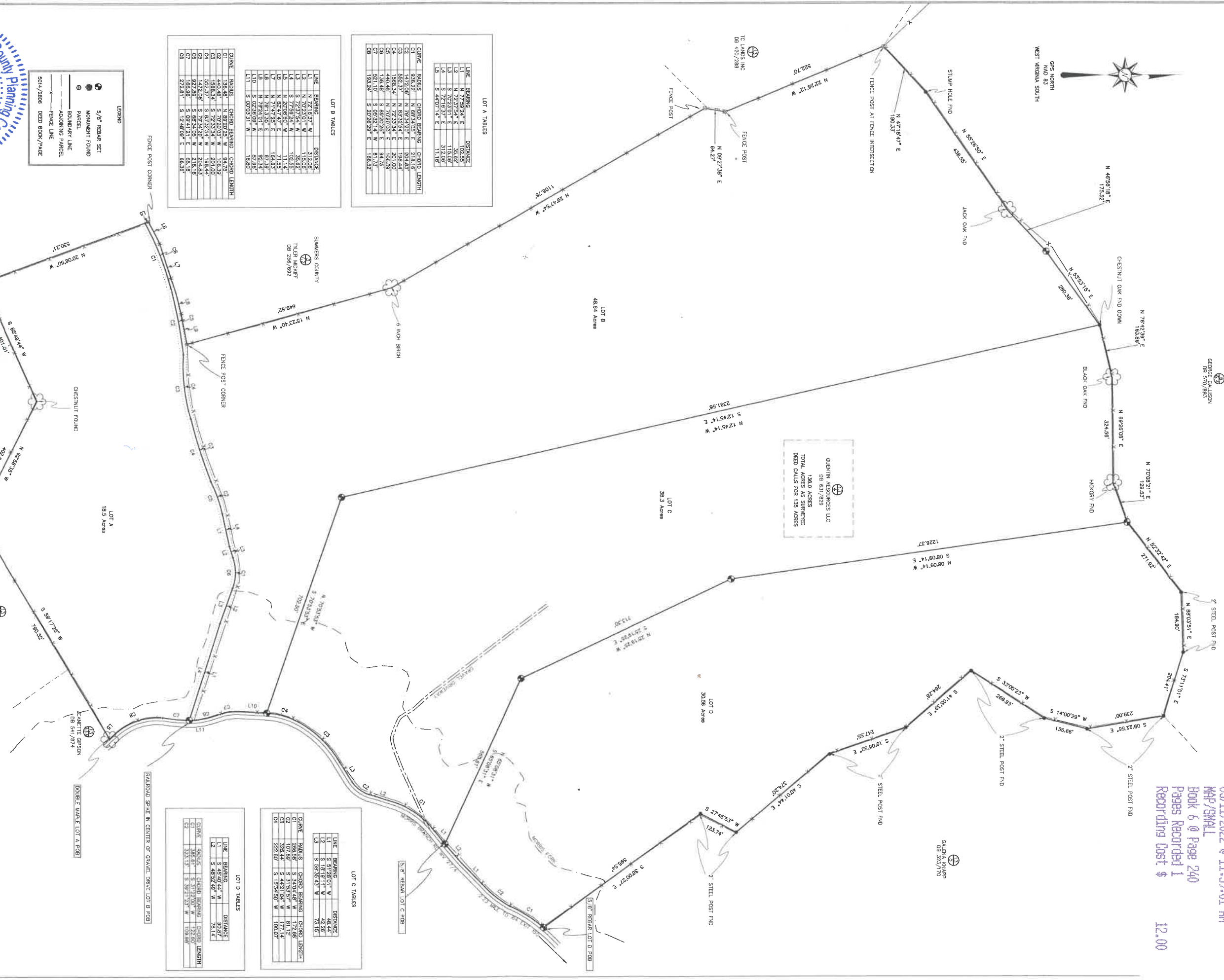
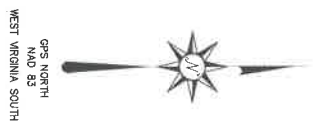


Greenbrier County  
 Robin Loudermilk, Clerk  
 Instrument 29833B  
 05/11/2022 @ 11:39:01 AM  
 MAP/SMALL  
 Book 6 @ Page 240  
 Pages Recorded 1  
 Recording Cost \$ 12.00



LOT A TABLES

LINE	BEARING	DISTANCE
L1	N 77°59'24" E	102.55'
L2	N 72°51'54" E	33.82'
L3	N 72°51'54" E	33.82'
L4	S 72°16'37" E	312.09'
L5	S 44°07'14" E	11.16'

LOT B TABLES

LINE	BEARING	DISTANCE
L1	N 72°16'37" W	312.09'
L2	N 70°23'01" W	115.05'
L3	S 72°51'54" W	33.82'
L4	N 20°06'50" W	11.14'
L5	N 02°47'47" E	71.55'
L6	N 71°47'28" E	164.83'
L7	N 79°24'31" E	92.34'
L8	N 79°24'31" E	92.34'
L9	N 79°24'31" E	92.34'
L10	S 02°36'09" W	87.98'
L11	S 09°03'31" W	18.80'

LOT C TABLES

LINE	BEARING	DISTANCE
L1	S 51°28'01" W	48.44'
L2	S 18°19'11" W	42.26'
L3	S 08°52'49" W	78.14'

LOT D TABLES

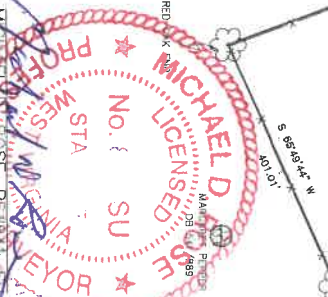
LINE	BEARING	DISTANCE
L1	S 45°10'44" W	90.87'
L2	S 48°52'48" W	78.14'
L3	S 37°21'23" W	100.88'

LOT C TABLES

CURVE	RADIUS	CHORD BEARING	CHORD LENGTH
C1	266.98'	S 34°04'48" W	172.08'
C2	107.88'	S 31°53'57" W	81.12'
C3	225.44'	S 44°21'04" W	172.08'
C4	225.44'	S 13°54'59" W	188.89'

LOT D TABLES

CURVE	RADIUS	CHORD BEARING	CHORD LENGTH
C1	440.48'	S 70°20'03" W	108.39'
C2	1588.34'	S 72°23'34" W	201.00'
C3	508.27'	S 83°33'56" W	208.44'
C4	508.27'	S 83°33'56" W	208.44'
C5	927.88'	S 68°24'03" W	218.18'
C6	188.88'	S 08°41'21" E	68.18'
C7	188.88'	S 12°48'09" E	88.36'
C8	272.88'	S 12°48'09" E	88.36'



RETRACEMENT SURVEY & DIVISION OF PARCEL  
 QUENTIN RESOURCES LLC  
 BLUE SULPHUR DISTRICT  
 GREENBRIER COUNTY WEST VIRGINIA

Surveyed by: Field Crew  
 Drawn by: Daniel Jordan  
 MAY 4, 2022  
 SCALE 1"=125'  
 PARCEL 4 TAX MAP 13  
 Prepared by: opher Land Services, Inc.  
 1195 Hinton Rd  
 White Oak, WV 25989  
 Phone: 304-860-1909; Fax: 866-525-6822