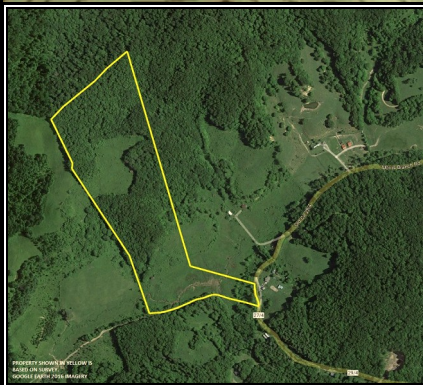
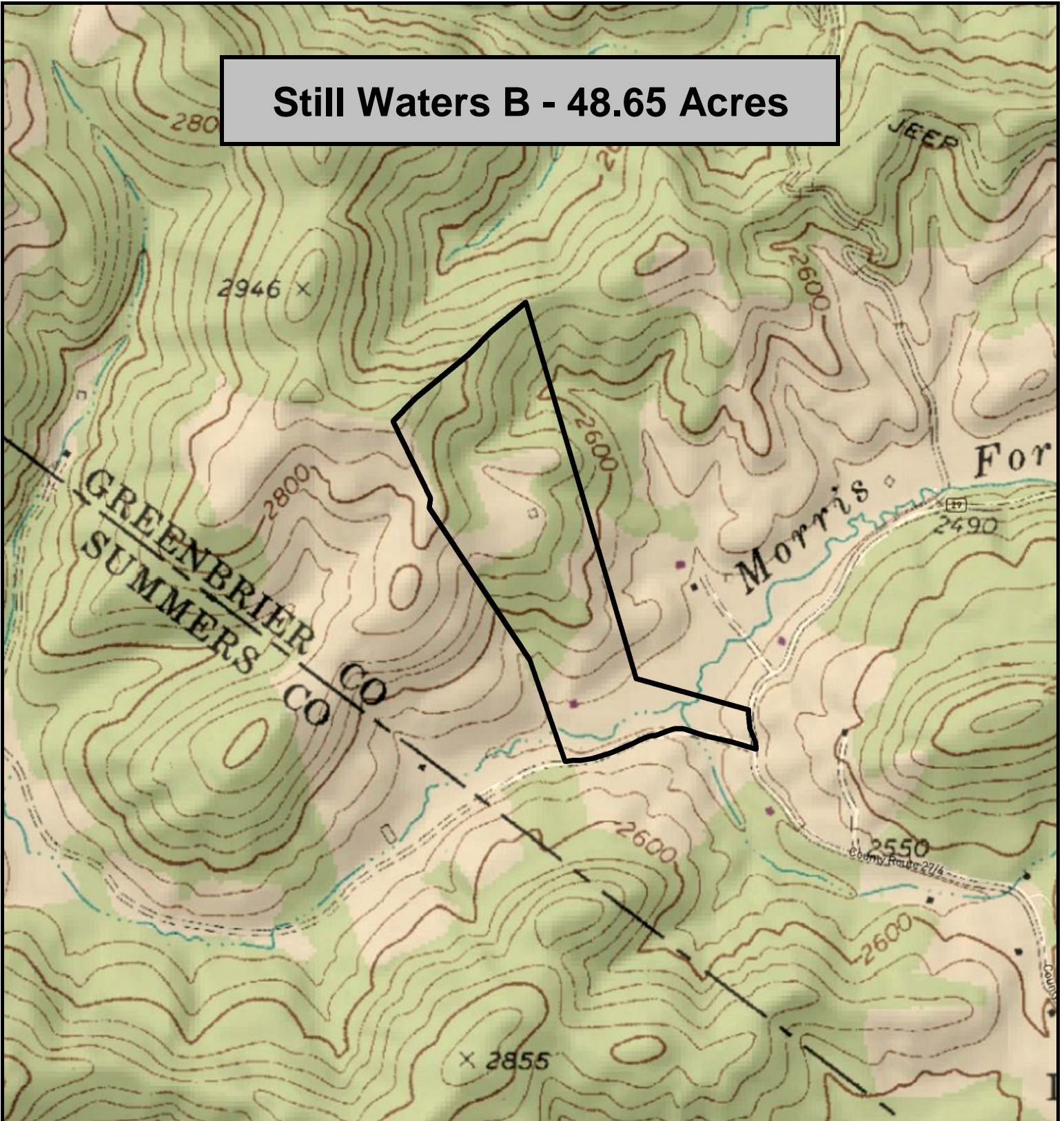


Still Waters B - 48.65 Acres



Still Waters B, Greenbrier County, WV
TOPOGRAPHIC MAP
Elevation Range: 2483' - 2873' +/-; Google Coordinates:
LAT 37.846615 (N), LON -80.761266 (W)
This map is for general location purposes only. Consult a licensed land surveyor for actual boundary location and acreage.

FOR TOPO MAP SCALE 1:9600 1 INCH = 800 FT.

