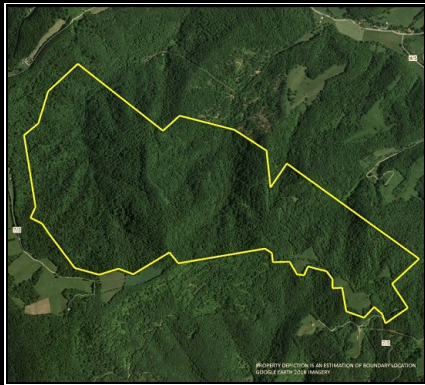
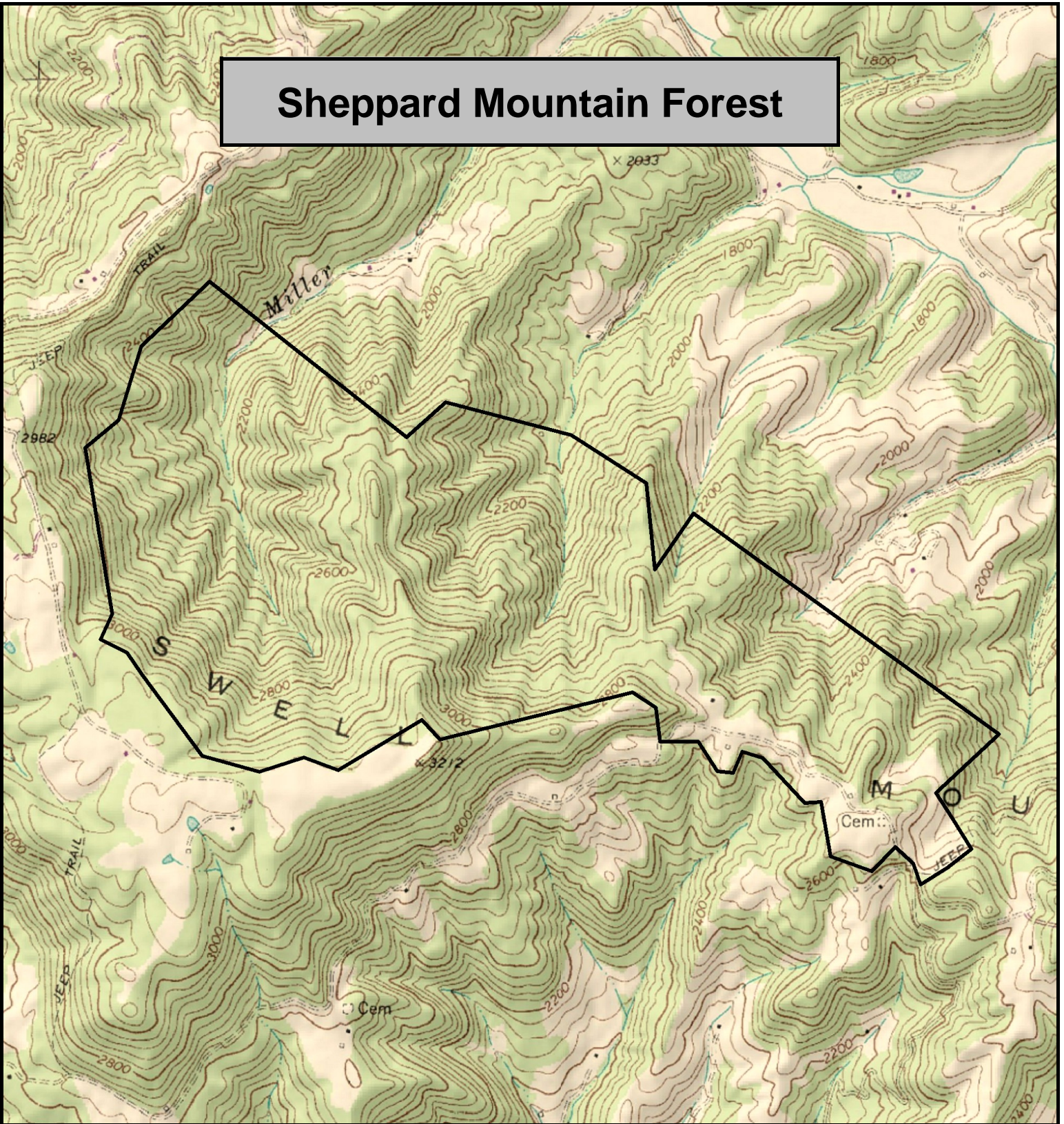


Sheppard Mountain Forest



Sheppard Mountain Forest, Summers County, WV

TOPOGRAPHIC MAP

Elevation Range: 1980' - 3108' +/-

Google Coordinates: LAT 37.769528 (N), LON -80.801290 (W)

This map is for general location purposes only. Consult a licensed land surveyor for actual boundary location and acreage.
PROPERTY DEPICTION IS AN ESTIMATION OF BOUNDARY LOCATION.

FOR TOPO MAP

SCALE 1:18000

1 INCH = 1,500 FT.

