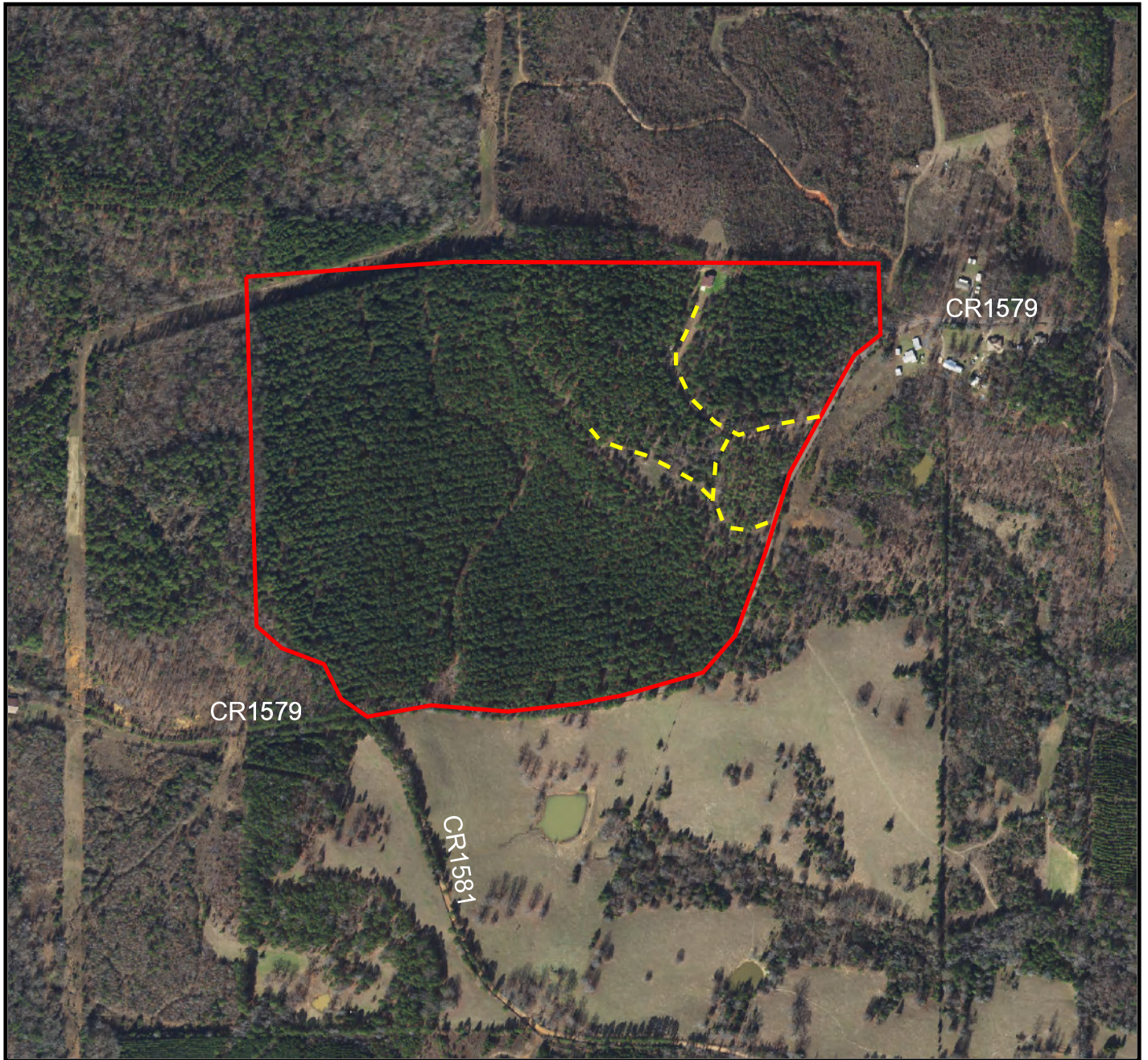



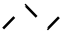




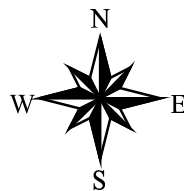
# CR 1579-97



Boundaries are Approximate  
For Location Purposes Only

## Map Legend

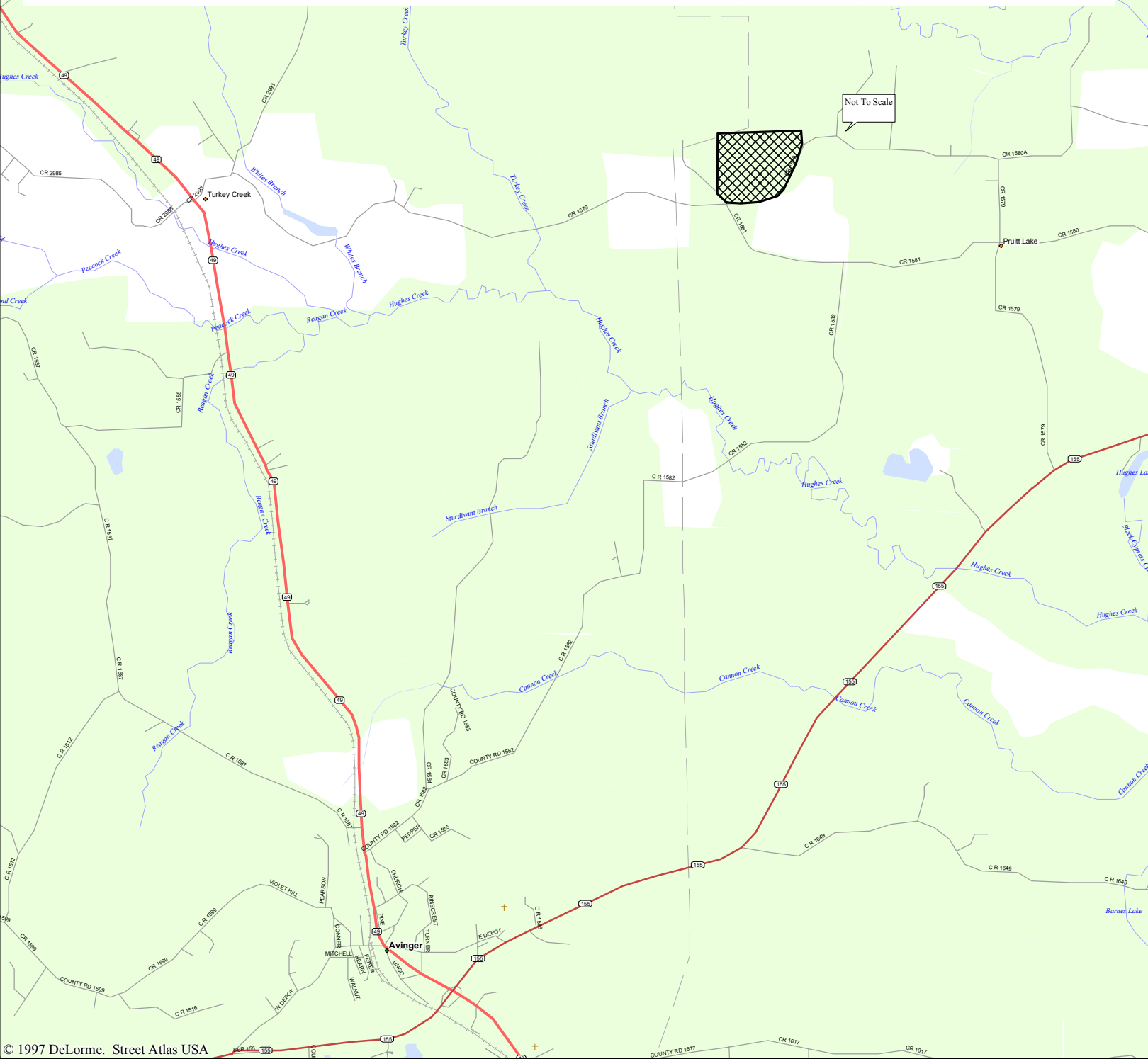
-  Pond
  -  Building
  -  Improved Road
  -  Woods Road
  -  Creek
  -  Highline or Pipeline
- 97.89 Deed Acres



## Landowner Information









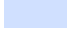
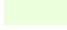


Owner:	
Survey:	<b>J. Clark</b>
Abstract:	<b>194</b>
County:	<b>Cass Co., TX</b>
Date Prepared:	
Prepared by:	<b>Scott Hammett</b>
Source:	<b>2015 DOQQ</b>
Scale:	<b>1"=660'</b>

# Caudle Tract Location Map

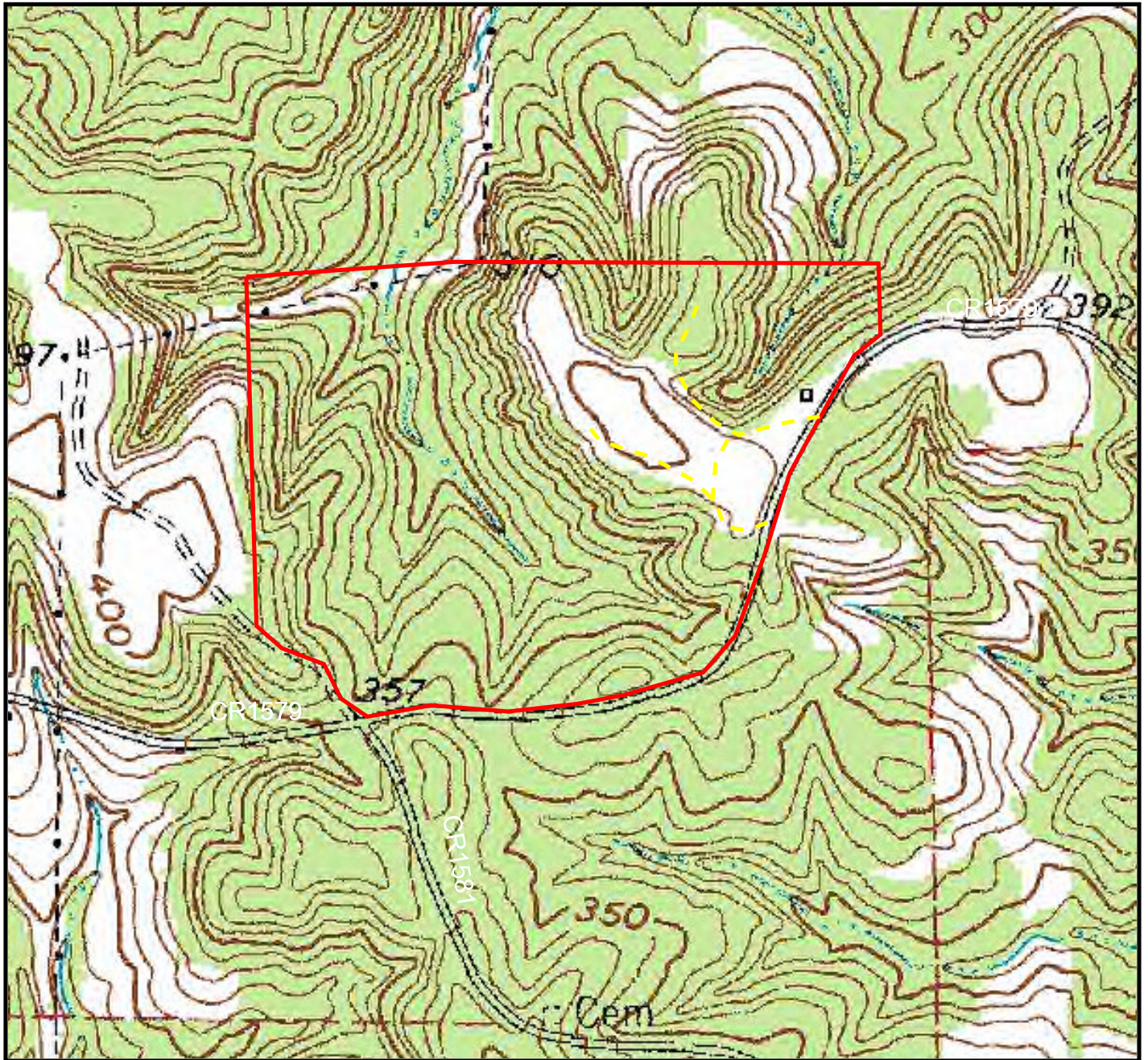


© 1997 DeLorme. Street Atlas USA

Mag 14.00  
 Thu Oct 13 10:07 2011  
 Scale 1:43,750 (at center)  
 5000 Feet  
 1000 Meters

-  Local Road
-  State Route
-  Primary State Route
-  Utility/Pipe
-  Railroad
-  Small Town
-  Locale
-  Cemetery
-  Water
-  Woodland
-  River/Canal
-  Intermittent River

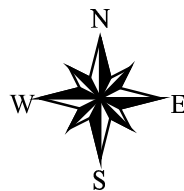
# CR 1579-97 Topographic Map



Boundaries are Approximate  
For Location Purposes Only

### Map Legend

- Pond
- Building
- Improved Road
- Woods Road
- Creek
- Highline or Pipeline

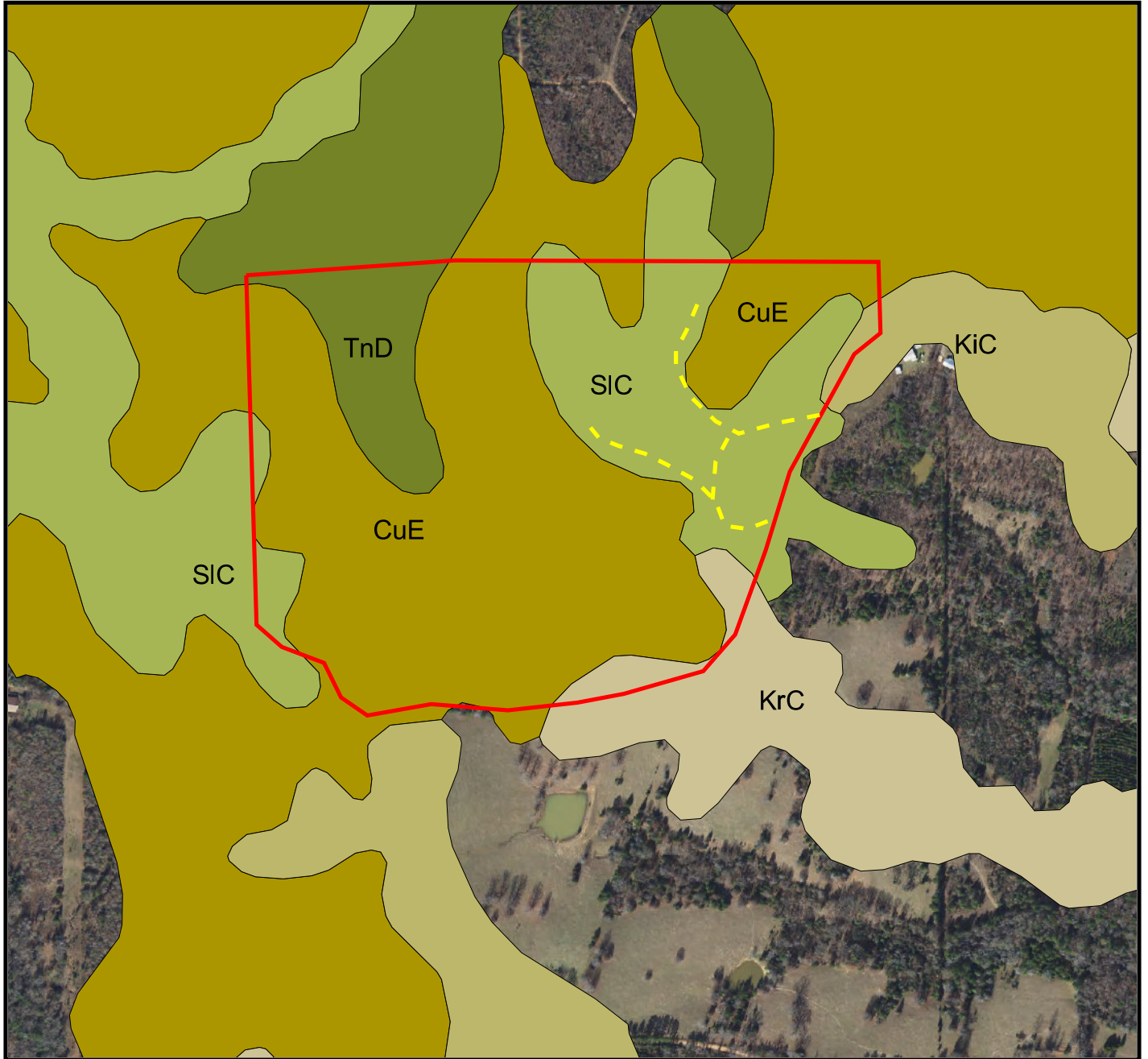


### Landowner Information

Owner:	
Survey:	<b>J. Clark</b>
Abstract:	<b>194</b>
County:	<b>Cass Co., TX</b>
Date Prepared:	
Prepared by:	<b>Scott Hammett</b>
Source:	<b>USGS Topo Map</b>
Scale:	<b>1"=660'</b>

# CR 1579-97

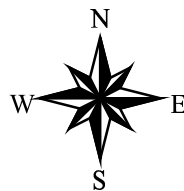
## Soils Map



Boundaries are Approximate  
For Location Purposes Only

### Map Legend

Pond	Soilmu_a_tx616.shp
Building	
Improved Road	CuE Cuthbert
Woods Road	KiC Kirvin
Creek	KrC Kirvin
Highline or Pipeline	SIC Sailles
	TnD Tenaha



### Landowner Information

Owner:	
Survey:	<b>J. Clark</b>
Abstract:	<b>194</b>
County:	<b>Cass Co., TX</b>
Date Prepared:	
Prepared by:	<b>Scott Hammett</b>
Source:	<b>NRCS Soils Map</b>
Scale:	<b>1"=660'</b>

## CR 1579-97 Tract Legal Description

All that certain lot and parcel of land lying and being situated in the Jason Clark Survey, A-194, Cass County, Texas, consisting of 97.89 acres of land and more particularly described as follows, to-wit:

BEGINNING at an iron rod for Northwest corner Jason Clark Survey, Northwest corner this described tract 28" Post Oak marked "X", East 7.6 feet 5 inch Black Jack, North 17° East, 11.4 feet;

THENCE: North 87° 29' 24" East, 893.54 feet to an iron rod for Southeast corner Isaac Renfro Survey 10" Red Oak marked "X", North 72° West 15.3 feet 12 inch Hickory marked "X", North 45° East, 17.4 feet;

THENCE: South 88° 03' 15" East, 1787.05 feet to an iron rod for Northeast corner 8" Sweetgum marked "X", South 41° West, 7.5 feet 10" Sweetgum marked "X" South 62° East, 17.9 feet;

THENCE: South 309.70 feet to an iron rod in center of county road, 16" Sweetgum marked "X", North 57° West, 37.9 feet 12 in Post Oak marked "X", North 25° West, 30.3 feet;

THENCE: With the meanderings of county road:

South 53° 47' 27" West, 136.28 feet to an iron pin;

South 30° 19' West, 579.20 feet to an iron pin;

South 17° 50' West, 359.70 feet to an iron pin;

South 21° 26' West, 379.50 feet to an iron pin;

South 42° 07' West, 210.00 feet to an iron pin;

South 75° 57' West, 348.00 feet to an iron pin;

South 80° 29' West, 194.90 feet to an iron pin;

South 84° 46' West, 298.70 feet to an iron pin;

North 83° 15' West, 325.90 feet to an iron pin;

South 81° 29' West, 275.70 feet to an iron rod in road intersection 12" Pine marked "X", North 09° West 21.6 feet 6 inch Post Oak marked "X", North 41° East, 21.7 feet;

THENCE: With meanderings of Private Road;

North 53° 46' West, 137.20 feet to an iron pin;

North 24° 16' West, 163.5 feet to an iron pin;

North 66° 16' West, 188.6 feet to an iron pin;

North 48° 13' West, 154.0 feet to an iron rod for Southwest corner of this tract, 10" Hickory marked "X", North 76° East, 10.4 feet 20 inch Pine marked "X", North 12° East, 24.8 feet;

THENCE: North 00° 04' 59" East, 1501.00 feet to Place of Beginning.

# Forestland Productivity

Marion and Cass Counties, Texas

Map symbol and soil name	Potential productivity			Trees to manage
	Common trees	Site index	Volume of wood fiber	
			Cu ft/ac	
<b>AaB:</b>				
ALAZAN	Loblolly pine	95	143	Loblolly pine, Slash pine, Sweetgum
	Shortleaf pine	---	0	
	Southern red oak	---	0	
	Sweetgum	---	0	
<b>AsA:</b>				
ASHFORD	Green ash	---	0	Green ash, Green ash
	Post oak	---	0	
	Southern red oak	---	0	
	Water oak	70	57	
	Willow oak	---	0	
<b>BaB:</b>				
BERNALDO	Loblolly pine	94	143	Loblolly pine, Sweetgum
	Shortleaf pine	84	143	
	Southern red oak	---	0	
	Sweetgum	---	0	
<b>BaD:</b>				
BERNALDO	Loblolly pine	84	143	Loblolly pine, Sweetgum
	Shortleaf pine	---	0	
	Southern red oak	94	143	
	Sweetgum	---	0	
<b>Bg:</b>				
BIBB	Atlantic white cedar	---	0	Eastern cottonwood, Loblolly pine, Sweetgum, Tuliptree
	Blackgum	---	0	
	Loblolly pine	100	157	
	Sweetgum	90	100	
	Tuliptree	---	0	
	Water oak	90	86	
<b>BoC:</b>				
BOWIE	Loblolly pine	86	129	Loblolly pine
	Shortleaf pine	80	129	
<b>BrB:</b>				
BRILEY	Loblolly pine	80	114	Loblolly pine, Slash pine
	Shortleaf pine	70	114	
	Slash pine	---	0	
<b>CrF:</b>				
CUTHBERT	Loblolly pine	84	114	Loblolly pine
	Shortleaf pine	72	114	

# Forestland Productivity

Marion and Cass Counties, Texas

Map symbol and soil name	Potential productivity			Trees to manage
	Common trees	Site index	Volume of wood fiber	
			Cu ft/ac	
CrF:				
REDSPRINGS	Loblolly pine	79	114	Loblolly pine
	Shortleaf pine	69	114	
CrG:				
CUTHBERT	Loblolly pine	80	114	Loblolly pine
	Shortleaf pine	75	114	
REDSPRINGS	Eastern redcedar	69	114	Loblolly pine
	Eastern redcedar	79	114	
CtE:				
CUTHBERT	Loblolly pine	84	114	Loblolly pine
	Shortleaf pine	72	114	
CuE:				
CUTHBERT	Loblolly pine	84	114	Loblolly pine
	Shortleaf pine	72	114	
Cy:				
CYPRESS	Baldcypress	78	43	Baldcypress
DaB:				
DARCO	Loblolly pine	81	114	Loblolly pine, Shortleaf pine
	Shortleaf pine	76	114	
DaE:				
DARCO	Loblolly pine	81	114	Loblolly pine, Shortleaf pine
	Shortleaf pine	76	114	
DAM:				
DAM	---	---	---	---
DuA:				
DUFFERN	Loblolly pine	75	100	Loblolly pine, Slash pine
	Shortleaf pine	65	100	
EeB:				
EASTWOOD	Hickory	---	0	Loblolly pine
	Loblolly pine	93	143	
	Shortleaf pine	---	0	
	Southern red oak	---	0	
	Sweetgum	---	0	

# Forestland Productivity

Marion and Cass Counties, Texas

Map symbol and soil name	Potential productivity			Trees to manage
	Common trees	Site index	Volume of wood fiber	
			Cu ft/ac	
<b>EeD:</b>				
EASTWOOD	Hickory	---	0	Loblolly pine
	Loblolly pine	86	129	
	Shortleaf pine	77	129	
	Southern red oak	---	0	
	Sweetgum	---	0	
<b>EIA:</b>				
ELROSE	Loblolly pine	92	143	Loblolly pine, Shortleaf pine
	Shortleaf pine	85	143	
	Southern red oak	---	0	
	Sweetgum	90	100	
<b>EtA:</b>				
ERNO	Loblolly pine	100	157	Loblolly pine
	Shortleaf pine	90	143	
	Southern red oak	90	72	
	Sweetgum	100	143	
THAGE	Loblolly pine	90	129	Loblolly pine, Sweetgum, Water oak
	Shortleaf pine	85	143	
	Sweetgum	90	100	
	Water oak	90	86	
<b>EyB:</b>				
EYLAU	Loblolly pine	73	100	Loblolly pine, Slash pine
	Shortleaf pine	71	114	
	Slash pine	77	143	
	Southern red oak	---	0	
<b>GaA:</b>				
GALLIME	Loblolly pine	90	129	Loblolly pine, Sweetgum
	Shortleaf pine	80	129	
	Southern red oak	---	0	
	Sweetgum	---	0	
<b>GaC:</b>				
GALLIME	Loblolly pine	90	129	Loblolly pine, Sweetgum
	Shortleaf pine	80	129	
	Southern red oak	---	0	
	Sweetgum	---	0	



# Forestland Productivity

Marion and Cass Counties, Texas

Map symbol and soil name	Potential productivity			Trees to manage
	Common trees	Site index	Volume of wood fiber	
			Cu ft/ac	
<b>GaC:</b>				
<b>GUYTON</b>	Cherrybark oak	---	0	Green ash, Loblolly pine, Slash pine, Water oak
	Green ash	---	0	
	Loblolly pine	85	114	
	Slash pine	90	157	
	Sweetgum	---	0	
	Water oak	---	0	
	Willow oak	78	72	
<b>Gf:</b>				
<b>GLADEWATER</b>	Water oak	85	86	Water oak
	Willow oak	85	86	
<b>HaA:</b>				
<b>HAINESVILLE</b>	Loblolly pine	96	143	Loblolly pine, Shortleaf pine
	Shortleaf pine	88	143	
<b>Hb:</b>				
<b>HANNAHATCHEE</b>	Cherrybark oak	---	0	American sycamore, Black walnut, Loblolly pine, Sweetgum
	Loblolly pine	102	157	
	Sweetgum	100	143	
<b>lu:</b>				
<b>IULUS</b>	Sweetgum	100	143	Loblolly pine, Sweetgum
	Water oak	100	100	
<b>KiC:</b>				
<b>KIRVIN</b>	Loblolly pine	85	114	Loblolly pine, Slash pine
	Shortleaf pine	75	114	
<b>KiD:</b>				
<b>KIRVIN</b>	Loblolly pine	85	114	Loblolly pine, Slash pine
	Shortleaf pine	75	114	
<b>KrC:</b>				
<b>KIRVIN</b>	Loblolly pine	83	114	Loblolly pine
	Shortleaf pine	72	114	
<b>KuA:</b>				
<b>KULLIT</b>	Loblolly pine	90	129	Cherrybark oak, Loblolly pine, Sweetgum
	Southern red oak	---	0	
	Sweetgum	---	0	
	White oak	---	0	

# Forestland Productivity

Marion and Cass Counties, Texas

Map symbol and soil name	Potential productivity			Trees to manage
	Common trees	Site index	Volume of wood fiber	
			Cu ft/ac	
<b>LcB:</b>				
LATCH	Loblolly pine	98	143	Loblolly pine, Southern red oak, Water oak
	Post oak	---	0	
	Southern red oak	---	0	
	Sweetgum	---	0	
	Water oak	---	0	
	Willow oak	---	0	
	Winged elm	---	0	
<b>LmB:</b>				
LATCH	Loblolly pine	98	143	Loblolly pine, Southern red oak, Water oak
	Post oak	---	0	
	Southern red oak	---	0	
	Sweetgum	---	0	
	Water oak	---	0	
	Willow oak	---	0	
	Winged elm	---	0	
MOLLVILLE	Loblolly pine	82	114	Loblolly pine, Sweetgum, Water oak
	Sweetgum	80	86	
	Water oak	80	72	
	Willow oak	80	72	
<b>LtB:</b>				
LATEX	Hickory	---	0	Loblolly pine
	Loblolly pine	91	129	
	Shortleaf pine	86	143	
	Slash pine	100	186	
	Southern red oak	95	72	
	Sweetgum	95	114	
<b>LuC:</b>				
LILBERT	Loblolly pine	88	129	Loblolly pine, Slash pine
	Longleaf pine	70	86	
	Shortleaf pine	74	114	
	Southern red oak	---	0	
	Sweetgum	---	0	
<b>Mf:</b>				
MANTACHIE	Cherrybark oak	100	143	Cherrybark oak, Eastern cottonwood, Green ash, Loblolly pine, Sweetgum, Tuliptree
	Eastern cottonwood	90	100	
	Green ash	80	57	
	Loblolly pine	98	143	
	Sweetgum	95	114	
	Tuliptree	95	100	

# Forestland Productivity

Marion and Cass Counties, Texas

Map symbol and soil name	Potential productivity			Trees to manage
	Common trees	Site index	Volume of wood fiber	
Cu ft/ac				
<b>MiA:</b>				
Metcalf	Loblolly pine	92	143	Cherrybark oak, Loblolly pine, Shortleaf pine, Shumard's oak
	Shortleaf pine	74	114	
	Southern red oak	---	0	
	Sweetgum	---	0	
	White oak	---	0	
<b>MkA:</b>				
MOLLVILLE	Loblolly pine	82	114	Loblolly pine, Sweetgum, Water oak
	Sweetgum	80	86	
	Water oak	80	72	
	Willow oak	80	72	
KILDARE	Loblolly pine	90	129	Loblolly pine, Sweetgum, Water oak
	Shortleaf pine	85	143	
	Sweetgum	90	100	
	Water oak	90	86	
<b>MIA:</b>				
MOLLVILLE	Loblolly pine	82	114	Loblolly pine, Sweetgum, Water oak
	Sweetgum	80	86	
	Water oak	80	72	
	Willow oak	80	72	
<b>Mm:</b>				
MOOREVILLE	Cherrybark oak	100	143	Cherrybark oak, Eastern cottonwood, Green ash, Loblolly pine, Sweetgum, Tuliptree
	Eastern cottonwood	105	143	
	Green ash	80	57	
	Loblolly pine	95	143	
	Sweetgum	100	143	
	Tuliptree	100	114	
MANTACHIE	Cherrybark oak	100	143	Cherrybark oak, Eastern cottonwood, Green ash, Loblolly pine, Sweetgum, Tuliptree
	Eastern cottonwood	90	100	
	Green ash	80	57	
	Loblolly pine	98	143	
	Sweetgum	95	114	
	Tuliptree	95	100	
<b>RgC:</b>				
REDSPRINGS	Loblolly pine	79	114	Loblolly pine
	Shortleaf pine	69	114	

# Forestland Productivity

Marion and Cass Counties, Texas

Map symbol and soil name	Potential productivity			Trees to manage
	Common trees	Site index	Volume of wood fiber	
			Cu ft/ac	
<b>RnB:</b>				
RENTZEL	Loblolly pine	89	129	Loblolly pine
	Shortleaf pine	76	114	
	Sweetgum	---	0	
<b>SaC:</b>				
SACUL	---	---	---	---
<b>SIC:</b>				
Sailes	Loblolly pine	95	143	Loblolly pine
	Longleaf pine	90	129	
	Shortleaf pine	85	143	
<b>Sm:</b>				
SARDIS	---	---	---	---
MANCO	Sweetgum	92	114	Cherrybark oak, Green ash
	Water oak	90	86	
	Willow oak	90	86	
<b>So:</b>				
SOCAGEE	Overcup oak	84	0	---
	Sweetgum	90	100	
	Water oak	82	72	
	Willow oak	82	72	
<b>SPY:</b>				
SPELLWAY	---	---	---	---
<b>TnB:</b>				
TENAHA	Loblolly pine	87	129	Loblolly pine
	Shortleaf pine	77	129	
<b>TnD:</b>				
TENAHA	Loblolly pine	87	129	Loblolly pine
	Shortleaf pine	77	129	
<b>Ud:</b>				
UDORTMENTS, GRAVELLY	---	---	---	---
<b>W:</b>				
WATER	---	---	---	---

# Forestland Productivity

Marion and Cass Counties, Texas

Map symbol and soil name	Potential productivity			Trees to manage
	Common trees	Site index	Volume of wood fiber	
			Cu ft/ac	
WrA: WRIGHTSVILLE	Sweetgum	70	57	Loblolly pine, Shortleaf pine,
	Water oak	70	57	Sweetgum, Water oak, Willow oak

## Forestland Productivity

This table can help forest owners or managers plan the use of soils for wood crops. It shows the potential productivity of the soils for wood crops.

Potential productivity of merchantable or common trees on a soil is expressed as a site index and as a volume number. The site index is the average height, in feet, that dominant and codominant trees of a given species attain in a specified number of years. The site index applies to fully stocked, even-aged, unmanaged stands. Commonly grown trees are those that forest managers generally favor in intermediate or improvement cuttings. They are selected on the basis of growth rate, quality, value, and marketability. More detailed information regarding site index is available in the "National Forestry Manual," which is available in local offices of the Natural Resources Conservation Service or on the Internet.

The volume of wood fiber, a number, is the yield likely to be produced by the most important tree species. This number, expressed as cubic feet per acre per year and calculated at the age of culmination of the mean annual increment (CMAI), indicates the amount of fiber produced in a fully stocked, even-aged, unmanaged stand.

Trees to manage are those that are preferred for planting, seeding, or natural regeneration and those that remain in the stand after thinning or partial harvest.

### Reference:

United States Department of Agriculture, Natural Resources Conservation Service. National forestry manual.  
(<http://soils.usda.gov/technical/nfhandbook/>)