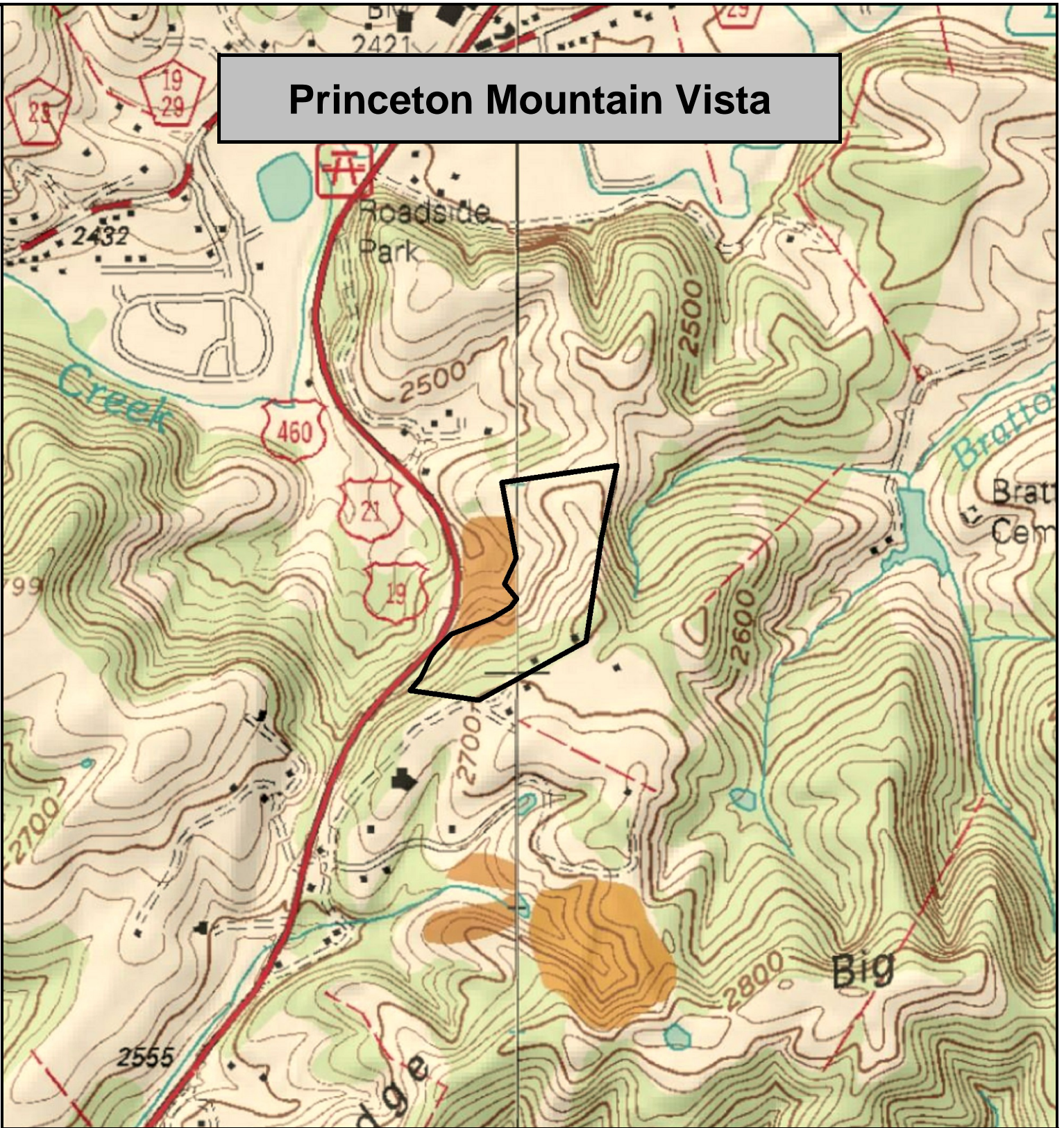


Princeton Mountain Vista



Princeton Mountain Vista, Mercer County, WV
TOPOGRAPHIC MAP

Elevation Range: 2560' - 2703' +/-

Google Coordinates: LAT 37.333015 (N), LON -81.125682 (W)

This map is for general location purposes only.

Consult a licensed land surveyor for actual boundary location and acreage.

FOR TOPO MAP

SCALE 1:9600

1 INCH = 800 FT.

