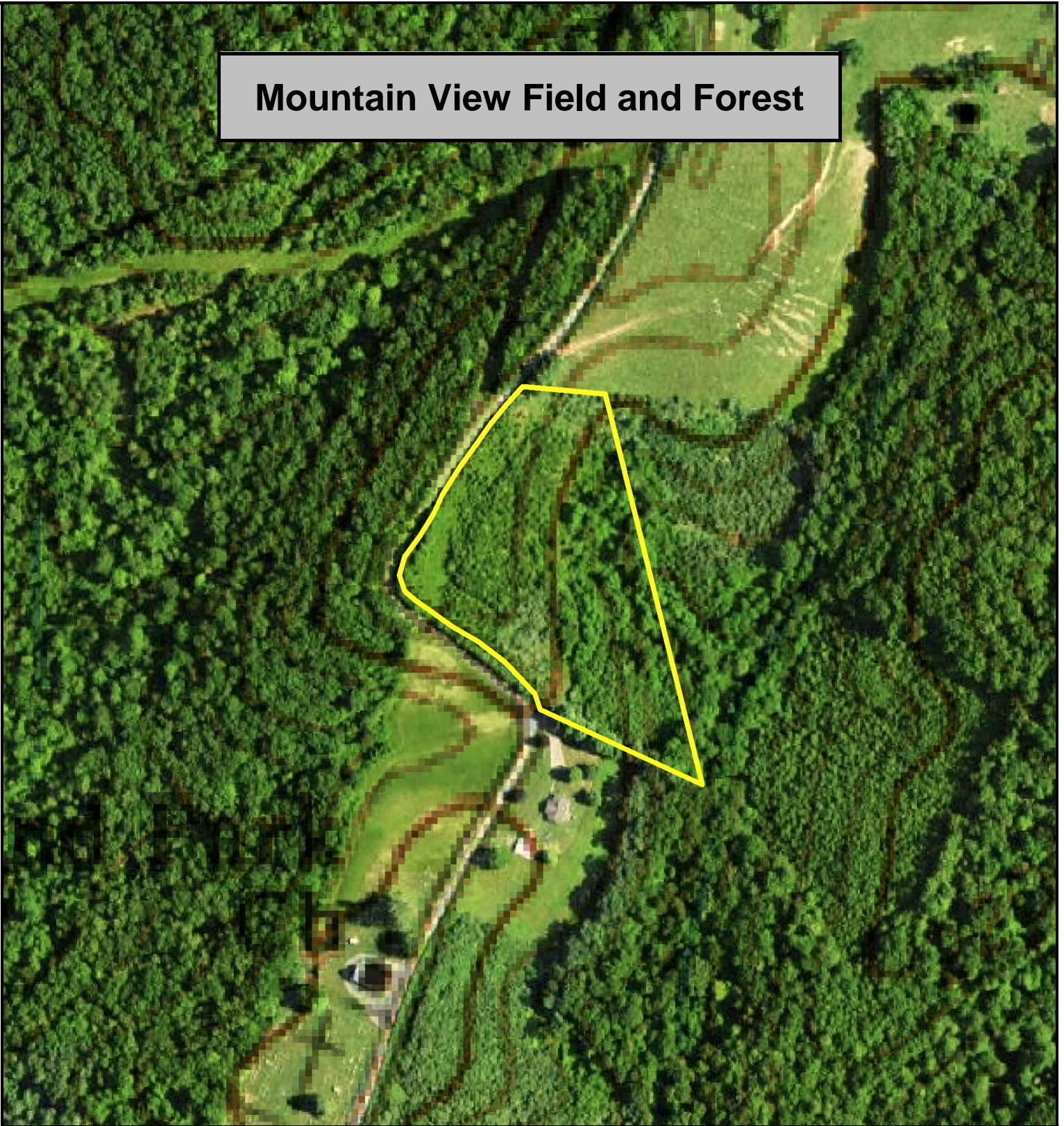


# Mountain View Field and Forest



Mountain View Field and Forest, Monroe County, WV  
AERIAL TOPOGRAPHIC MAP  
Elevation Range: 2133' - 2230' +/-  
Google Coordinates: LAT 37.674200 (N), LON -80.430815 (W)  
This map is for general location purposes only.  
Consult a licensed land surveyor for actual boundary location and acreage.

FOR TOPO MAP

SCALE 1:3000

1 INCH = 250 FT.

