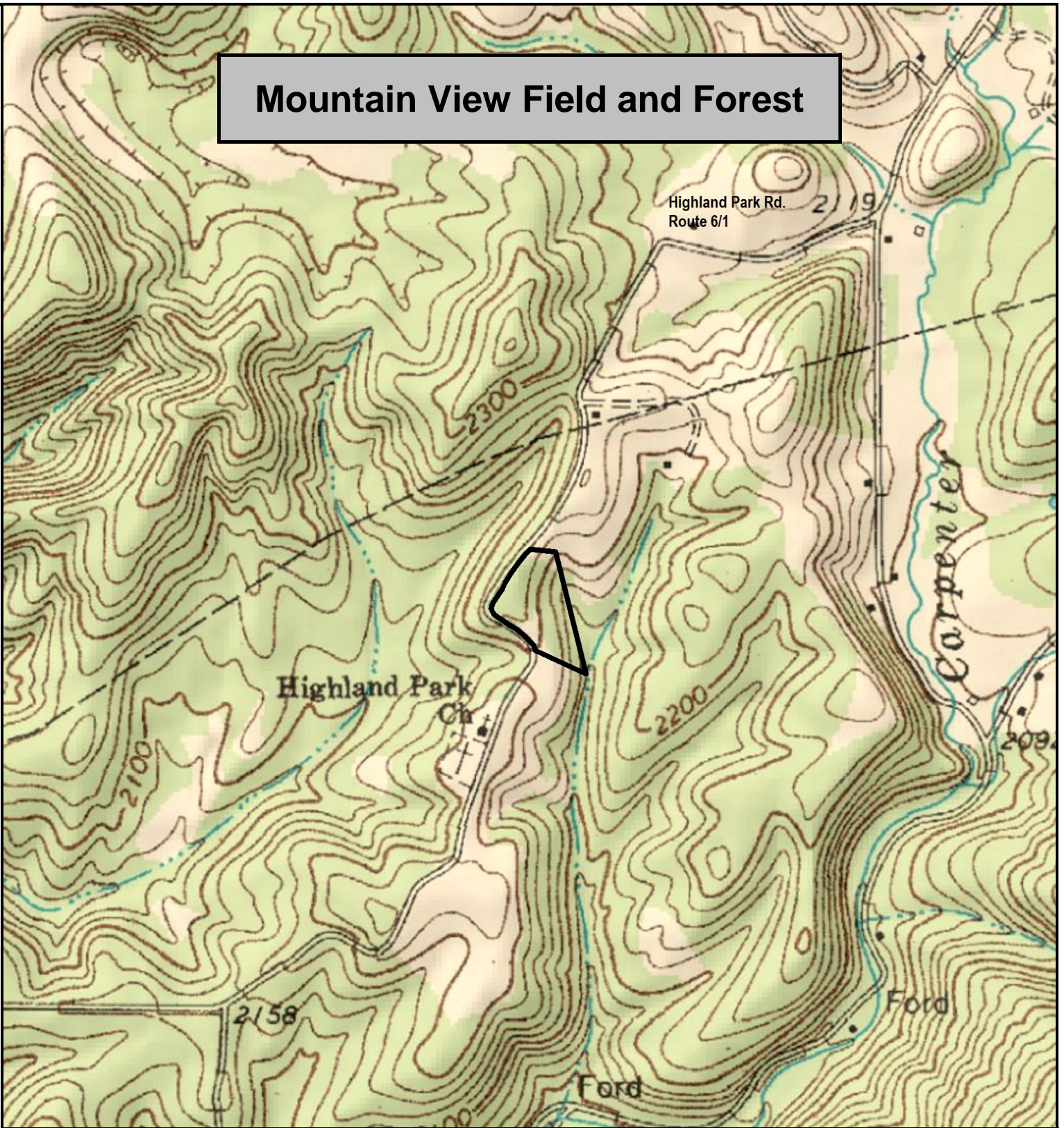


Mountain View Field and Forest



Mountain View Field and Forest, Monroe County, WV
TOPOGRAPHIC MAP
Elevation Range: 2133' - 2230' +/-
Google Coordinates: LAT 37.674200 (N), LON -80.430815 (W)
This map is for general location purposes only.
Consult a licensed land surveyor for actual boundary location and acreage.

