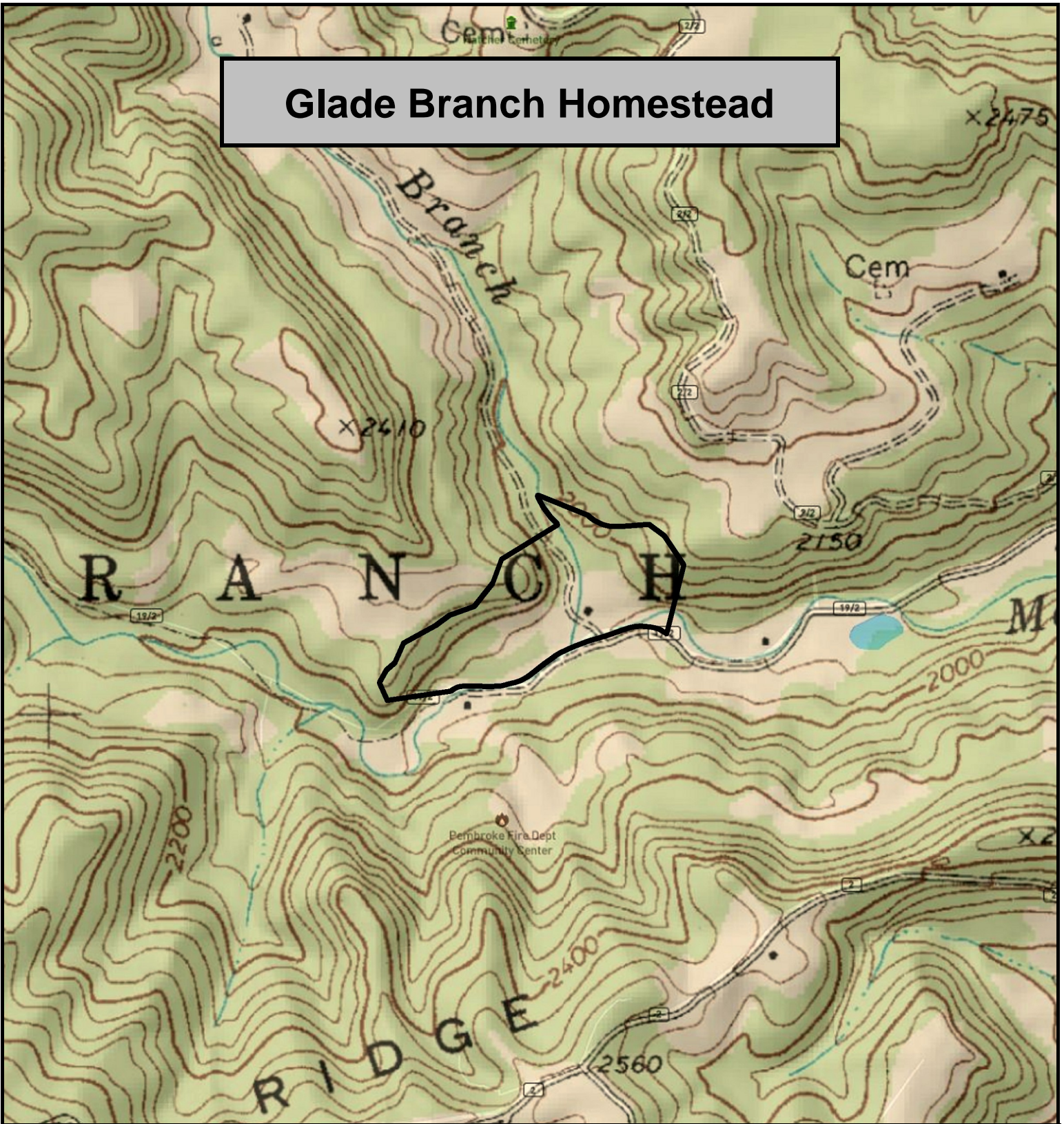


Glade Branch Homestead



Glade Branch Homestead, Mercer County, WV
TOPOGRAPHIC MAP

Elevation Range: 1948' - 2064' +/-

Google Coordinates: LAT 37.543052 (N), LON -81.071290 (W)

This map is for general location purposes only.

Consult a licensed land surveyor for actual boundary location and acreage.

TAX MAP DEPICTION OF THE PROPERTY IS SHOWN.

FOR TOPO MAP

SCALE 1:9600

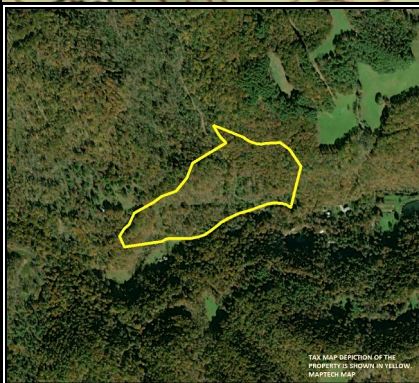
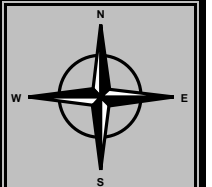
1 INCH = 800 FT.

0 1000 2000 3000

Feet

0.0 0.1 0.2 0.3 0.4 0.5 0.6

Miles



TAX MAP DEPICTION OF THE PROPERTY IS SHOWN IN YELLOW. MAPS/2014