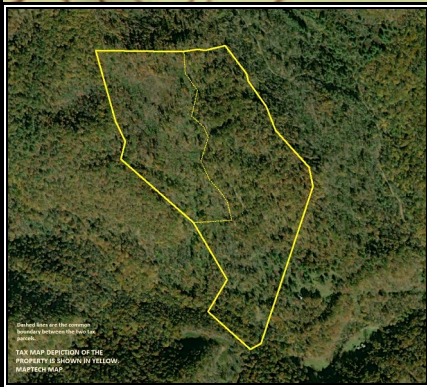
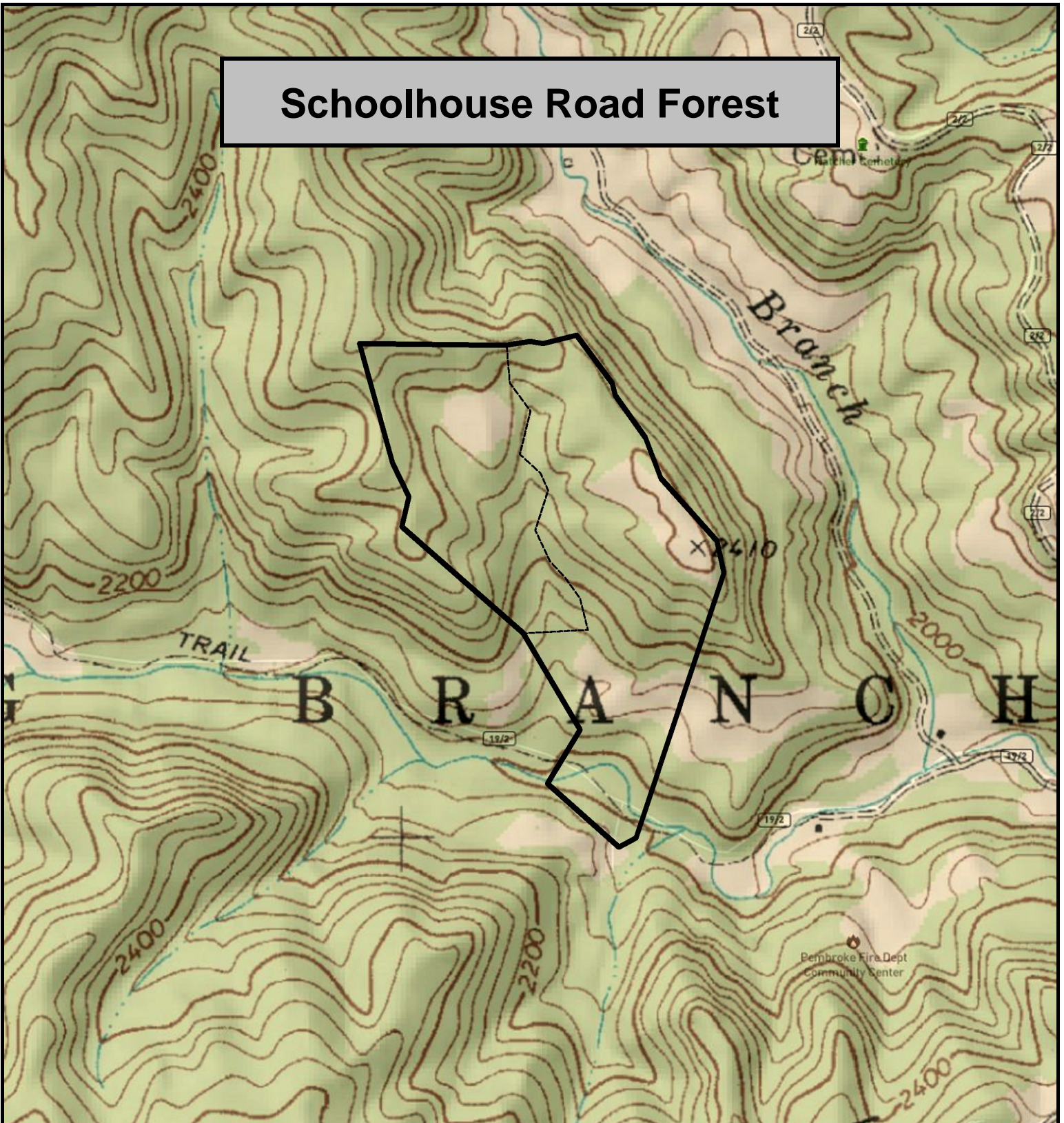


# Schoolhouse Road Forest



Schoolhouse Road Forest, Mercer County, WV  
TOPOGRAPHIC MAP

Elevation Range: 1987' - 2477' +/-

Google Coordinates: LAT 37.542349 (N), LON -81.078137 (W)

This map is for general location purposes only. Consult a licensed land surveyor for actual boundary location and acreage.

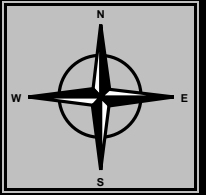
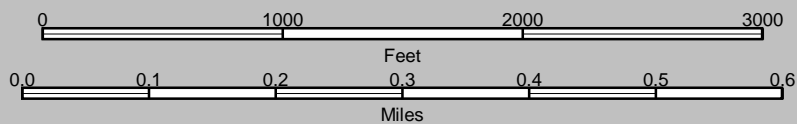
TAX MAP DEPICTION OF THE PROPERTY IS SHOWN.

Dashed lines are the common boundary between tax parcels.

FOR TOPO MAP

SCALE 1:9600

1 INCH = 800 FT.



Partial Map and the contour boundary between the Tax Parcels shown.  
TAX MAP DEPICTION OF THE PROPERTY IS SHOWN IN YELLOW.  
MAPTECHNOLOGY