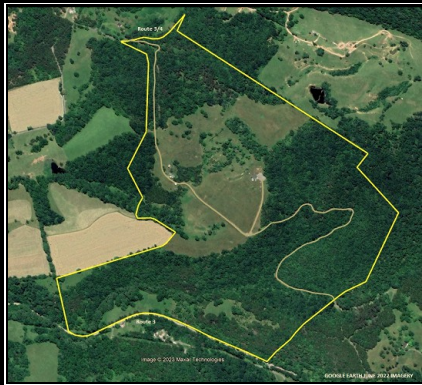
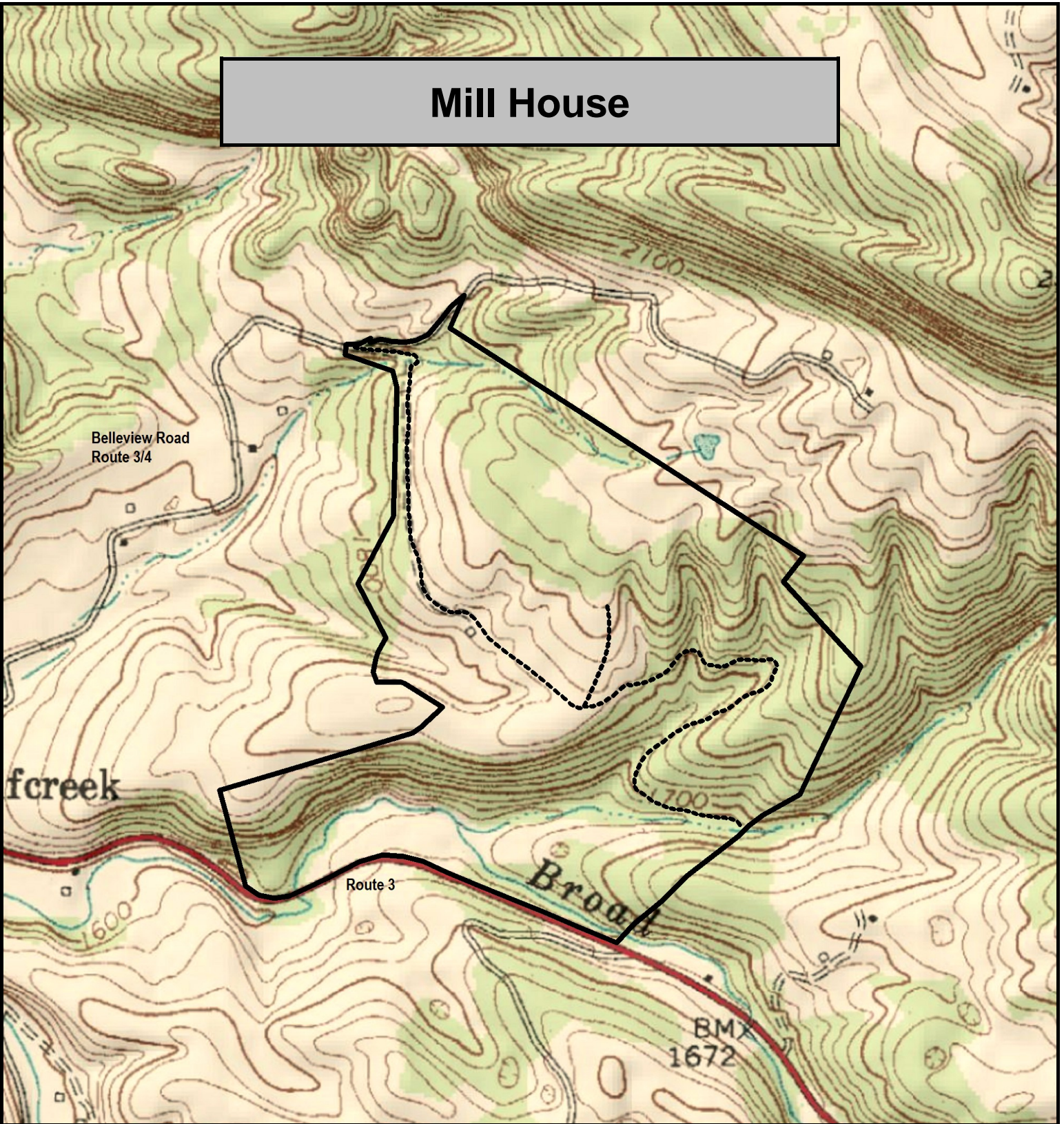


Mill House



Mill House, Monroe County, WV
TOPOGRAPHIC MAP
Elevation Range: 1620' - 1984' +/-
Google Coordinates: LAT 37.672770 (N), LON -80.613033 (W)
This map is for general location purposes only.
Consult a licensed land surveyor for actual boundary location and acreage.

FOR TOPO MAP SCALE 1:9600 1 INCH = 800 FT.

