

STREET Beach Ave. No 1523 Date August 18 1933 CD-10 Block 3919

BULKHEAD-SCUTTLE 188 Bulkhead—F.P.—Non-F.P.—outside metal cov'd—inside F.Ret. F.P. — F.Ret. — Selfclosing — Keylock Extend to roof — handrail — Accessible

SCUTTLE 22 x 32 Size — Over stair/hall — Outside metal covered — N.A. No LADDER Stair — Stationary iron ladder — Not Keylock — Accessible — Not Peaked Roof ADEQUATE

EGRESS 187-188-189 Stair Not Extends from street to roof—Egress to same from each apt.— Stair width in clear—Entrance hall width in clear 2'10" 7'2" DOORS Not TRANSOM None Fixed glass

SECOND MEANS OF EGRESS 187 Required Not FIRE ESCAPES 6-0-118- Where located — adequate FIRE STAIR—F.P. STAIR NONE Distance from first means of egress—accessible to each part.—f. p. s. c. doors—ADEQUATE

P. W. BALCONIES 187 Width—connects to adjoining bl'd'g having stair from entr. floor to roof—egress over roof of adj. bl'd'g and by stairs to street feasible—ADEQUATE

SPRINKLER SYSTEM 187 Where provided — ADEQUATE YARD 28'6" ST. VIA VACANT LOT

CELLAR STAIRS 190 Enclosed — with No CELLAR soffit and stringers covered — with — S. C. door prov. CELLAR ENTRANCE No CELLAR from outside bl'd'g—by F. P. stair—Fire ladder—size opening X

COOKING SPACES 83-176 COOKING RECESSES (Designate by letter) NONE Walls extend from floor to ceiling F. P. — F. RET. Walls — Ceiling

COOKING CLOSETS (Designate by letter) NONE F. P. — F. RET. floor — walls — ceilings DOOR Fire retarded on inner surface—opening Upper—size Lower—size artificial light

COOKING COMP. (Designate by letter) NONE F. P. — F. RET. Partitions — window to outer air — size of window between stop beads

KITCHEN (designate by letter) K Wall behind cooking apparatus. F. P. — F. RET.

MECHANICAL VENT Provided — where SPRINKLER Provided — where GAS — ELECTRICITY Provided — Combustible surf. at cooking app. — fire ret.

WATER CLOSETS 200 Sep. W. C. in each apt.—width of W. C. comp. 5'4"-6'9"-6'9" PARTITIONS Extend to ceil. — plastered — tiled ART. LIGHT Not Gas — electricity

FLOOR Waterproof — base waterproof — drip trays None enclosed with woodwork VENTILATION Window to outer air — skylight None ADEQUATE

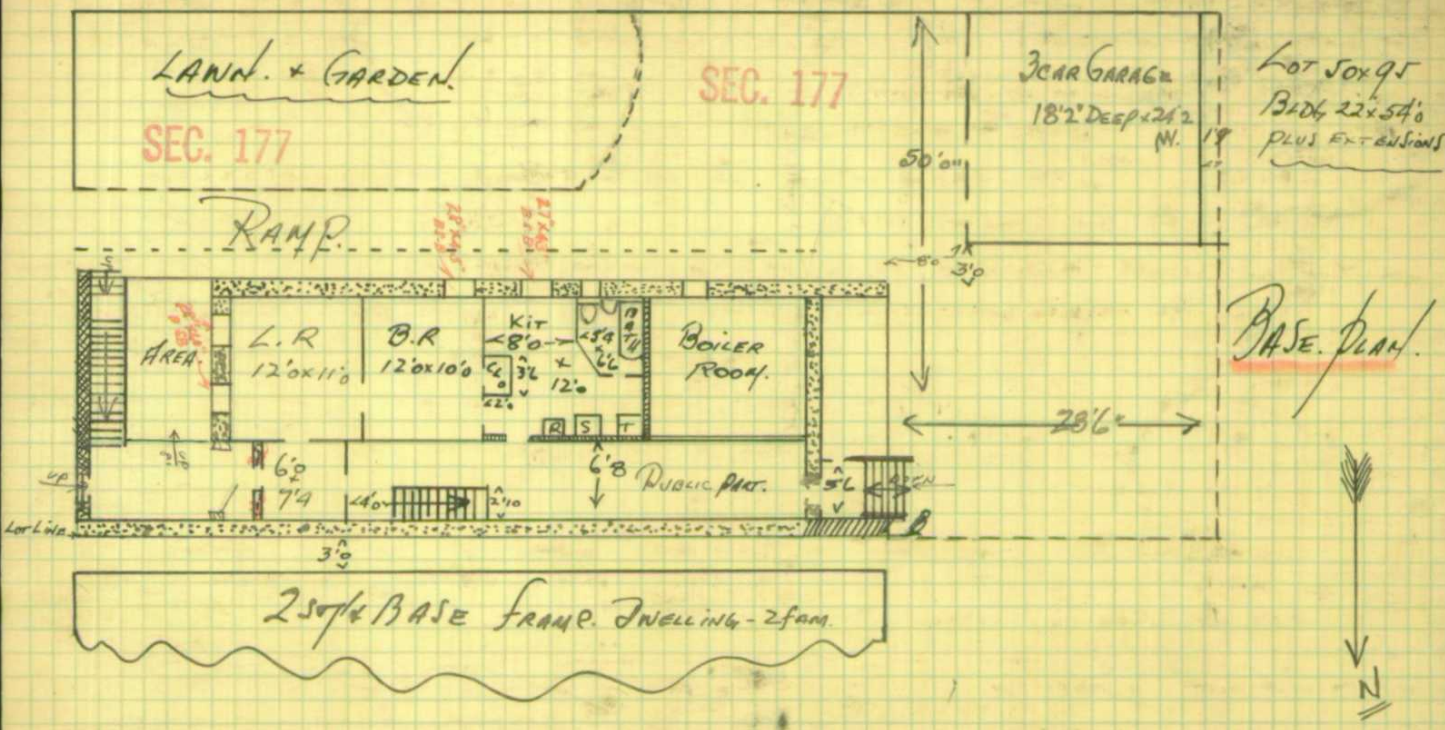
W. C.'S IN CELLAR Supplemental No CELLAR WATER SUPPLY 201 Appliances each story BASE 185 F. P. — F. Ret. — plastered BOARDS

COMBUSTIBLE MATERIALS 58 None BAKERY 59 where. "By" Card app. NONE BASEMENT OR CHANGING ROOMS 177 Used for living — adeq. lighted — vent. — fit for habitation

REAR BUILDING 28 Used for business — sep. passage to street — open to public or ent. hall MAIL BOXES Not Artificial light needed ADEQUATE

PUBLIC HALLS — LIGHT 40 Artificial light necessary — where Not PROHIBITED USES 82 Rooming house— Lodging house— Hotel— NONE NONE NONE where R. 673

B'LDG. BAS Bas Bas Bas 22' 54' Not ✓ STORIES 2 APTS 1 1 TOTAL 3
 Brick — Stone — Frame — Width — Depth — F. P. — NON F. P. — NUMBER B-6-30 30 — B-1-2-3-4-5-6



STREET

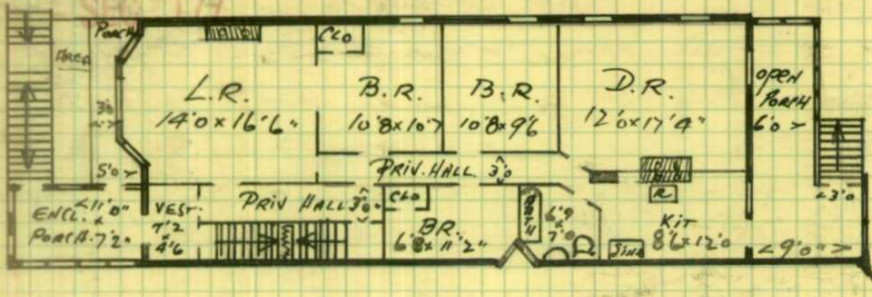
BEACH AVE

No 1523

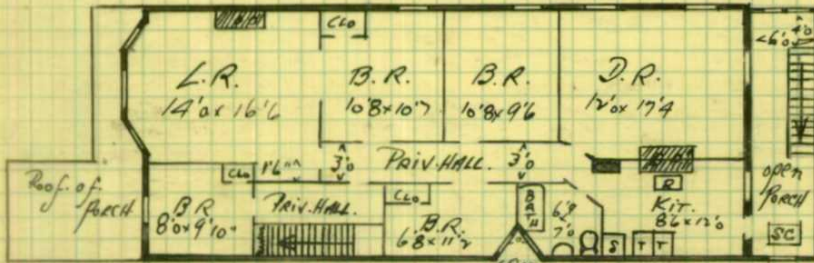
DATE AUGUST 18, 1933

Block 3919

HERETOFORE CONVERTED



1st Story PLAN



2nd Story PLAN

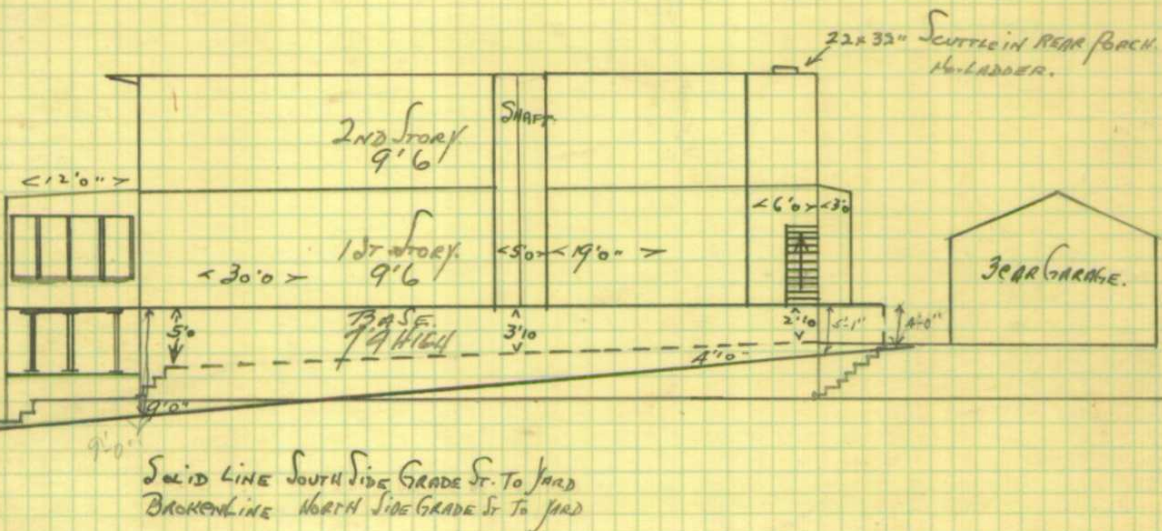
Form 1012 39-1066-30 M.S.

INSPECTOR

William A. Regan

DATE

AUGUST 18, 1933



SOLID LINE SOUTH SIDE GRADE ST. TO YARD
BROKEN LINE NORTH SIDE GRADE ST. TO YARD

INSPECTOR

William A. Regan

DATE

AUGUST 18, 1933

