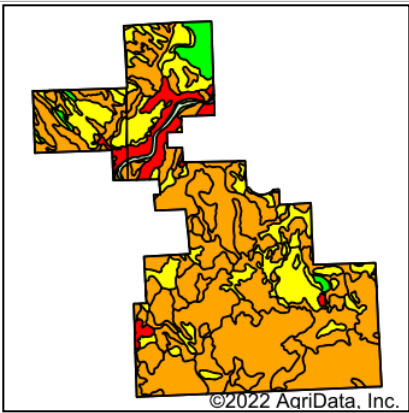
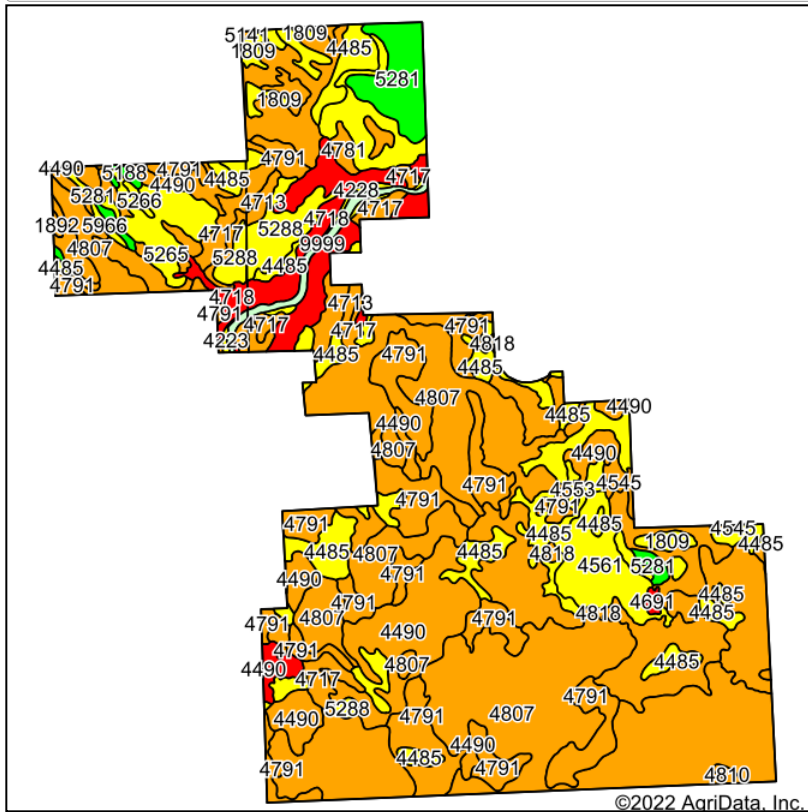


Soils Map



State: **Nebraska**
 County: **Cherry**
 Location: **5-31N-40W**
 Township: **Merriman**
 Acres: **10026**
 Date: **7/19/2022**



Soils data provided by USDA and NRCS.

Area Symbol: NE031, Soil Area Version: 27
 Area Symbol: NE161, Soil Area Version: 20

Code	Soil Description	Acres	Percent of field	Non-Irr Class Legend	Non-Irr Class *c	Irr Class *c	Range Production (lbs/acre/yr)	Corn Bu	Corn Irrigated Bu	*n NCCPI Overall	*n NCCPI Corn	*n NCCPI Small Grains	*n NCCPI Soybeans
4807	Valentine fine sand, rolling, 9 to 24 percent slopes	2857.09	28.5%		Vle		2265			15	13	15	14
4791	Valentine fine sand, 3 to 9 percent slopes	1547.74	15.4%		Vle	IVe	2374		85	20	19	20	19
4490	Dunday loamy fine sand, 3 to 9 percent slopes	906.52	9.0%		Vle		2398	2	20	24	22	23	24
4485	Dunday loamy fine sand, 0 to 3 percent slopes	790.56	7.9%		IVe		2440	2	12	24	22	23	24
4818	Valentine loamy fine sand, 3 to 9 percent slopes	601.08	6.0%		Vle	IVe	2369	1	85	21	19	20	21
4718	Orpha-Rock outcrop complex, 30 to 60 percent slopes	430.32	4.3%		Vlle		1745			3	3	3	3
4717	Orpha-Niobrara loamy fine sands, 9 to 30 percent slopes	421.46	4.2%		Vle		1875			13	9	10	12
5288	Vetal loamy fine sand, 0 to 3 percent slopes	405.46	4.0%		IIle		2410		108	30	23	25	30

Soils data provided by USDA and NRCS.

Maps Provided By:



© AgriData, Inc. 2021 www.AgriDataInc.com

Code	Soil Description	Acres	Percent of field	Non-Irr Class Legend	Non-Irr Class *c	Irr Class *c	Range Production (lbs/acre/yr)	Corn Bu	Corn Irrigated Bu	*n NCCPI Overall	*n NCCPI Corn	*n NCCPI Small Grains	*n NCCPI Soybeans
4561	Elsmere-Loup complex, 0 to 3 percent slopes	304.23	3.0%		IVw	IVw	4115		45	21	17	21	20
5281	Vetal fine sandy loam, 0 to 3 percent slopes	238.81	2.4%		IIc		2424	39	129	41	27	29	41
5265	Tuthill fine sandy loam, 0 to 3 percent slopes	203.24	2.0%		IIIe	IIe	2485		120	32	16	23	32
4490	Dunday loamy fine sand, 3 to 9 percent slopes	183.98	1.8%		VIe		2398	2	20	24	22	23	24
4807	Valentine fine sand, rolling, 9 to 24 percent slopes	129.17	1.3%		VIe		2265			15	13	15	14
1809	Satanta fine sandy loam, 1 to 3 percent slopes	102.01	1.0%		IIIe	IIe	2364		114	36	15	22	36
4791	Valentine fine sand, 3 to 9 percent slopes	81.15	0.8%		VIe	IVe	2374		85	20	19	20	19
9999	Water	67.56	0.7%				0						
4713	Orpha loamy fine sand, 3 to 9 percent slopes	65.01	0.6%		VIe	IVe	2300		63	20	14	16	20
4717	Orpha-Niobrara loamy fine sands, 9 to 30 percent slopes	61.30	0.6%		VIe		1875			13	9	10	12
4718	Orpha-Rock outcrop complex, 30 to 60 percent slopes	59.22	0.6%		VIIe		1955			2	2	2	2
4781	Valentine fine sand, 0 to 3 percent slopes	51.37	0.5%		VIe	IVe	2532		85	20	19	20	19
4818	Valentine loamy fine sand, 3 to 9 percent slopes	50.68	0.5%		VIe	IVe	2369	1	85	21	19	20	21
5288	Vetal loamy fine sand, 0 to 3 percent slopes	46.43	0.5%		IIIe		2410		108	30	23	25	30
5188	Keya loam, 0 to 2 percent slopes	42.11	0.4%		IIc	Ie	3055	45	135	56	34	35	56
4713	Orpha loamy fine sand, 3 to 9 percent slopes	40.26	0.4%		VIe	IVe	2300			15	8	12	15
4545	Els-lpage fine sands, 0 to 3 percent slopes	35.46	0.4%		VIw	IVw	3998		51	19	18	18	19
5266	Tuthill fine sandy loam, 3 to 6 percent slopes	34.87	0.3%		IIIe	IIIe	2444	26	115	37	24	28	37

Maps Provided By:



© AgriData, Inc. 2021

www.AgriDataInc.com

Code	Soil Description	Acres	Percent of field	Non-Irr Class Legend	Non-Irr Class *c	Irr Class *c	Range Production (lbs/acre/yr)	Corn Bu	Corn Irrigated Bu	*n NCCPI Overall	*n NCCPI Corn	*n NCCPI Small Grains	*n NCCPI Soybeans
4228	Bolent-Calamus, calcareous loamy fine sands, occasionally flooded	32.60	0.3%		IVe	IVw	4220	9	33	21	15	17	21
4485	Dunday loamy fine sand, 0 to 3 percent slopes	30.66	0.3%		IVe		2440	2	12	24	22	23	24
1892	Valent loamy fine sand, 3 to 9 percent slopes	27.79	0.3%		Vle		1935	1	2	16	9	14	16
4556	Eismere loamy fine sand, calcareous, 0 to 3 percent slopes	22.74	0.2%		IVw	IVw	3813	3	6	17	12	16	17
5281	Vetal fine sandy loam, 0 to 3 percent slopes	22.69	0.2%		IIle		1563			39	17	26	39
4243	Ord loam, rarely flooded	22.25	0.2%		IIIw	IIIw	4730		98	37	24	30	37
4553	Eismere loamy fine sand, 0 to 3 percent slopes	14.66	0.1%		IVw	IVw	4290		77	24	21	23	23
5966	Jayem fine sandy loam, 3 to 6 percent slopes	13.92	0.1%		IVe	IIle	1799		102	33	15	22	33
4691	Marlake mucky peat	13.04	0.1%		VIIIw		576			2	2	1	1
9999	Water	12.28	0.1%				0						
4810	Valentine fine sand, rolling and hilly, 9 to 60 percent slopes	12.24	0.1%		Vle		2262			13	11	13	11
5266	Tuthill fine sandy loam, 3 to 6 percent slopes	11.94	0.1%		IIle	IIle	2485		115	32	15	23	32
5121	Busher fine sandy loam, 6 to 9 percent slopes	10.54	0.1%		IVe	IVe	2232		64	35	24	26	35
1809	Satanta fine sandy loam, 1 to 3 percent slopes	10.22	0.1%		IIle	Ile	2364		114	36	15	22	36
4223	Bolent loamy fine sand, occasionally flooded	5.12	0.1%		IVw	IVw	5000		78	18	9	12	17
5141	Busher-Tassel fine sandy loams, 9 to 30 percent slopes	3.99	0.0%		Vle		1910			27	20	21	27
4716	Orpha-Niobrara complex, 9 to 30 percent slopes	2.23	0.0%		Vle		1740			10	6	8	10
Weighted Average					*-	*-	2355.5	1.7	38.3	*n 19.7	*n 16.5	*n 18.2	*n 19.1

*n: The aggregation method is "Weighted Average using all components"

*c: Using Capabilities Class Dominant Condition Aggregation Method

*- Non Irr Class weighted average cannot be calculated on the current soils data due to missing data.

*- Irr Class weighted average cannot be calculated on the current soils data due to missing data.