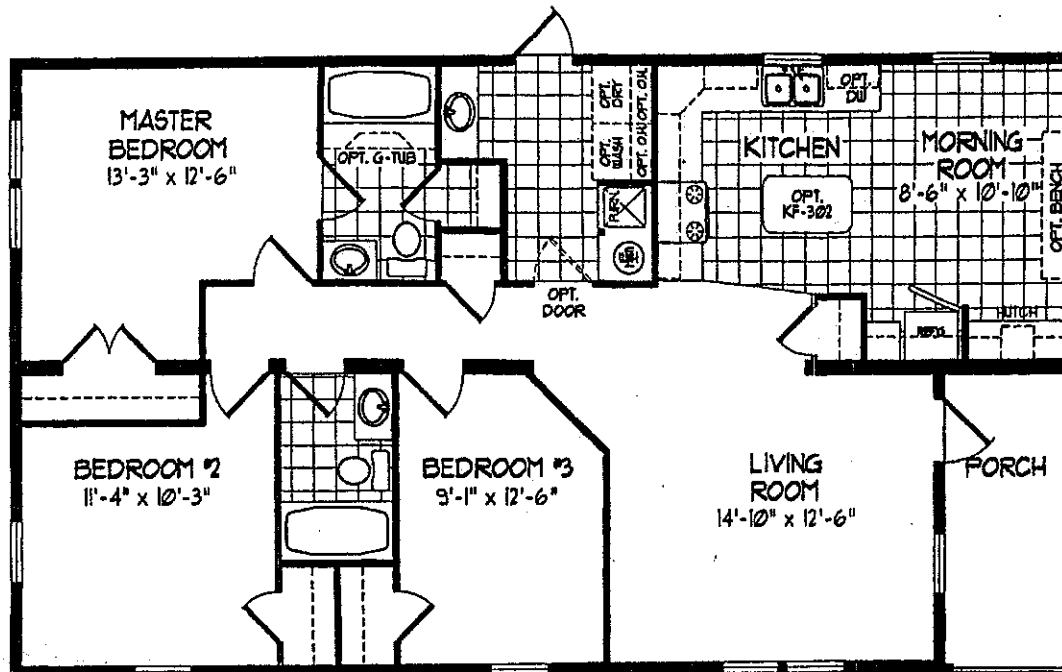


The Chestnut: 3 Bedrooms, 2 Baths

Approx. 1280 square feet



Each distinctive single-story home at Shelly Park includes:

- Attractive steep-pitch roof design with attic space
- Front porch
- Paved driveway leading to attached one-car garage
- Masonry foundation with grading
- Underground gas supply
- Individual yard

The Chestnut features:

- 3 Bedrooms
- 2 Baths
- Living room
- Morning room
- Porch
- Utility room



Shelly Park

Adult Community