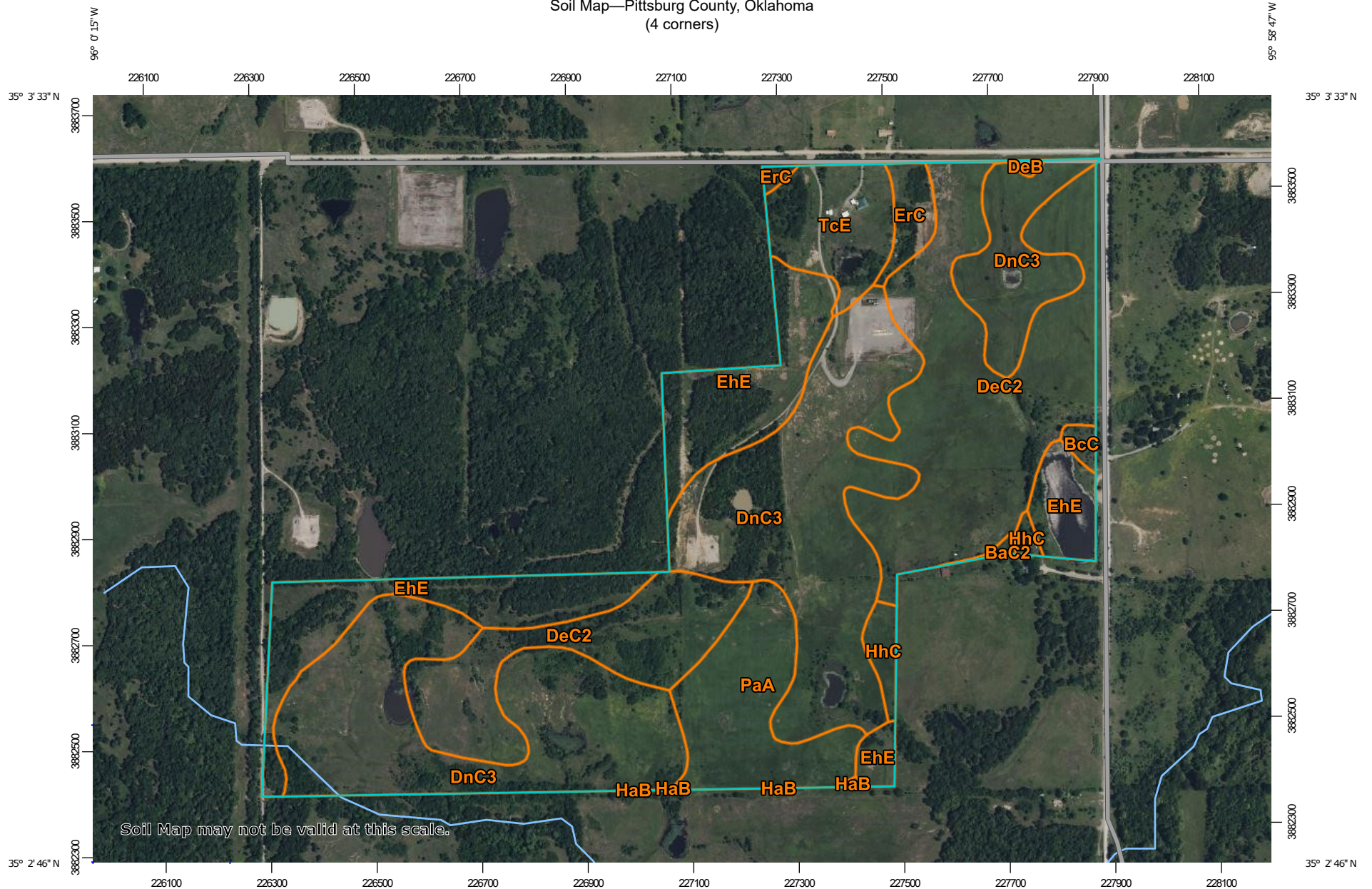
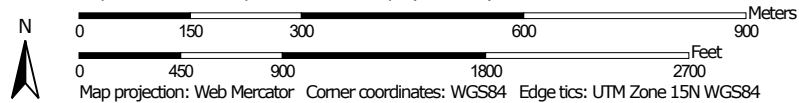


Soil Map—Pittsburg County, Oklahoma  
(4 corners)



Soil Map may not be valid at this scale.

Map Scale: 1:10,200 if printed on A landscape (11" x 8.5") sheet.



## MAP LEGEND

### Area of Interest (AOI)

 Area of Interest (AOI)

### Soils

 Soil Map Unit Polygons

 Soil Map Unit Lines

 Soil Map Unit Points

### Special Point Features



Blowout



Borrow Pit



Clay Spot



Closed Depression



Gravel Pit



Gravelly Spot



Landfill



Lava Flow



Marsh or swamp



Mine or Quarry



Miscellaneous Water



Perennial Water



Rock Outcrop



Saline Spot



Sandy Spot



Severely Eroded Spot



Sinkhole



Slide or Slip



Sodic Spot



Spoil Area



Stony Spot



Very Stony Spot



Wet Spot



Other



Special Line Features

### Water Features



Streams and Canals

### Transportation



Rails



Interstate Highways



US Routes



Major Roads



Local Roads

### Background



Aerial Photography

## MAP INFORMATION

The soil surveys that comprise your AOI were mapped at 1:24,000.

Warning: Soil Map may not be valid at this scale.

Enlargement of maps beyond the scale of mapping can cause misunderstanding of the detail of mapping and accuracy of soil line placement. The maps do not show the small areas of contrasting soils that could have been shown at a more detailed scale.

Please rely on the bar scale on each map sheet for map measurements.

Source of Map: Natural Resources Conservation Service

Web Soil Survey URL:

Coordinate System: Web Mercator (EPSG:3857)

Maps from the Web Soil Survey are based on the Web Mercator projection, which preserves direction and shape but distorts distance and area. A projection that preserves area, such as the Albers equal-area conic projection, should be used if more accurate calculations of distance or area are required.

This product is generated from the USDA-NRCS certified data as of the version date(s) listed below.

Soil Survey Area: Pittsburg County, Oklahoma

Survey Area Data: Version 17, Sep 8, 2023

Soil map units are labeled (as space allows) for map scales 1:50,000 or larger.

Date(s) aerial images were photographed: May 12, 2022—Jun 22, 2022

The orthophoto or other base map on which the soil lines were compiled and digitized probably differs from the background imagery displayed on these maps. As a result, some minor shifting of map unit boundaries may be evident.

## Map Unit Legend

Map Unit Symbol	Map Unit Name	Acres in AOI	Percent of AOI
BaC2	Bates fine sandy loam, 1 to 3 percent slopes, eroded	0.4	0.1%
BcC	Bates-Coweta complex, 3 to 5 percent slopes	1.0	0.4%
DeB	Dennis loam, 1 to 3 percent slopes	0.3	0.1%
DeC2	Dennis loam, 3 to 5 percent slopes, eroded	71.9	28.1%
DnC3	Dennis-Pharoah-Eram complex, 3 to 5 percent slopes, severely eroded	103.4	40.5%
EhE	Bengal-Clebit-Clearview complex, 5 to 30 percent slopes	39.6	15.5%
ErC	Eram clay loam, 3 to 5 percent slopes	4.1	1.6%
HaB	Clearview fine sandy loam, 1 to 3 percent slopes	0.2	0.1%
HhC	Clebit-Clearview complex, 3 to 5 percent slopes	3.0	1.2%
PaA	Parsons silt loam, 0 to 1 percent slopes	19.3	7.5%
TcE	Talihina-Eram-Collinsville complex, 5 to 20 percent slopes	12.2	4.8%
<b>Totals for Area of Interest</b>		<b>255.4</b>	<b>100.0%</b>