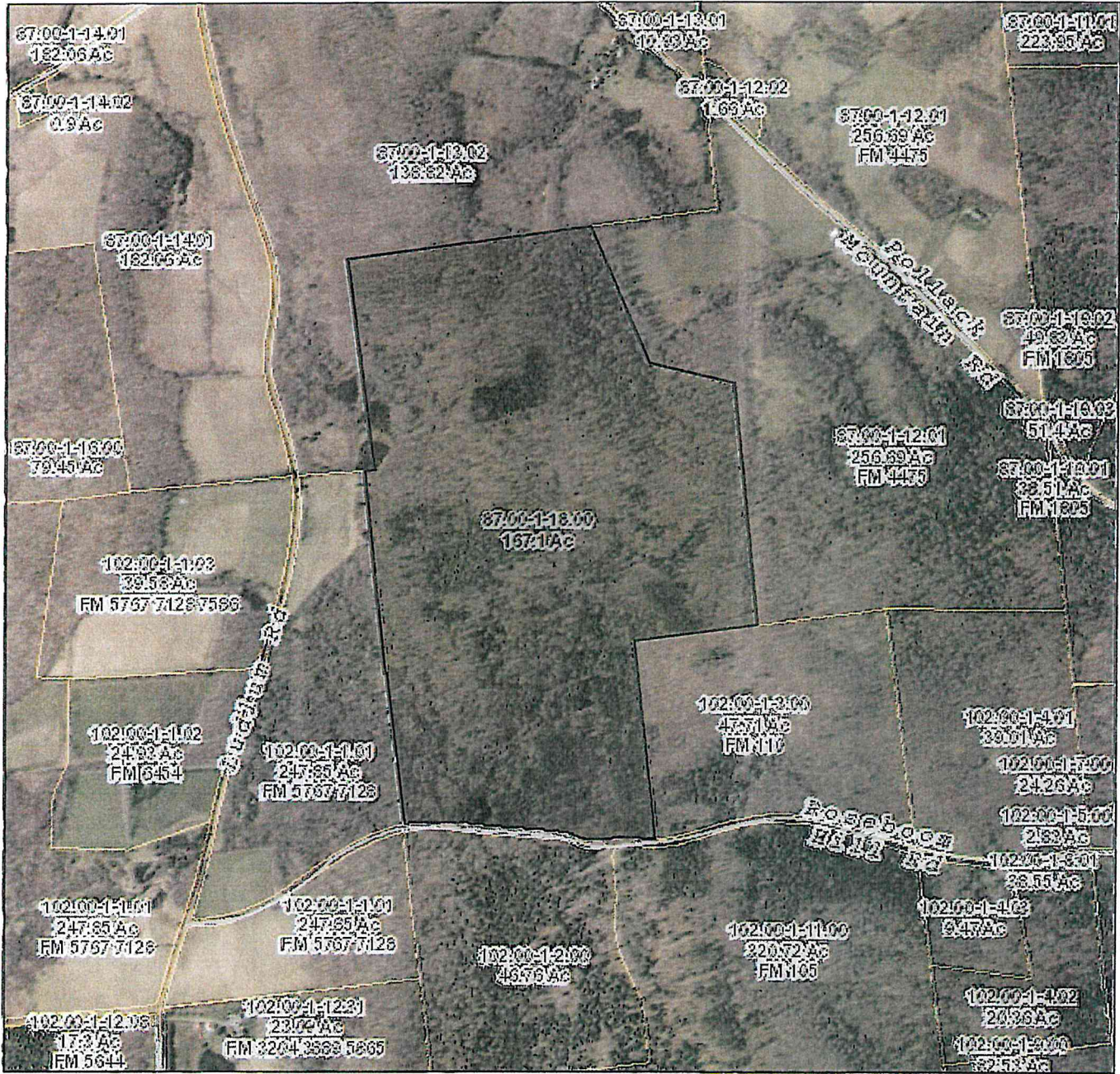


# Otsego County, New York Geographic Information System (GIS)



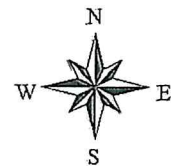
Date Printed: 9/13/2023



### MAP DISCLAIMER - NOTICE OF LIABILITY

This map is for assessment purposes only. It is not for legal description or conveyances. All information is subject to verification by any user. Otsego County, NY and its mapping contractors assume no legal responsibility for the information contained herein.

Approximate Scale: 1 inch = 1000 feet



# Roseboom Hill Road



High Resolution Printed Map

View 3D

Navigation toolbar containing icons for: Home, Back, Forward, Home, Print, Measure, Rotate, Full Screen, and Search.

Map navigation controls including zoom in (+), zoom out (-), and a compass icon.

**Otsego County, New York**  
Geographic Information System (GIS)

A - Aheron 161.1 A  
\* State Land  
628.64 Acres

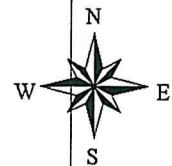
Date Printed: 9/18/2023



**MAP DISCLAIMER - NOTICE OF LIABILITY**

This map is for assessment purposes only. It is not for legal description or conveyances. All information is subject to verification by any user. Otsego County, NY and its mapping contractors assume no legal responsibility for the information contained herein.

Approximate Scale: 1 inch = 3000 feet



# Roseboom State Forest

Roseboom, Middlefield - WMU 4F

The undeveloped 620-acre Roseboom State Forest features a mix of planted and natural tree species scattered across the landscape. The unit was purchased in the 1960's for conservation, reforestation, and the development of natural resources.

<http://www.dec.ny.gov/lands/102516.html>

