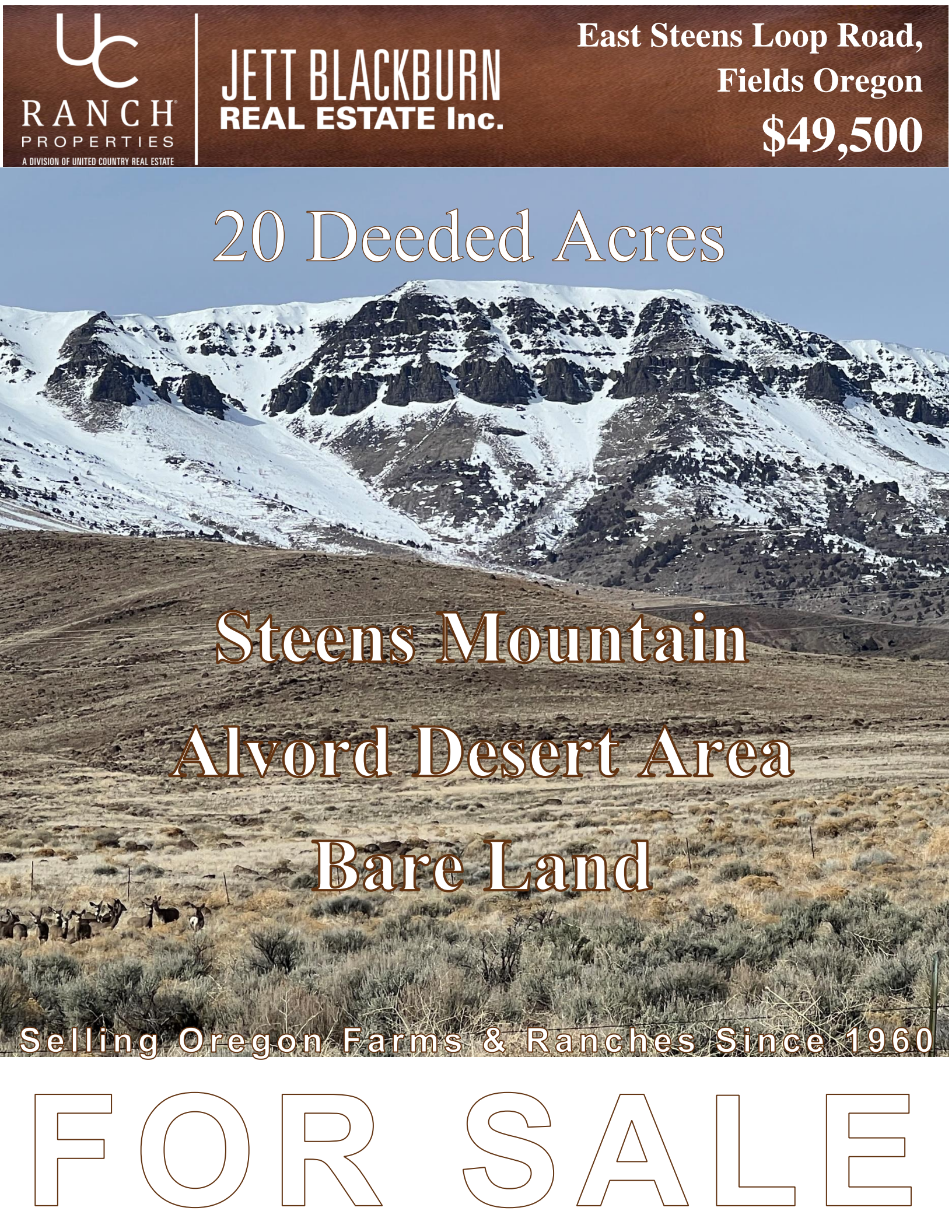


20 Deeded Acres



Steens Mountain
Alvord Desert Area
Bare Land

Selling Oregon Farms & Ranches Since 1960

FOR SALE



TAX LOT MAPS: T36S R33E W.M. Sec 09, Tax Lot 100

ACREAGE: 20 acres (+/-); no conditional use building permit on file with Harney County

FINANCING: Cash or bank loan

TAXES: \$50.95 estimated (Farm deferral)

PRICE: \$49,500

ACCESS: The county road commonly referred to as the East Steens Loop Road is a paved road that crosses the southeast corner of the property. In addition, Harney County owns and operates a county road department facility serviced by a road that runs along the south side of the property.

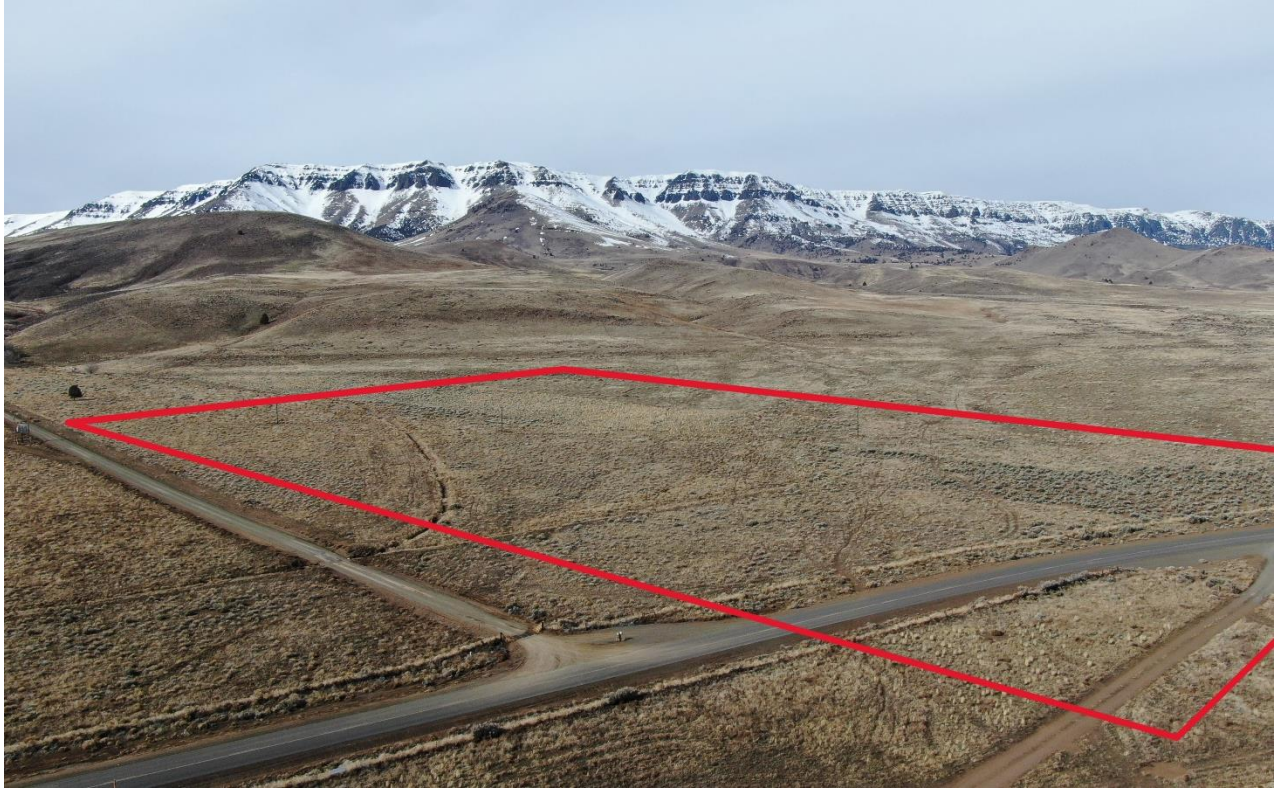
POWER: Harney Electric Cooperative

FENCE: The property is fenced with four-strand barbed wire fencing on the north and east sides. The northside fence appears to be built slightly off the property line deeper into the 20 acres being sold. As it is not available, a survey would be recommended.

TOPOGRAPHY: The ground is covered with sagebrush and native bunch grasses. The ground is relatively flat with a gentle slope from the northwest corner down to the southeast corner which is very nice for a future home site that would take full advantage of the remarkable views.

REMARKS: Discover the wonderful tranquility and natural beauty with this rare 20-acre bare land property along the East Steens Loop Road in Harney County. Nestled against the backdrop of the majestic Steens Mountains, this parcel offers a rare opportunity to create your dream retreat or homestead. Immerse yourself in the breathtaking scenery and wide-open spaces that define Eastern Oregon. With unobstructed panoramic views this blank canvas invites you to envision and craft your own oasis in the heart of the high desert. Don't miss the chance to make your aspirations a reality on this remarkable slice of Oregon's untamed landscape.

The seller and his agent makes these representations in good faith, from personal knowledge and experience. However, the buyer should inspect this property or cause this property to be inspected by knowledgeable persons so that the buyer may purchase without relying upon any representations made by the seller or his agent. Also, unless otherwise specified, we, Jett Blackburn Real Estate, Inc. agents, represent the seller on any of our listings.







Steens Mountain: The 20-acre property is located at the base of the Steens Mountains in the frontier part of eastern Oregon. Steens Mountain, a prominent and captivating natural landmark situated in Harney County, commands attention with its majestic presence and diverse ecosystems. Soaring to an elevation of over 9,700 feet, the mountain stands as the highest peak in the remote southeast region of the state. Renowned for its breathtaking landscapes, Steens Mountain offers a stunning array of scenery, including rugged canyons, verdant meadows, and alpine tundra. Visitors can explore the scenic Steens Mountain Loop Road, which provides access to panoramic viewpoints such as Kiger Gorge and the Alvord Desert. Steens Mountain encapsulates the natural beauty and rugged charm that defines the untamed landscapes of the Pacific Northwest.

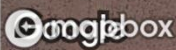
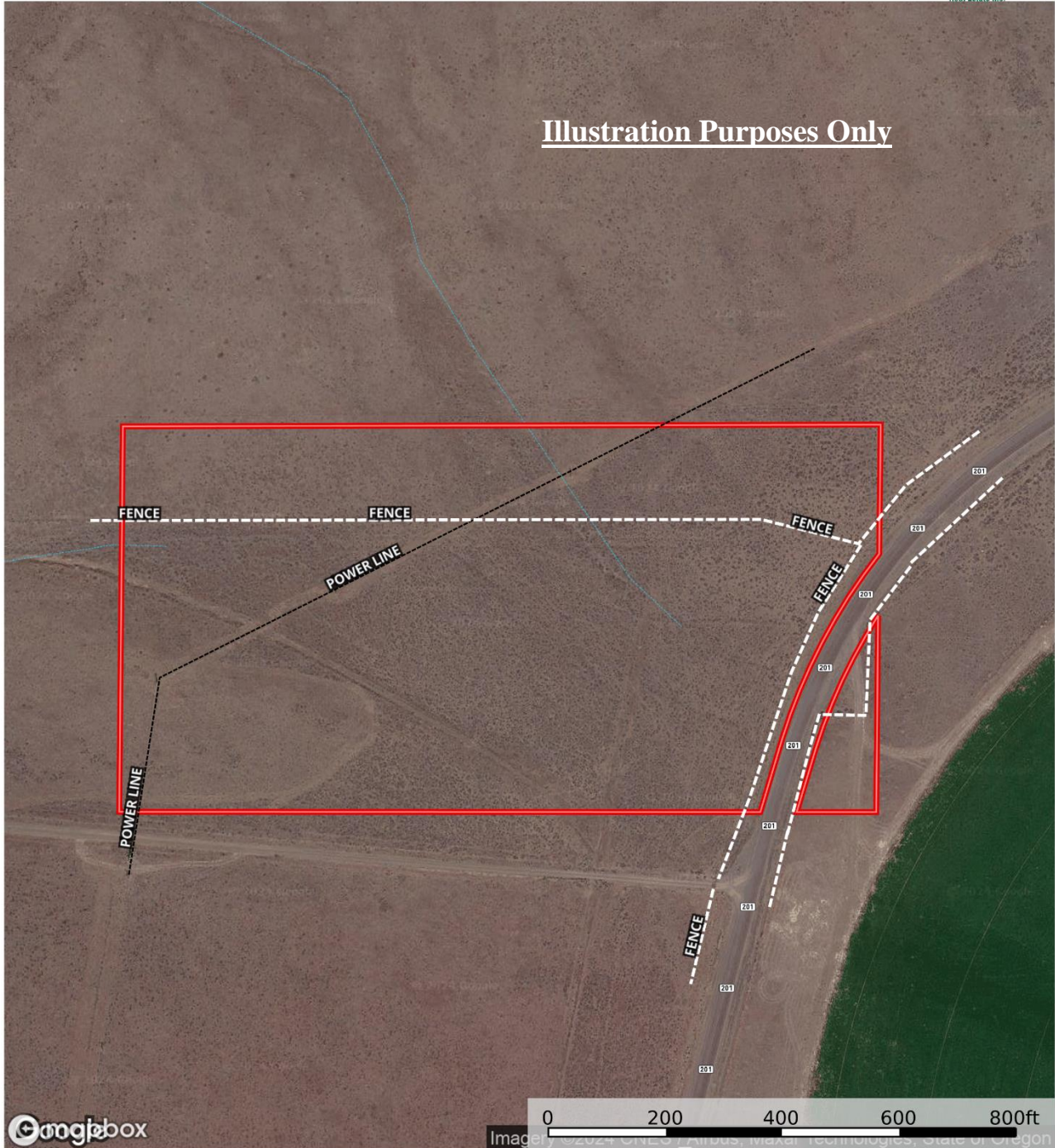
Alvord Desert: The Alvord Desert, a captivating expanse located in Harney County, is a surreal and remote landscape that captivates with its vast openness and unique features. Spanning approximately 84,000 acres, this expansive playa is one of the largest dry lake beds in the state. Set against the dramatic backdrop of Steens Mountain, the Alvord Desert offers a truly otherworldly experience, with its flat, cracked earth stretching for miles and mirage-like illusions shimmering on the horizon. During the dry season, the cracked surface reveals a hardened crust, making it an ideal location for various recreational activities such as land sailing and stargazing. The Alvord Desert, with its serene desolation and stark beauty, stands as a testament to the raw and untamed landscapes that characterize the diverse natural wonders of Oregon.



Harney County, Oregon, 20 AC +/-

Jett Blackburn
Real Estate Inc.

Illustration Purposes Only



Imagery ©2024 Google, Imagery ©2024 Mapbox, Imagery ©2024 OpenStreetMap contributors, Imagery ©2024 State of Oregon

- Fence
- Power Line
- Boundary
- Stream, Intermittent
- River/Creek
- Water Body

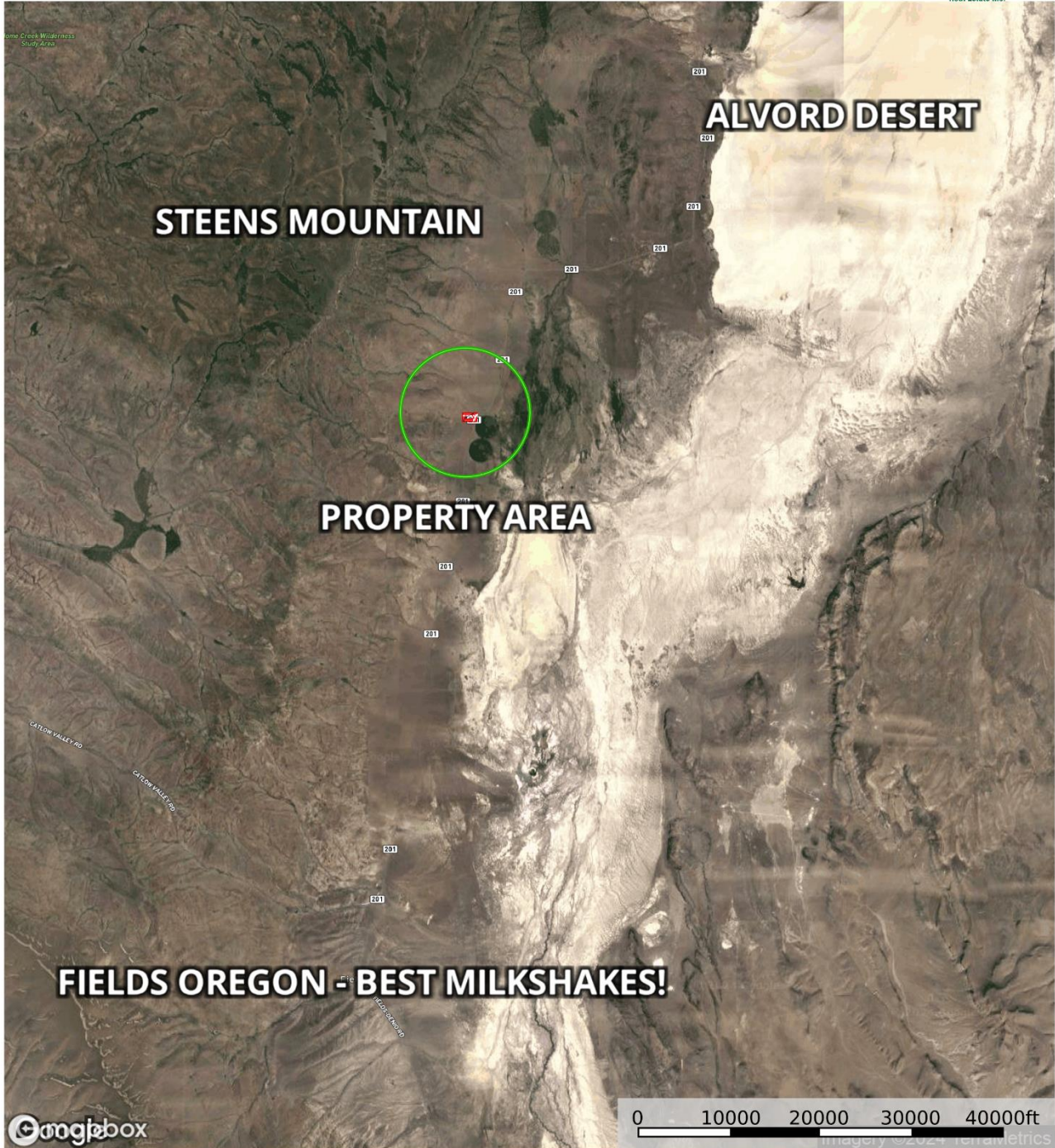
United County Jett Blackburn Real Estate (map for illustration purposes only)

The information contained herein was obtained from



Harney County, Oregon, 20 AC +/-

Jett Blackburn
Real Estate Inc.



Fence Power Line Boundary Pivot

United County Jett Blackburn Real Estate (map for illustration purposes only)

The information contained herein was obtained from



United Country Jett Blackburn Real Estate

United Country is a franchise-based real estate marketing company that has shown tremendous success in the real estate industry for the last 95 years. Throughout the entire United States, UC has sold over 2.8 million acres in 2022 alone, with \$9.9 billion in sales all together that covered a majority of recreational, farms, & ranches. To help make these sales possible UC has a comprehensive marketing program that includes printed advertising and special property marketing websites for farms & ranches. These marketing sites include Western Livestock Journal, Land & Farm, Capital Press, Lands of America, Farm & Ranch, Lands.com, SPG's, and much more. They are partnered with Realtree United Country Hunting Properties & UC Ranch Properties.

Jett Blackburn Real Estate Inc. is an independently owned brokerage franchised under United Country. First opened in 1960, Jett Blackburn Real Estate has been the oldest standing firm in their area specializing in sales of farms, ranches, hunting properties, recreational, & more. Curt Blackburn is the current owner & principal broker of Jett Blackburn Real Estate.

Presented By



Colby Marshall
Principal Broker
Accredited Land Consultant

colby@jettblackburn.com

(541)413-5772