



**BACK FORTY**  
BUILDING CO.

DESIGNER INFORMATION  
DATE: 5/10/2022

BUILDER INFORMATION  
PROJECT INFORMATION  
2027 12-30

CLIENT INFORMATION  
DESIGN CRITERIA

PLAN AREAS  
SCHEDULES  
LIVING AREAS  
BEDROOM AREAS  
BATHROOM AREAS  
W.C. AREAS  
STAIRS  
HALLWAYS

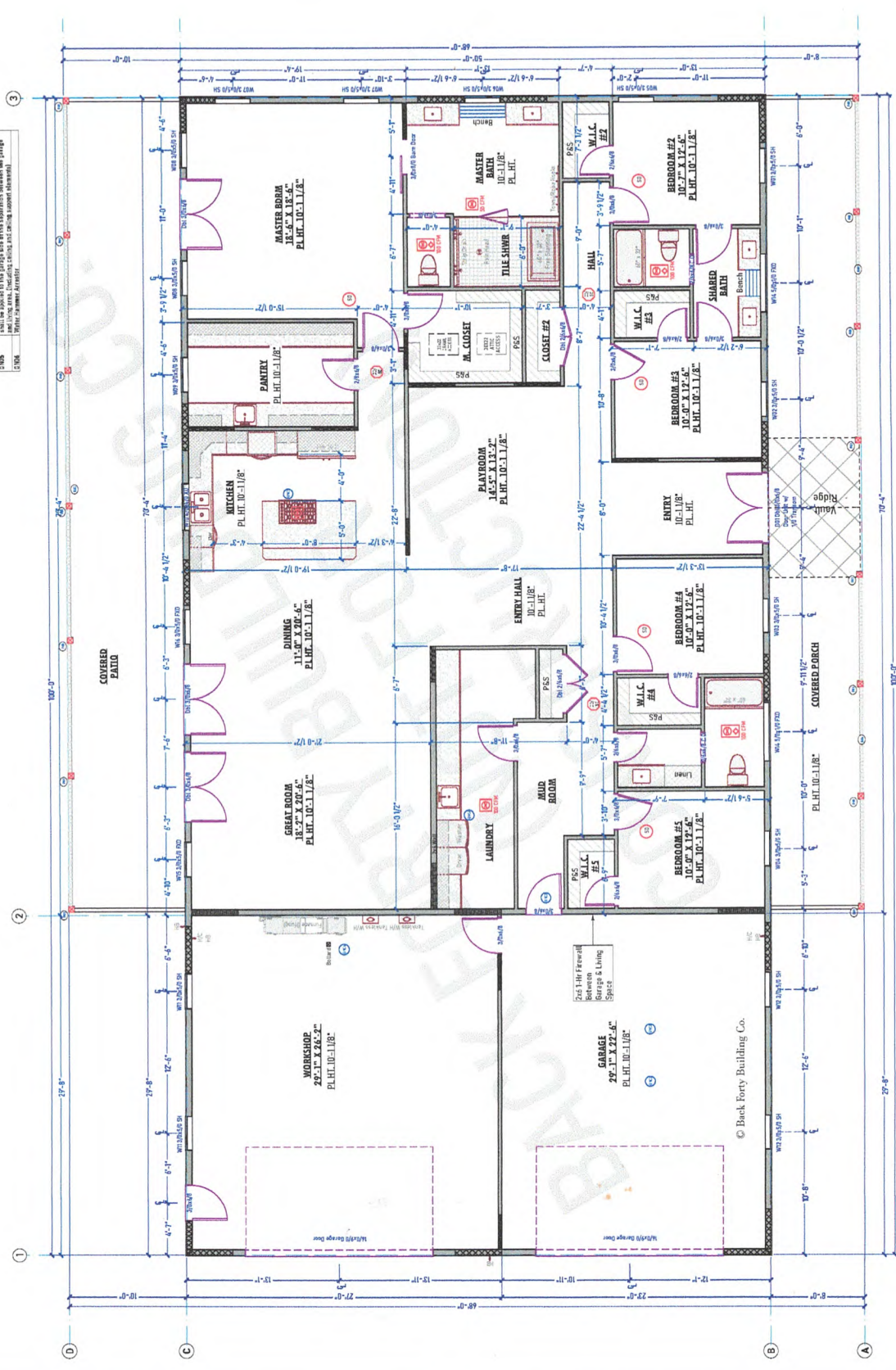
**FINISHES INDEX**

NO.	FINISH
1	CEILING
2	FLOOR
3	WALL
4	DOOR
5	WINDOW
6	STAIR
7	W.C.
8	SHOWER
9	BATH
10	TILE
11	CABINETS
12	ISLAND
13	SEATING
14	STOVE
15	SINK
16	REF
17	DISHWASHER
18	FRIDGE
19	STOVE
20	SINK
21	REF
22	DISHWASHER
23	FRIDGE
24	STOVE
25	SINK
26	REF
27	DISHWASHER
28	FRIDGE
29	STOVE
30	SINK
31	REF
32	DISHWASHER
33	FRIDGE
34	STOVE
35	SINK
36	REF
37	DISHWASHER
38	FRIDGE
39	STOVE
40	SINK
41	REF
42	DISHWASHER
43	FRIDGE
44	STOVE
45	SINK
46	REF
47	DISHWASHER
48	FRIDGE
49	STOVE
50	SINK
51	REF
52	DISHWASHER
53	FRIDGE
54	STOVE
55	SINK
56	REF
57	DISHWASHER
58	FRIDGE
59	STOVE
60	SINK
61	REF
62	DISHWASHER
63	FRIDGE
64	STOVE
65	SINK
66	REF
67	DISHWASHER
68	FRIDGE
69	STOVE
70	SINK
71	REF
72	DISHWASHER
73	FRIDGE
74	STOVE
75	SINK
76	REF
77	DISHWASHER
78	FRIDGE
79	STOVE
80	SINK
81	REF
82	DISHWASHER
83	FRIDGE
84	STOVE
85	SINK
86	REF
87	DISHWASHER
88	FRIDGE
89	STOVE
90	SINK
91	REF
92	DISHWASHER
93	FRIDGE
94	STOVE
95	SINK
96	REF
97	DISHWASHER
98	FRIDGE
99	STOVE
100	SINK

Date Printed: 5/10/2022  
SHEET INFORMATION  
Main Floor Plan & Sched.  
SHEET 3  
**AE201**  
PAGE # 4

**SPECIAL MATERIAL SCHEDULE**

NO.	DESCRIPTION
1	1/2" X 1/2" Square Structural Steel
2	1/4" X 1/2" Square Structural Steel
3	1/2" X 1/2" Square Structural Steel
4	1/4" X 1/2" Square Structural Steel
5	1/2" X 1/2" Square Structural Steel
6	1/4" X 1/2" Square Structural Steel
7	1/2" X 1/2" Square Structural Steel
8	1/4" X 1/2" Square Structural Steel
9	1/2" X 1/2" Square Structural Steel
10	1/4" X 1/2" Square Structural Steel



**BRICK WALL PANEL LEGEND**

- XXXXXX: 2" BRICK WITH 1/4" REINFORCING STEEL
- XXXXXX: 4" BRICK WITH 1/4" REINFORCING STEEL
- XXXXXX: 6" BRICK WITH 1/4" REINFORCING STEEL
- XXXXXX: 8" BRICK WITH 1/4" REINFORCING STEEL
- XXXXXX: 10" BRICK WITH 1/4" REINFORCING STEEL
- XXXXXX: 12" BRICK WITH 1/4" REINFORCING STEEL
- XXXXXX: 14" BRICK WITH 1/4" REINFORCING STEEL
- XXXXXX: 16" BRICK WITH 1/4" REINFORCING STEEL
- XXXXXX: 18" BRICK WITH 1/4" REINFORCING STEEL
- XXXXXX: 20" BRICK WITH 1/4" REINFORCING STEEL
- XXXXXX: 22" BRICK WITH 1/4" REINFORCING STEEL
- XXXXXX: 24" BRICK WITH 1/4" REINFORCING STEEL
- XXXXXX: 26" BRICK WITH 1/4" REINFORCING STEEL
- XXXXXX: 28" BRICK WITH 1/4" REINFORCING STEEL
- XXXXXX: 30" BRICK WITH 1/4" REINFORCING STEEL
- XXXXXX: 32" BRICK WITH 1/4" REINFORCING STEEL
- XXXXXX: 34" BRICK WITH 1/4" REINFORCING STEEL
- XXXXXX: 36" BRICK WITH 1/4" REINFORCING STEEL
- XXXXXX: 38" BRICK WITH 1/4" REINFORCING STEEL
- XXXXXX: 40" BRICK WITH 1/4" REINFORCING STEEL
- XXXXXX: 42" BRICK WITH 1/4" REINFORCING STEEL
- XXXXXX: 44" BRICK WITH 1/4" REINFORCING STEEL
- XXXXXX: 46" BRICK WITH 1/4" REINFORCING STEEL
- XXXXXX: 48" BRICK WITH 1/4" REINFORCING STEEL
- XXXXXX: 50" BRICK WITH 1/4" REINFORCING STEEL
- XXXXXX: 52" BRICK WITH 1/4" REINFORCING STEEL
- XXXXXX: 54" BRICK WITH 1/4" REINFORCING STEEL
- XXXXXX: 56" BRICK WITH 1/4" REINFORCING STEEL
- XXXXXX: 58" BRICK WITH 1/4" REINFORCING STEEL
- XXXXXX: 60" BRICK WITH 1/4" REINFORCING STEEL
- XXXXXX: 62" BRICK WITH 1/4" REINFORCING STEEL
- XXXXXX: 64" BRICK WITH 1/4" REINFORCING STEEL
- XXXXXX: 66" BRICK WITH 1/4" REINFORCING STEEL
- XXXXXX: 68" BRICK WITH 1/4" REINFORCING STEEL
- XXXXXX: 70" BRICK WITH 1/4" REINFORCING STEEL
- XXXXXX: 72" BRICK WITH 1/4" REINFORCING STEEL
- XXXXXX: 74" BRICK WITH 1/4" REINFORCING STEEL
- XXXXXX: 76" BRICK WITH 1/4" REINFORCING STEEL
- XXXXXX: 78" BRICK WITH 1/4" REINFORCING STEEL
- XXXXXX: 80" BRICK WITH 1/4" REINFORCING STEEL
- XXXXXX: 82" BRICK WITH 1/4" REINFORCING STEEL
- XXXXXX: 84" BRICK WITH 1/4" REINFORCING STEEL
- XXXXXX: 86" BRICK WITH 1/4" REINFORCING STEEL
- XXXXXX: 88" BRICK WITH 1/4" REINFORCING STEEL
- XXXXXX: 90" BRICK WITH 1/4" REINFORCING STEEL
- XXXXXX: 92" BRICK WITH 1/4" REINFORCING STEEL
- XXXXXX: 94" BRICK WITH 1/4" REINFORCING STEEL
- XXXXXX: 96" BRICK WITH 1/4" REINFORCING STEEL
- XXXXXX: 98" BRICK WITH 1/4" REINFORCING STEEL
- XXXXXX: 100" BRICK WITH 1/4" REINFORCING STEEL

**DISCLAIMER:**  
THESE PLANS HAVE BEEN PREPARED TO BE USED IN ACCORDANCE WITH THE MINIMUM REQUIREMENTS TO PROVIDE STRUCTURAL ENGINEERING SERVICES. THE ENGINEER DOES NOT GUARANTEE THE ACCURACY OF THE INFORMATION PROVIDED HEREIN NOR THE FITNESS OF THE INFORMATION FOR ANY PARTICULAR PURPOSE. THE USER OF THESE PLANS SHALL BE RESPONSIBLE FOR OBTAINING ALL NECESSARY PERMITS AND REGULATORY APPROVALS. THE ENGINEER'S LIABILITY IS LIMITED TO THE PROFESSIONAL SERVICES PROVIDED HEREIN.

**1ST LEVEL FLOOR PLAN**  
Scale - 1/4" = 1'-0"

© Back Forty Building Co.