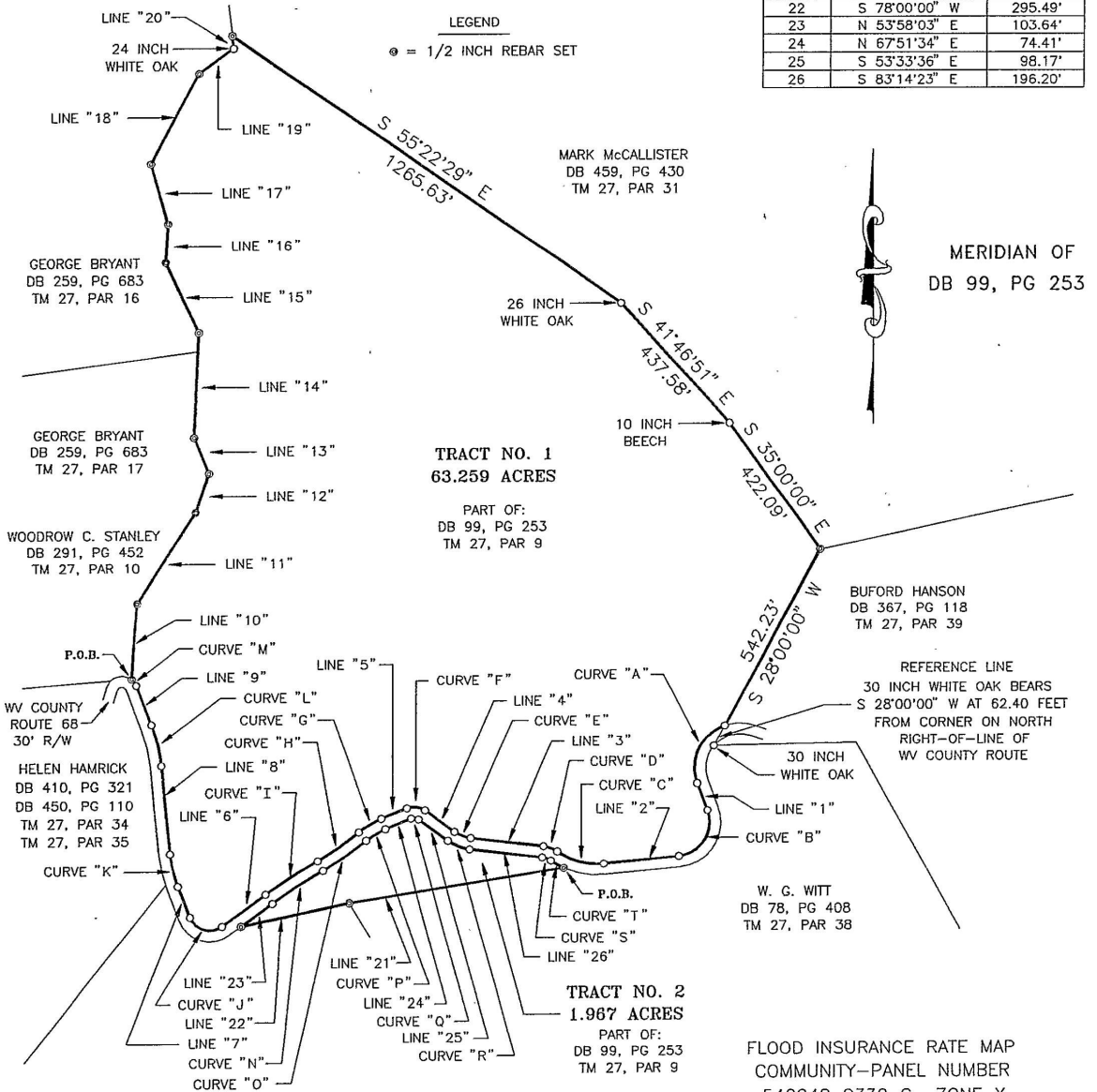


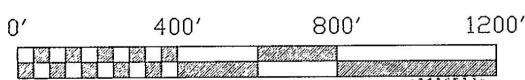
CURVE	DELTA	RADIUS	ARC	TANGENT	BEARING	CHORD
A	91°21'52" LT.	120.84'	192.69'	123.75'	S 25°06'25" W	172.91'
B	105°09'22" RT.	91.78'	168.45'	119.95'	S 32°00'10" W	145.78'
C	40°59'15" RT.	184.94'	132.30'	69.12'	N 74°55'32" W	129.49'
D	28°48'29" LT.	80.00'	40.22'	20.55'	N 68°50'09" W	39.80'
E	29°40'47" RT.	91.91'	47.61'	24.35'	N 68°24'00" W	47.08'
F	58°34'50" LT.	50.56'	51.69'	28.36'	N 82°51'01" W	49.47'
G	18°01'43" LT.	224.07'	70.51'	35.55'	S 58°50'42" W	70.22'
H	10°10'37" RT.	761.37'	135.24'	67.80'	S 54°55'09" W	135.06'
I	06°02'25" LT.	1557.54'	164.20'	82.18'	S 56°59'15" W	164.12'
J	104°36'28" RT.	56.04'	102.31'	72.52'	N 73°43'43" W	88.68'
K	15°39'59" RT.	333.44'	91.17'	45.87'	N 13°35'30" W	90.89'
L	14°47'55" LT.	451.41'	116.59'	58.62'	N 13°09'29" W	116.27'
M	29°57'45" LT.	41.59'	21.75'	11.13'	N 35°32'19" W	21.50'
N	06°02'25" RT.	1527.54'	161.04'	80.59'	N 56°59'15" E	160.96'
O	10°10'37" RT.	791.37'	140.56'	70.47'	N 54°55'09" E	140.38'
P	18°01'43" RT.	194.07'	61.07'	30.79'	N 58°50'42" E	60.81'
Q	58°34'50" RT.	20.56'	21.02'	11.53'	S 82°51'01" E	20.11'
R	29°40'47" LT.	121.91'	63.15'	32.30'	S 68°24'00" E	62.45'
S	28°48'29" RT.	50.00'	25.14'	12.84'	S 68°50'09" E	24.88'
T	10°48'59" LT.	214.94'	40.58'	20.35'	S 59°50'24" E	40.52'

LINE	BEARING	DISTANCE
1	S 20°34'31" E	77.59'
2	S 84°34'51" W	202.02'
3	N 83°14'23" W	196.20'
4	N 53°33'36" W	98.17'
5	S 67°51'34" W	74.41'
6	S 53°58'03" W	143.76'
7	N 21°25'30" W	88.21'
8	N 05°45'31" W	237.21'
9	N 20°33'26" W	114.96'
10	N 03°13'09" E	203.89'
11	N 33°15'39" E	294.13'
12	N 17°50'15" E	115.03'
13	N 22°06'05" W	105.10'
14	N 02°21'00" E	283.25'
15	N 25°10'39" W	205.41'
16	N 03°09'21" E	105.54'
17	N 15°39'09" W	166.25'
18	N 27°34'15" E	275.49'
19	N 53°18'45" E	112.97'
20	N 06°30'00" W	33.00'
21	S 81°00'00" W	582.83'
22	S 78°00'00" W	295.49'
23	N 53°58'03" E	103.64'
24	N 67°51'34" E	74.41'
25	S 53°33'36" E	98.17'
26	S 83°14'23" E	196.20'



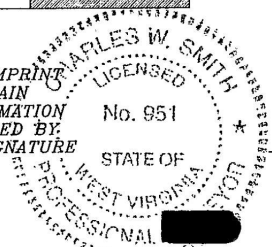
PLAT OF SURVEY
 FOR
MARK McCALLISTER

BLUE SULPHUR DISTRICT, GREENBRIER COUNTY, WEST VIRGINIA
 SCALE: 1 INCH = 400 FEET
 APRIL 17, 2000



SURVEYED: APRIL 2000 BY:
 GREENBRIER SURVEYING
 126 NORTH COURT STREET
 LEWISBURG, WEST VIRGINIA

ALL PLATS THAT DO NOT SHOW A SEAL IMPRINT AND SIGNATURE IN GREEN INK MAY CONTAIN UNAUTHORIZED ALTERATIONS. ALL INFORMATION SHOULD BE DISREGARDED UNLESS VERIFIED BY THE PROFESSIONAL SURVEYOR WHOSE SIGNATURE APPEARS.



Charles W. Smith
 Charles W. Smith
 Professional Surveyor # 951