

Bucko Ranch

320(+/-) Deeded Acres

Selling Oregon Farms & Ranches Since 1960

FOR SALE



This Eastern Oregon property is a once in a lifetime opportunity for any outdoor enthusiast as it is centrally located in the peace & quiet of southeastern Oregon. The 320 deeded acres includes a custom-built home found on the south side of the Steens Mountains near Borax Lake between Fields, OR & the Alvord Desert. The land includes views of the Trout Creek Mountains, Pueblo Mountains, Steens Mountains, all of which are home to tremendous amounts of wildlife including Bighorn sheep, pronghorn, mule deer, elk, cougar, black bear, wild horse, upland bird, & more.

The 1,663sqft home is a beautifully frame style designed yurt that is off grid with 8 solar panels on the south facing slope & a backup generator tied into 8 6V AGM batteries, installed in 2021. The home is designed for energy efficiency as it is well insulated with hardie plank siding, vinyl windows, & composite roof. A stamped front patio provides a peaceful place with panoramic views of Steens Mountains.

Inside, the entirety of the home is engulfed in tile flooring with an open concept. Windows invite natural lighting with tung n groove pine vaulted ceilings reaching 17ft in height with a skylight. The kitchen has marble tiled countertops & hickory cabinets that complement the rest of the home well. Large amounts of storage space with overhead cabinetry includes a BI dishwasher, range, vented microwave, & refrigerator.

The 3 bedrooms found in the home each have ceiling fans & a deep closet space. Two bedrooms have a shared bathroom with a tile tub, large vanity space & silestone countertops. The master suite bathroom has a ¾ bathroom with a walk-in shower, additional storage is in a towel closet & overhead storage above the toilet.

A laundry space is located off the kitchen with additional storage for a pantry, sink, & two tankless on demand water heaters. One of the water heaters is tied into the radiant floor heat while the other is for the water sources in the home, both are propane heated. The batteries for the solar is located off the front entrance where it entails detailed information on how to operate the system along with the backup generator.

The home is on a well & there is a second one on the premises that could be utilized for livestock. Outside of the home is a seasonal pond for wildlife. The home is fenced off & there is a perimeter fence to the west boundary to prevent livestock from intruding.



Surrounding Area

The Steens Mountain & Alvord Desert are the two more notable landmarks in the region. The Steens Mountains are known for its extreme canyons & ample wildlife. One of the tallest mountains in Oregon at 9,700ft, it features water sources of the Blitzen River, Donner River, Mann Lake, Wildhorse Lake, & Fish Lake. Backpacking trails & horseback trails can be found throughout the area with sites of old mines, water features, & wildlife. The eastern side of the mountain plunges nearly 5000 feet in three miles to the Alvord desert. The dried-up lakebed that spans 12x7 miles featuring hot springs & extreme flatness. The Playa offers wind surfing, a spot for landing small aircrafts & currently holds the women's land speed record of 522mph.

The acreage qualifies for LOP tags & is surrounded by some of the better hunting in the state for mule deer, bighorn sheep, upland bird, & pronghorn. The Steens units & Hart Mountain unit are the two most demanded for pronghorn in the state. Bighorn sheep are extremely limited across the entire state but can be found in the Pueblo Mountains & Steens Mountains. Mule deer hunting in the Steens are well known but for trophy bucks the Trout Creek Mountains is one of the most demanded across the state. With the high desert & extreme drainages, the area is well known for various upland birds such as chukars, quail, & grouse.



Other species of animals can be found throughout the region. North of this property you can reach the Malheur Wildlife Refuge that is a safe haven for hundreds of animal species over the 187,000 acres. Bird watchers come across the United States to participate in the Harney County Migratory Bird Festival that is held in the refuge region where many birds pass through for the Pacific Flyway. On the Steens Mountains are hundreds of wild horses that are found frequently along the Steens Loop Road.

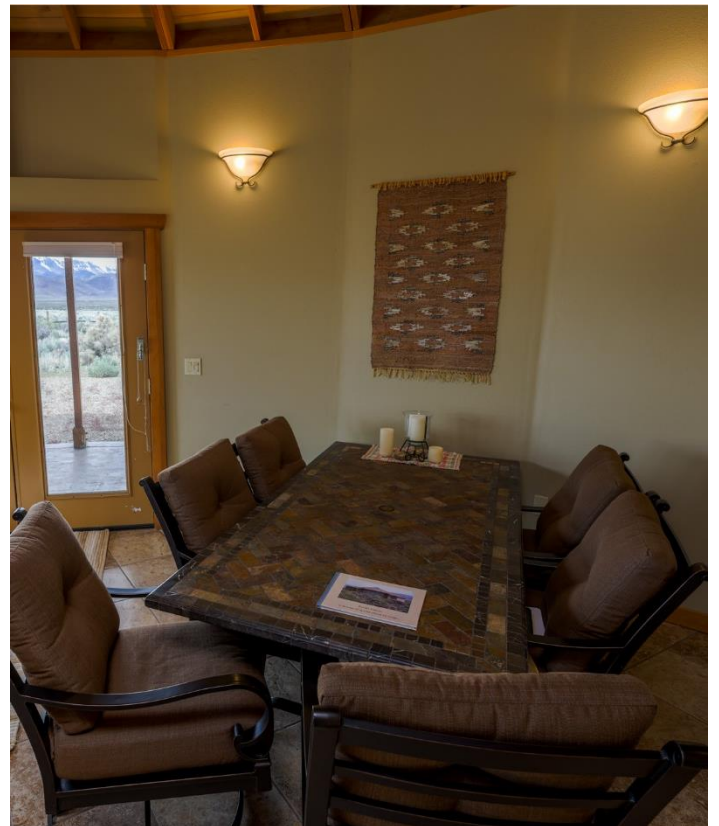
In an article published by Oregon Live in 2019, the two best star gazing places in the entire states are located on the Alvord Desert & Steens Mountains. Being very isolated, the nearest community is Fields. The Fields Station sells gas, groceries & is a great place to grab a warm bite to eat or its 'Worlds Famous Milkshake'.

With plenty of wildlife in the area, it also has expansive recreational opportunities & uniqueness. Mountain bike trails can be found in the foothills and mountains while ATV trails can be found throughout the high desert. Borax Lake is known for its geothermal wells having recorded temperatures of 300+ degrees, this known area is only a mile from the property boundary. Additional to the Borax Lake well, there are hot springs throughout the area on the Alvord, Borax, Mickey, Willow Springs, Hart Mtn, etc.

This extraordinary property in Eastern Oregon presents a rare opportunity for outdoor enthusiasts, boasting 320 acres, and a custom built off grid yurt. Surrounded by wildlife & recreation in every direction, each day is its own adventure!













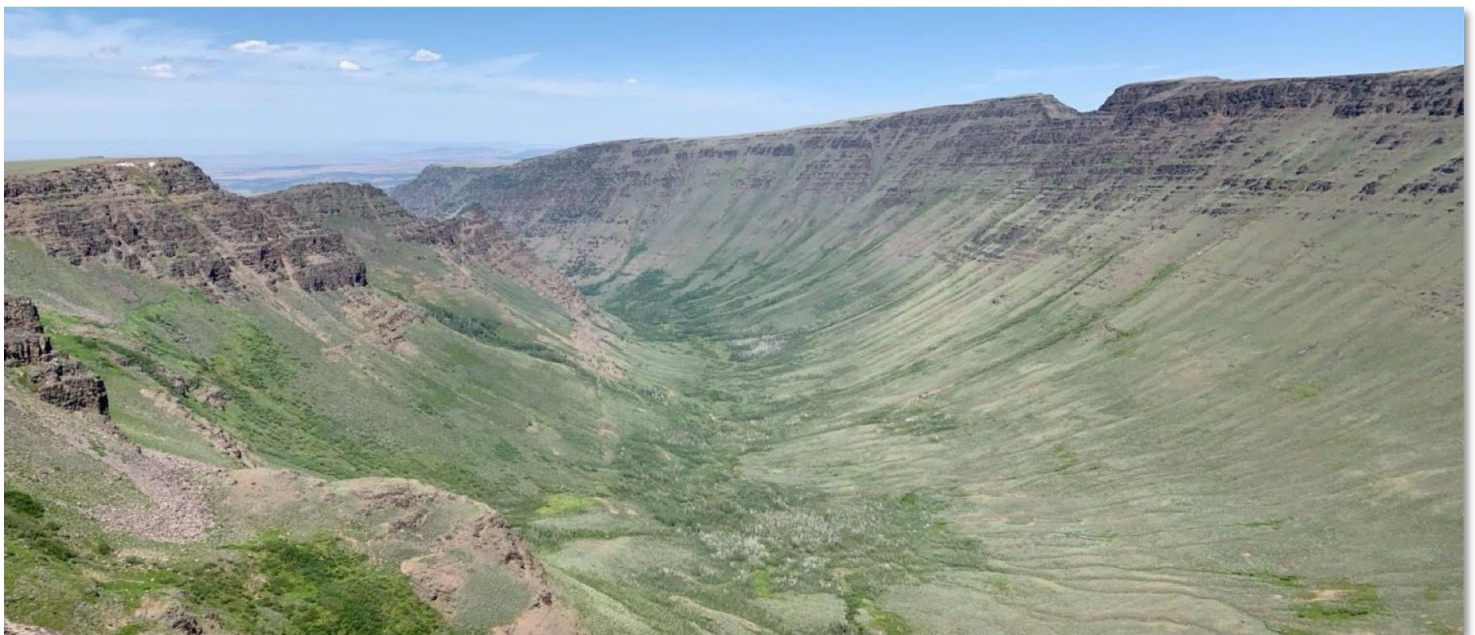


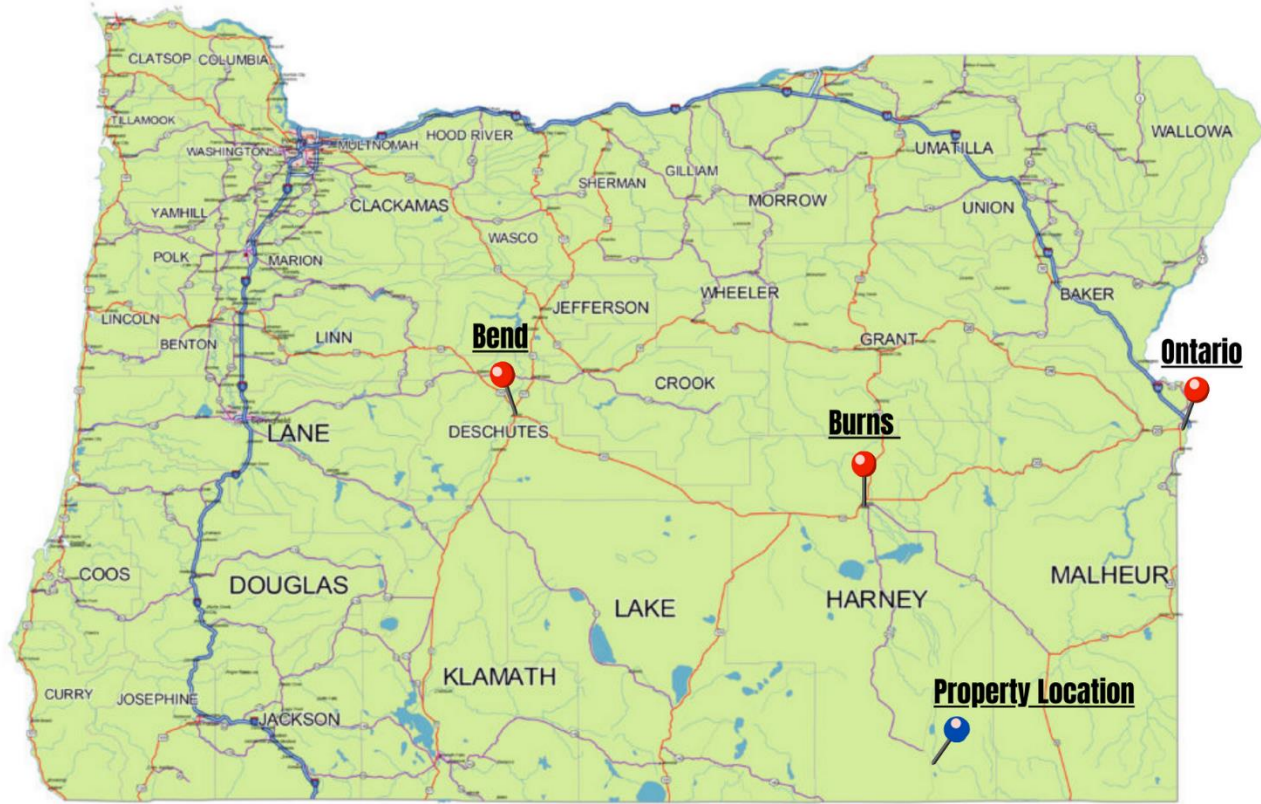


Surrounding Area

Harney County, located in the expansive high deserts of rural Eastern Oregon, ranks as the 10th largest county in the United States, encompassing over 10,000 square miles. This vast area boasts diverse landscapes and abundant wildlife. At the southern tip of the county, one can marvel at the stunning vistas of Steens Mountain, which oversees the Alvord Desert & Trout Creek Mountains. The northern region features the Malheur National Forest, Silvies River, & timber country.

Wildlife abounds, ranging from large game such as elk, pronghorn, & mule deer to a variety of smaller critters and bird species typical of the Pacific Northwest. The county's primary community, Burns, is situated midway between Central Oregon & the Idaho Border. A two-hour trip to the west leads to Bend, while two hours east reaches the Idaho border and the Treasure Valley.





Location

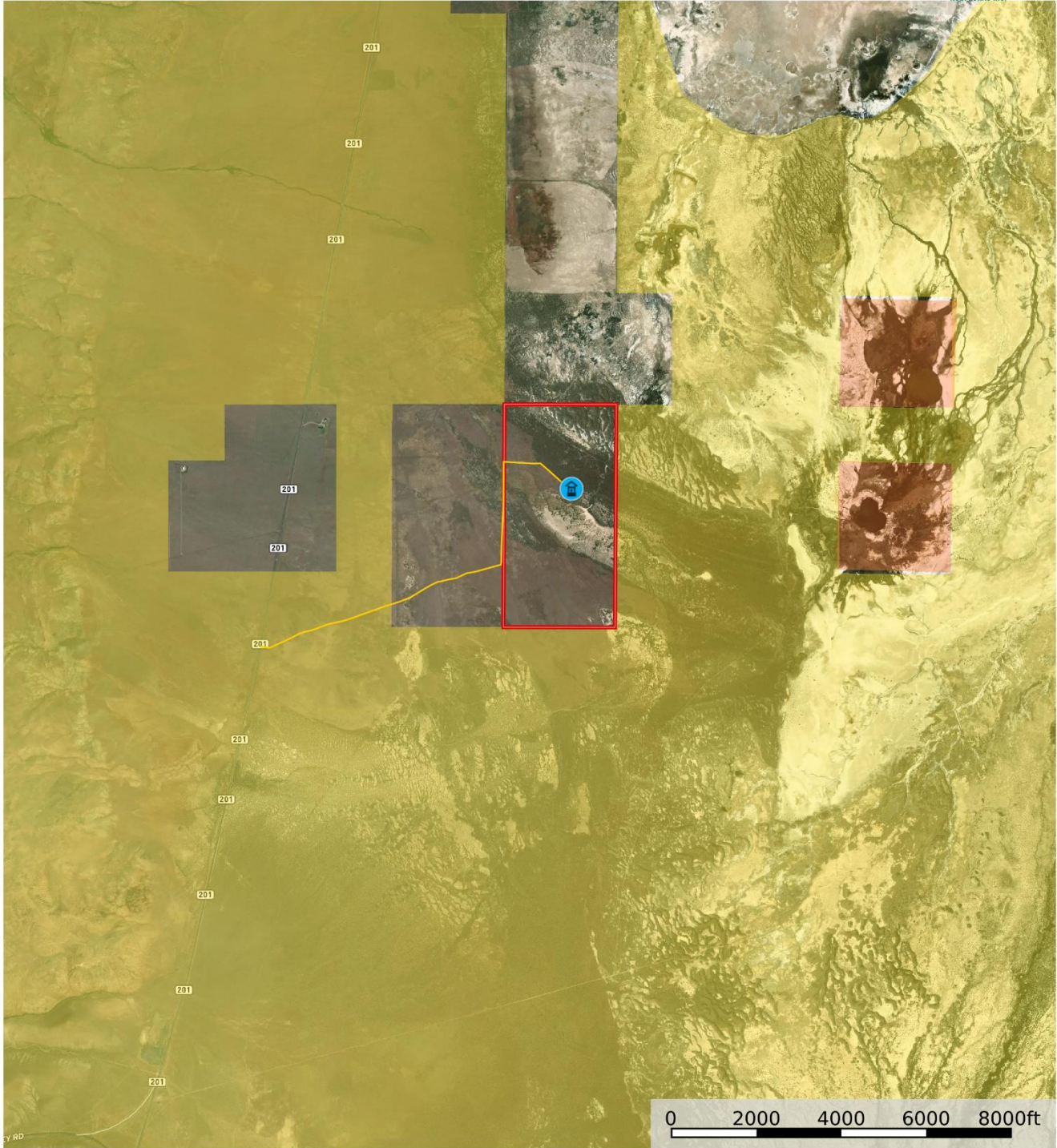
Burns Oregon: <https://www.cityofburnsor.gov/>
2 hour 15 min (118.2 mi)
Population: 4,422 (2021)

Ontario Oregon: <https://www.ontariooregon.org/>
4 hour (215.5 mi)
11,626 (2021)

Bend Oregon: <https://www.bendoregon.gov/>
4 hour 31 min (248.5mi)
102,059 (2021)



Branciforte
 Oregon, 320 AC +/-



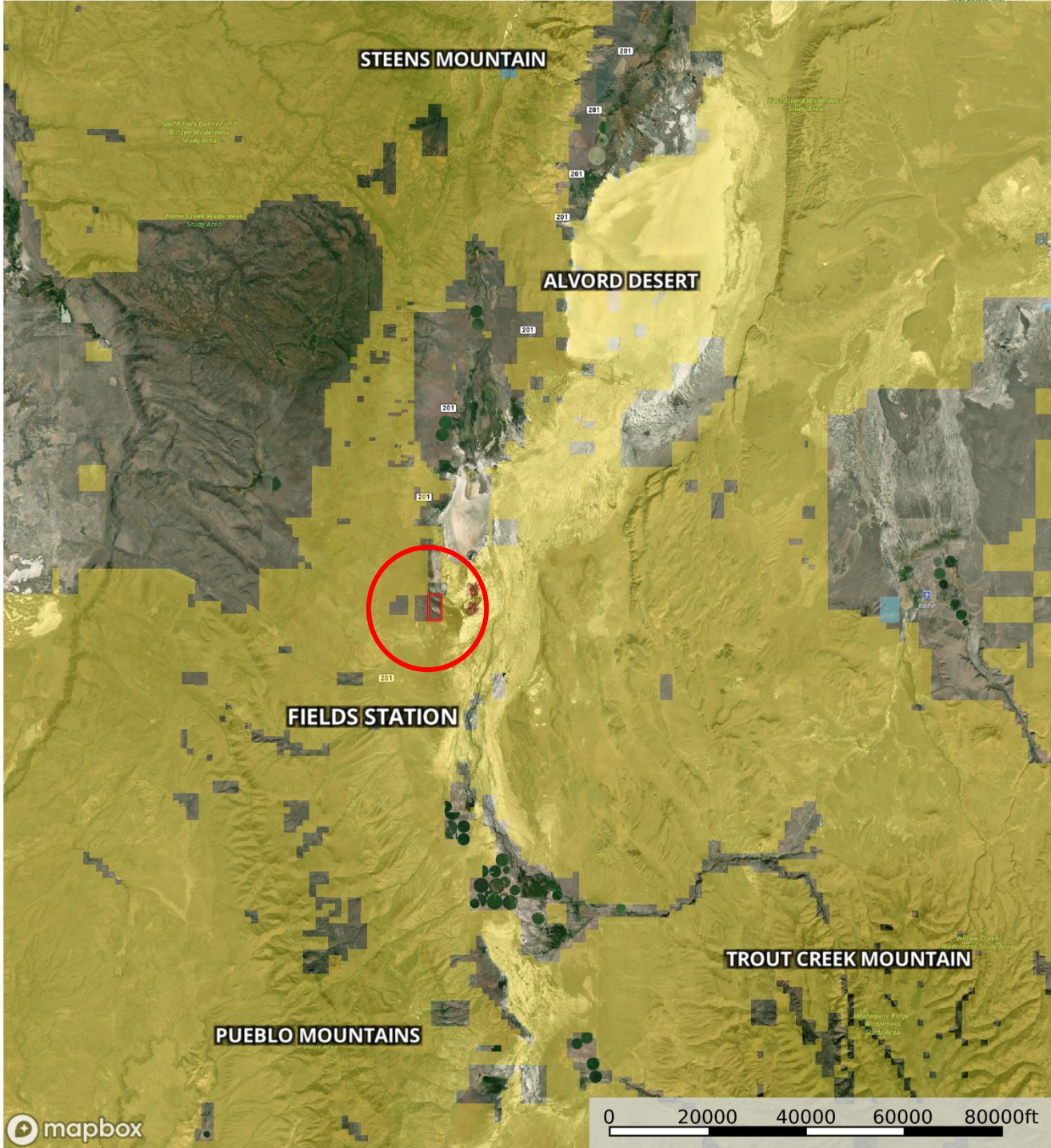
- Well
- Primary Road
- Boundary
- Forest Service
- State Land
- Fish and Wildlife
- National Park
- Other
- BLM
- Local Government

United County Jett Blackburn Real Estate (map for illustration purposes only)
 P: 541-413-5660 www.jettblackburn.com 707 Ponderosa Village, Burns, OR 97720

id. The information contained herein was obtained from sources deemed to be reliable. Land id™ Services makes no warranties or guarantees as to the completeness or accuracy thereof.



Branciforte
 Oregon, 320 AC +/-



- ▭ Boundary
- ▭ Forest Service
- ▭ State Land
- ▭ Fish and Wildlife
- ▭ National Park
- ▭ Other
- ▭ BLM
- ▭ Local Government

United County Jett Blackburn Real Estate (map for illustration purposes only)
 P: 541-413-5660 www.jettblackburn.com 707 Ponderosa Village, Burns, OR 97720

id. The information contained herein was obtained from sources deemed to be reliable. Land ID™ Services makes no warranties or guarantees as to the completeness or accuracy thereof.



ADDRESS:	26365 E. Steens RD, Princeton, OR 97721
TAX LOT MAPS:	37S33E00-00-00700
ACREAGE:	320+/- Deeded Acres – Per County Records
YEAR BUILT:	2007
SQ.FT.:	1663
BEDROOMS:	3
BATHROOMS:	1¾
HEAT SOURCE:	Radiant floor heat
APPLIANCES:	Refrigerator, dishwasher, range, microwave
UTILITIES:	Power – Off grid w/ solar & backup generator Private Well Private Septic
TAXES:	\$1,756.43
PRICE:	\$850,000.00



United Country Jett Blackburn Real Estate

Jett Blackburn Real Estate Inc. is an independently owned brokerage franchised under United Country. First opened in 1960, Jett Blackburn Real Estate has been the oldest standing firm in their area specializing in sales of farms, ranches, hunting properties, recreational, & more. Curt Blackburn is the current owner & principal broker of Jett Blackburn Real Estate.

United Country is a franchise-based real estate marketing company that has shown tremendous success in the real estate industry for the last 95 years. Throughout the entire United States, UC has sold over 2.8 million acres in 2022 alone, with \$9.9 billion in sales all together that covered a majority of recreational, farms, & ranches. To help make these sales possible UC has a comprehensive marketing program that includes printed advertising and special property marketing websites for farms & ranches. These marketing sites include Western Livestock Journal, Land & Farm, Capital Press, Lands of America, Farm & Ranch, Lands.com, SPG's, and much more. They are partnered with Realtree United Country Hunting Properties & UC Ranch

Presented By



Curt Blackburn

curt@jettblackburn.com

(541)413-5777



Jake Blackburn

jake@jettblackburn.com

(541)413-5774