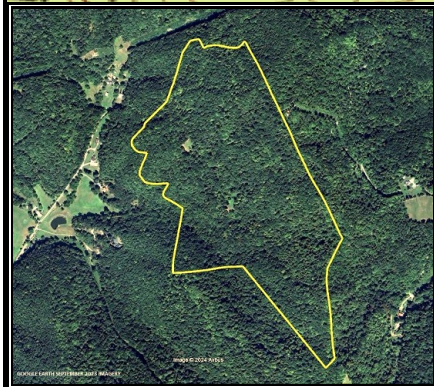
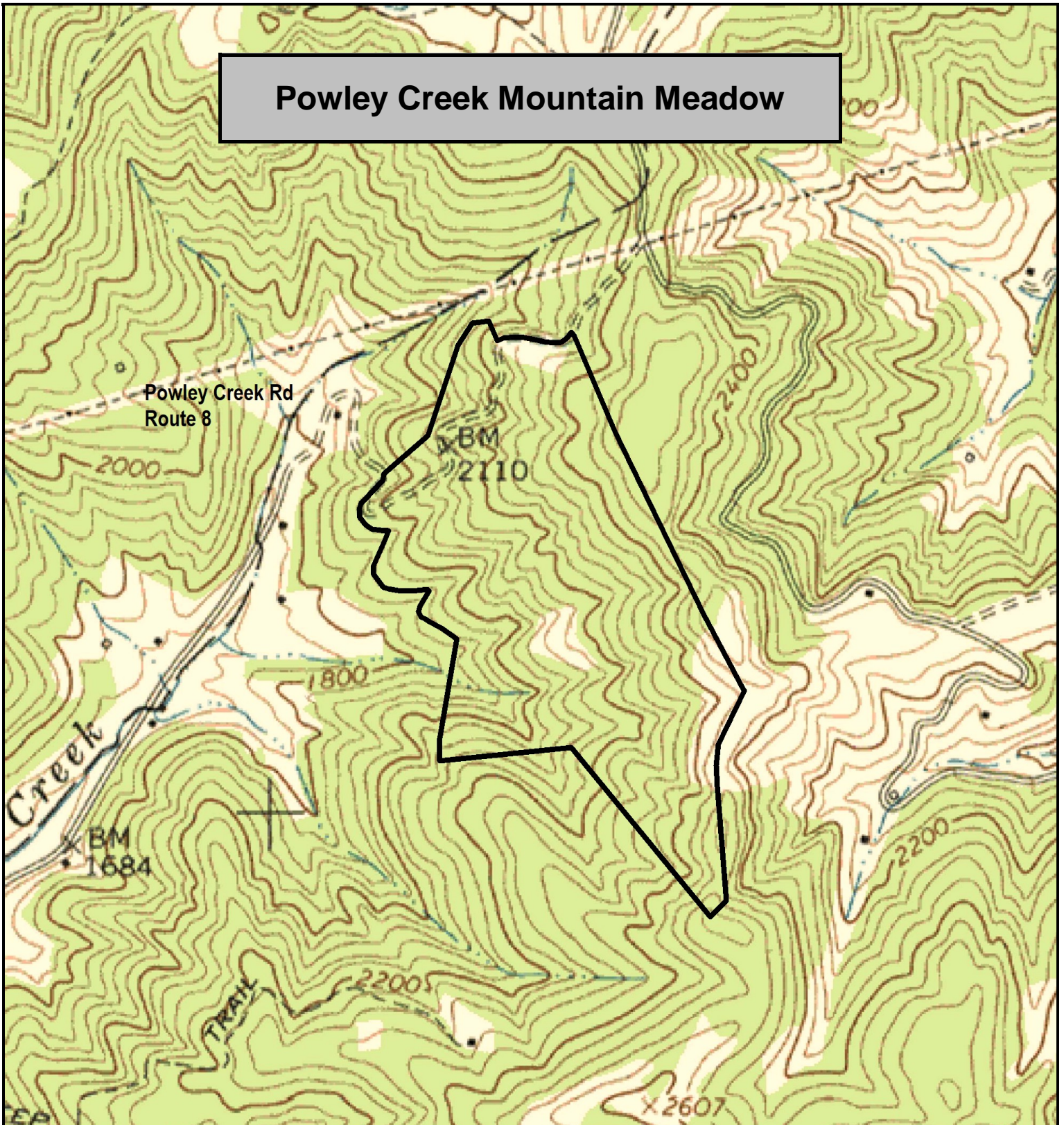


# Powley Creek Mountain Meadow



Powley Creek Mountain Meadow, Summers County, WV

TOPOGRAPHIC MAP

Elevation Range: 1910' - 2517' +/-

Google Coordinates: LAT 37.672325 (N), LON -80.789070 (W)

This map is for general location purposes only. Consult a licensed land surveyor for actual boundary location and acreage.  
PROPERTY DEPICTION WAS DERIVED FROM SURVEY INFORMATION.

FOR TOPO MAP

SCALE 1:9600

1 INCH = 800 FT.

