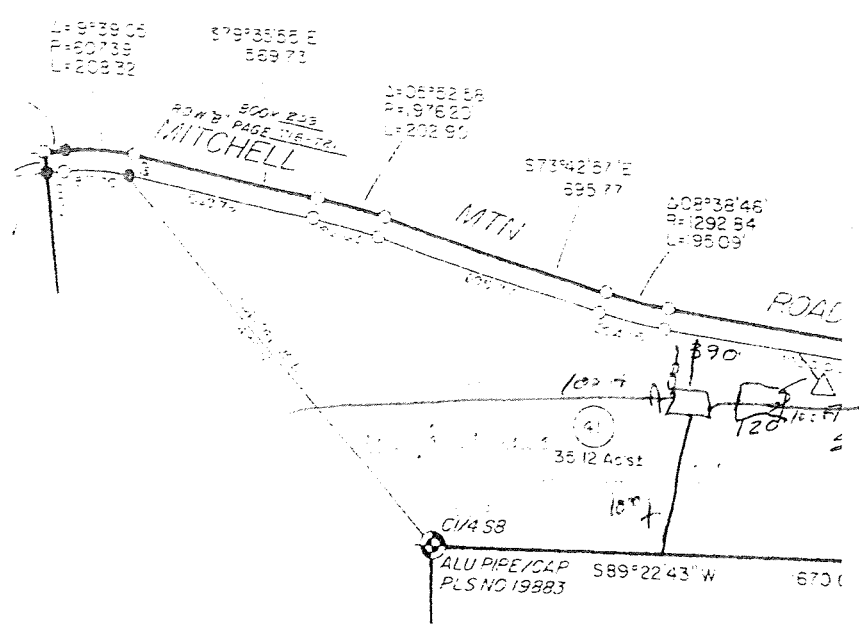






STATE OF MICHIGAN  
 DEPARTMENT OF LAND AND NATURAL RESOURCES  
 DIVISION OF GEOLOGICAL SURVEY

Loading Shed



BEARING AND DISTANCE  
 MEASURED IN FEET FROM SURFACE DOWNWARD  
 CENTER OF GRAVITY EXPOSED WITH SURFACE  
 1/24" SCALE  
 MARK SPACING 1/2" (1/4" TO 1/2")  
 1/16" DIA.  
 1/8" DIA.  
 1/4" DIA.  
 3/8" DIA.  
 1/2" DIA.  
 3/4" DIA.  
 1" DIA.

