

Summary



Saunders, NE • Township: Ashland • Location: 12-12N-9E

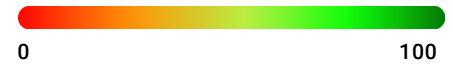
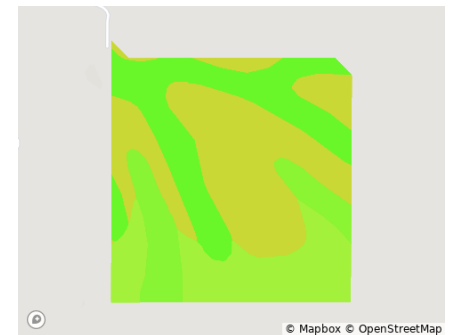
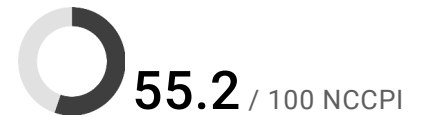
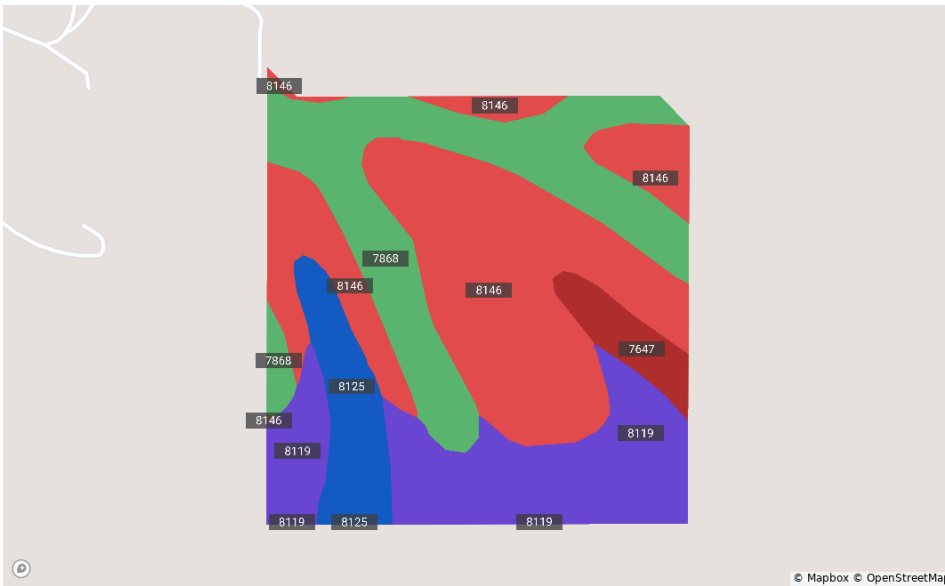
40.00 acres, 1 selection

Overview

Selections	Acres	Parcel ID Number	
1	40.00	003224000	[Redacted]



Soils



Code	Soil Description	Acres	% of Field	Non-IRR Class	IRR Class	NCCPI
8146	Pohocco-Pahuk complex, 11 to 17 percent slopes, eroded	16.5	41.3%	6e	—	47
7868	Nodaway silt loam, channeled, occasionally flooded	10.1	25.4%	6w	—	65

See full report for all soil data

Overview 40.00 acres, 1 selection



Saunders, NE • Township: Ashland • Location: 12-12N-9E

Type: Parcel



Acres
40.00

Parcel ID Number
003224000

Property Address
—

██████████

██████████

████████████████████

████████████████████

████████████████████

████████████████

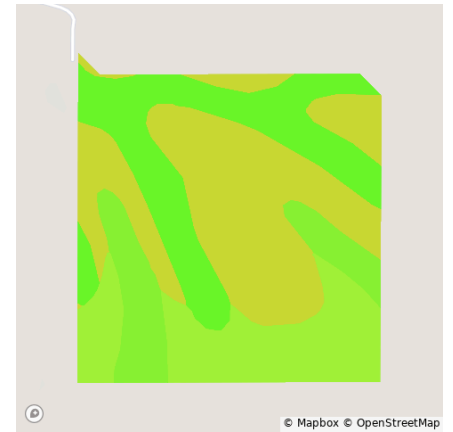
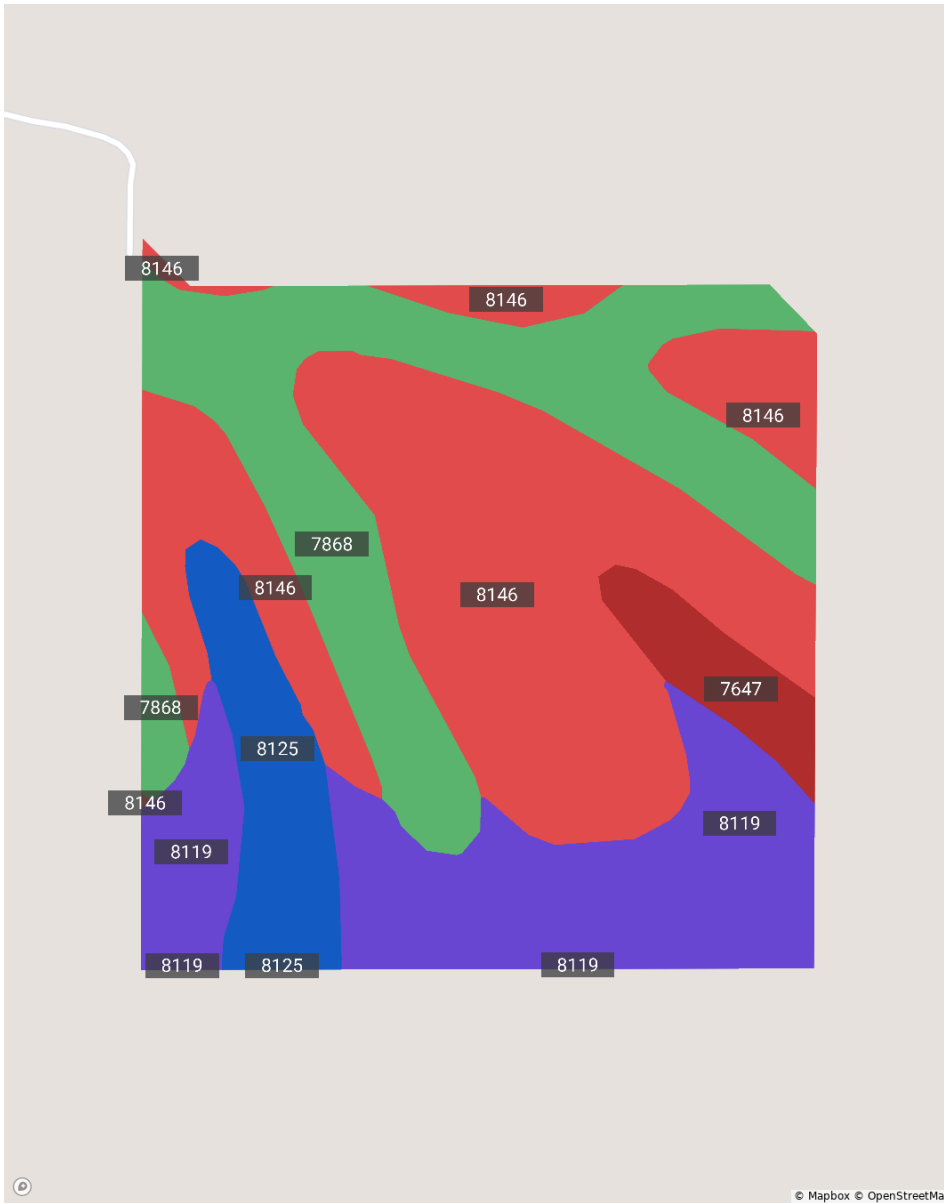
████████████████████

Soils

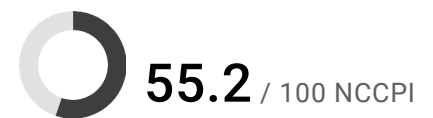


Saunders, NE • Township: Ashland • Location: 12-12N-9E

40.00 acres, 1 selection



Quality Gradient • NCCPI



Code	Soil Description	Acres	% of Field	Non-IRR Class	IRR Class	NCCPI
● 8146	Pohocco-Pahuk complex, 11 to 17 percent slopes, eroded	16.5	41.3%	6e	—	47
● 7868	Nodaway silt loam, channeled, occasionally flooded	10.1	25.4%	6w	—	65

Soils



Saunders, NE • Township: Ashland • Location: 12-12N-9E

40.00 acres, 1 selection

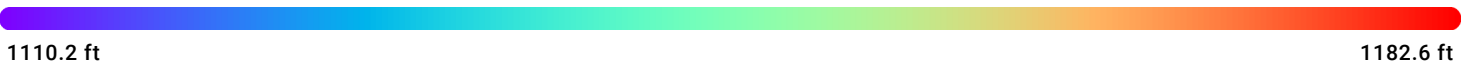
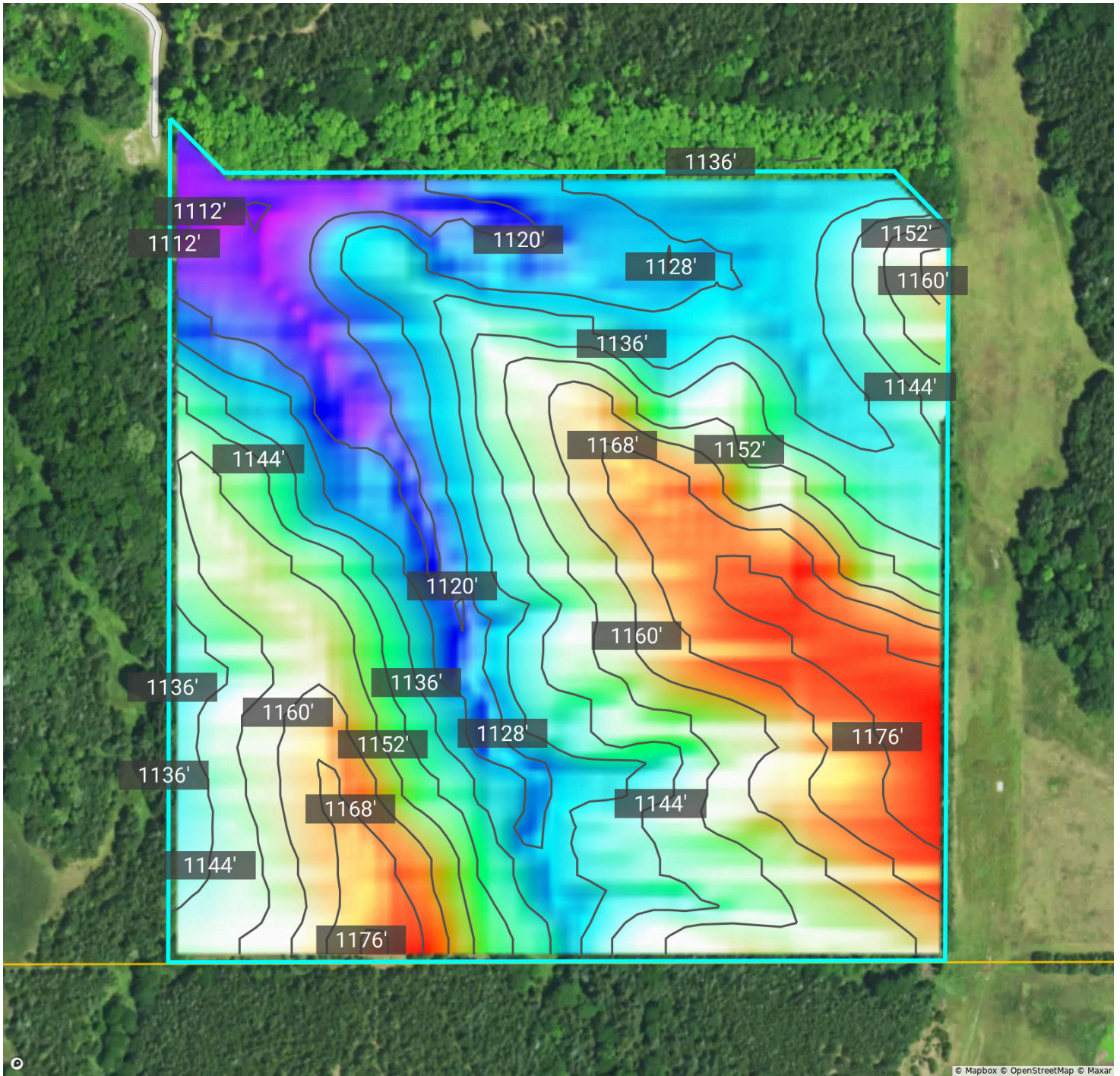
Code	Soil Description	Acres	% of Field	Non-IRR Class	IRR Class	NCCPI
● 8119	Pohocco silty clay loam, 11 to 17 percent slopes, eroded	8.6	21.7%	4e	—	57
● 8125	Pohocco silty clay loam, 6 to 11 percent slopes, eroded	3.1	7.7%	3e	4e	61
● 7647	Yutan, eroded-Aksarben silty clay loams, 2 to 6 percent slopes	1.6	3.9%	2e	3e	60

Elevation



Saunders, NE • Township: Ashland • Location: 12-12N-9E

40.00 acres, 1 selection



Source: USGS 3 Meter Dem

Interval: 8.0 ft

Range: 72.4 ft

Min: 1110.2

Max: 1182.6

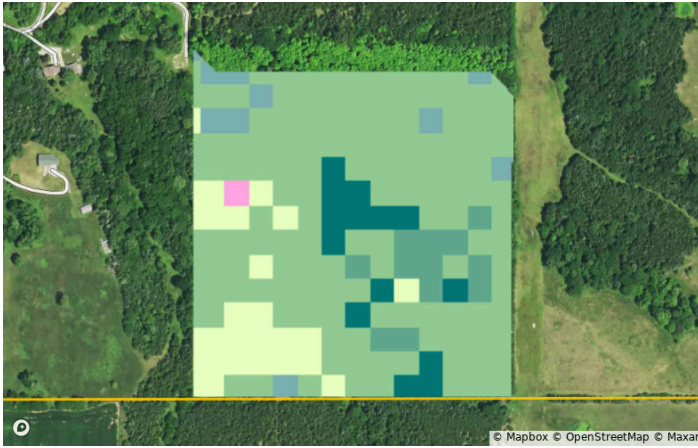
Crop History



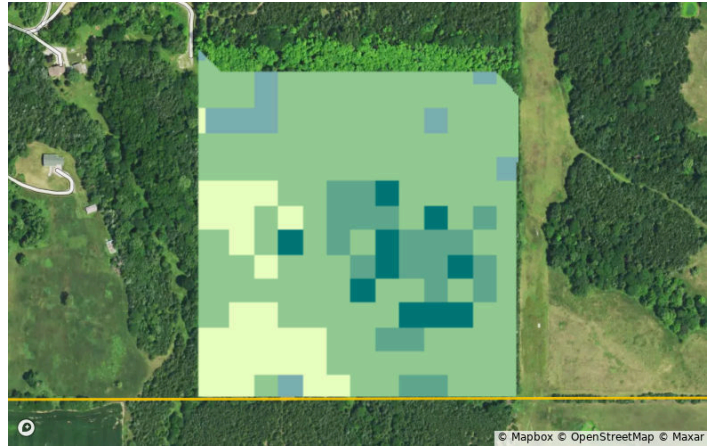
Saunders, NE • Township: Ashland • Location: 12-12N-9E

40.00 acres, 1 selection

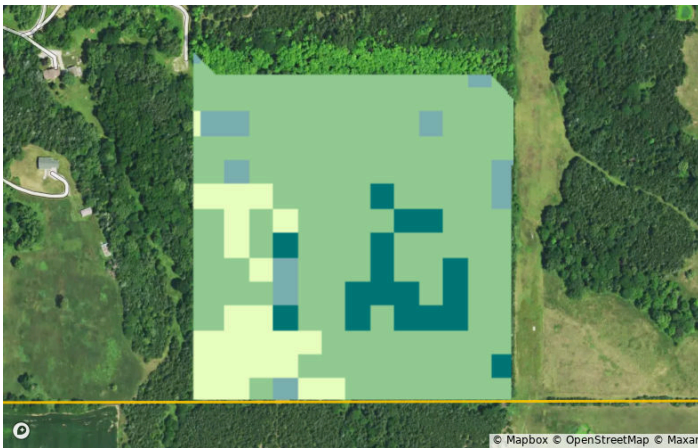
2023



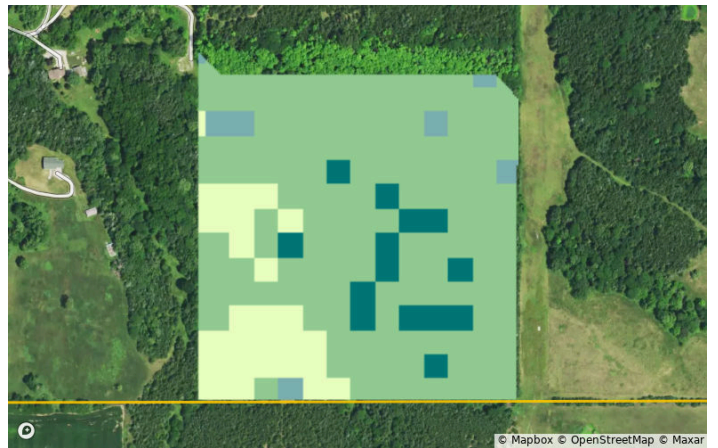
2022



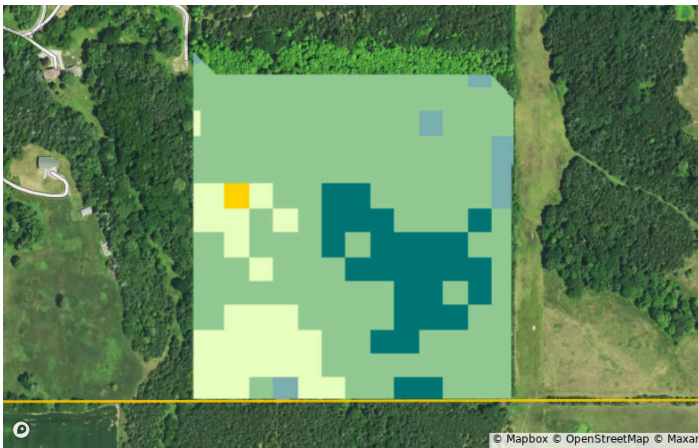
2021



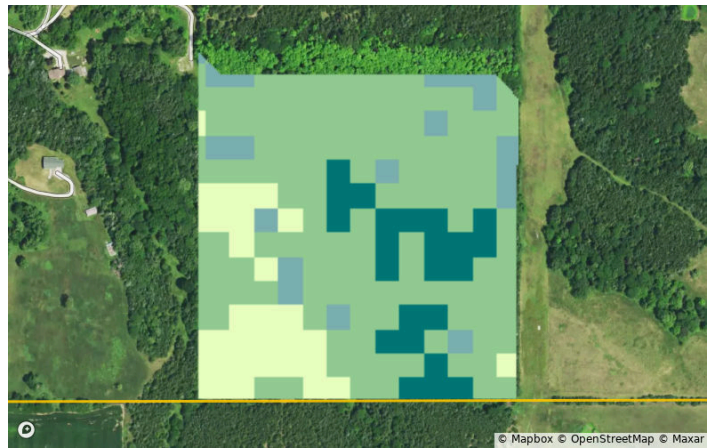
2020



2019



2018



Crop History



Saunders, NE • Township: Ashland • Location: 12-12N-9E

40.00 acres, 1 selection

All Selections



Crop	2023	2022	2021	2020	2019	2018
Deciduous Forest	67.8%	64.1%	71.8%	73.8%	66.8%	63.0%
Grassland/Pasture	12.7%	14.4%	13.1%	15.0%	14.4%	15.4%
Evergreen Forest	7.8%	5.8%	9.8%	8.1%	15.3%	12.9%
Other	5.0%	4.5%	5.3%	3.1%	3.5%	8.7%
Mixed Forest	6.8%	11.2%	0.0%	0.0%	0.0%	0.0%

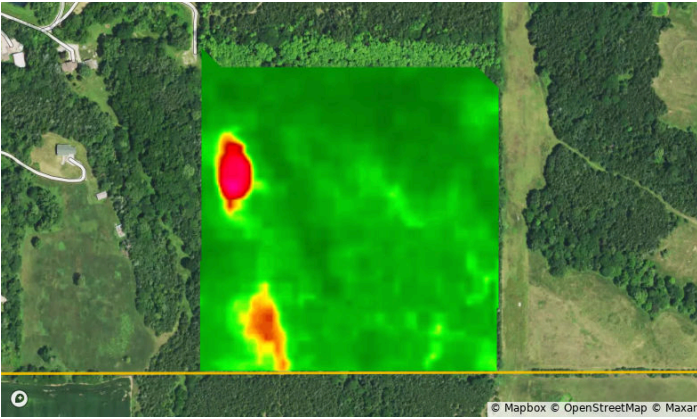
Vegetation Index (NDVI)



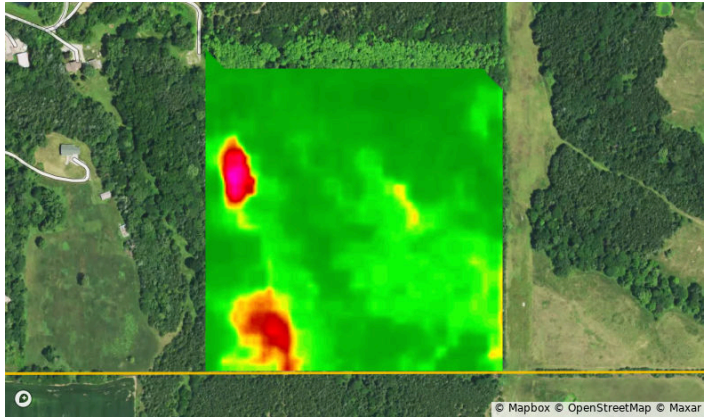
Saunders, NE • Township: Ashland • Location: 12-12N-9E

40.00 acres, 1 selection

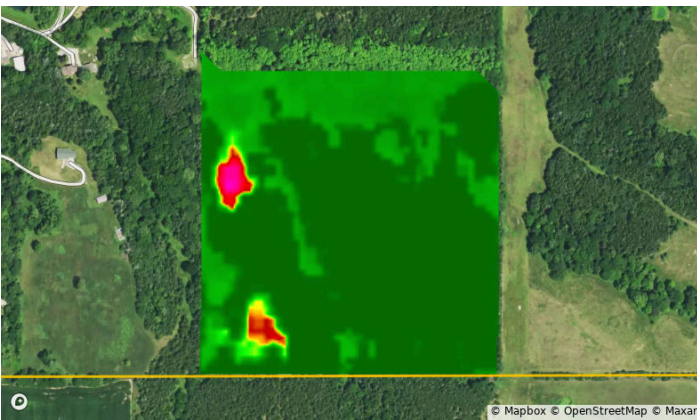
2023



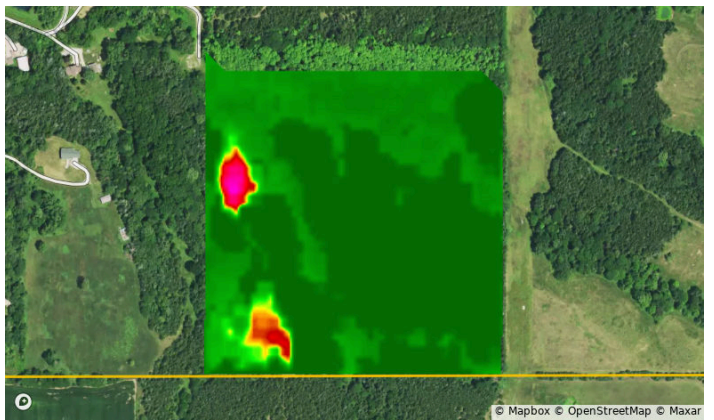
2022



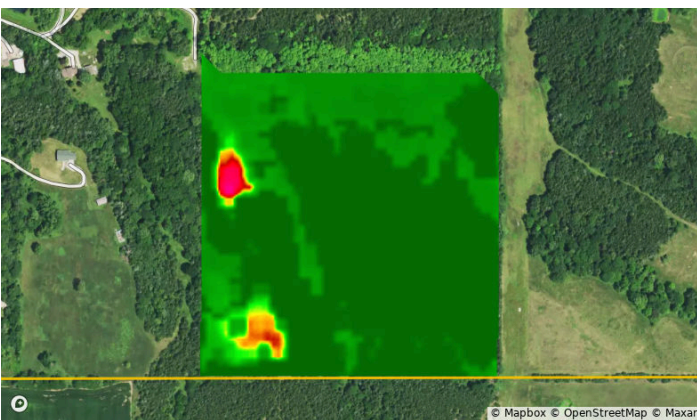
2021



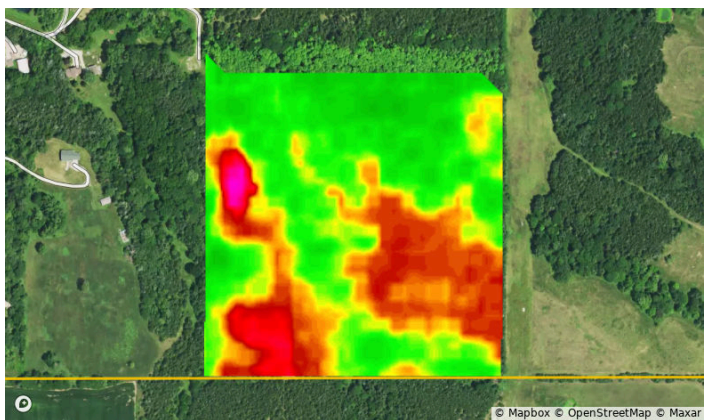
2020



2019



2018



Vegetation Index (NDVI)



Saunders, NE • Township: Ashland • Location: 12-12N-9E

40.00 acres, 1 selection

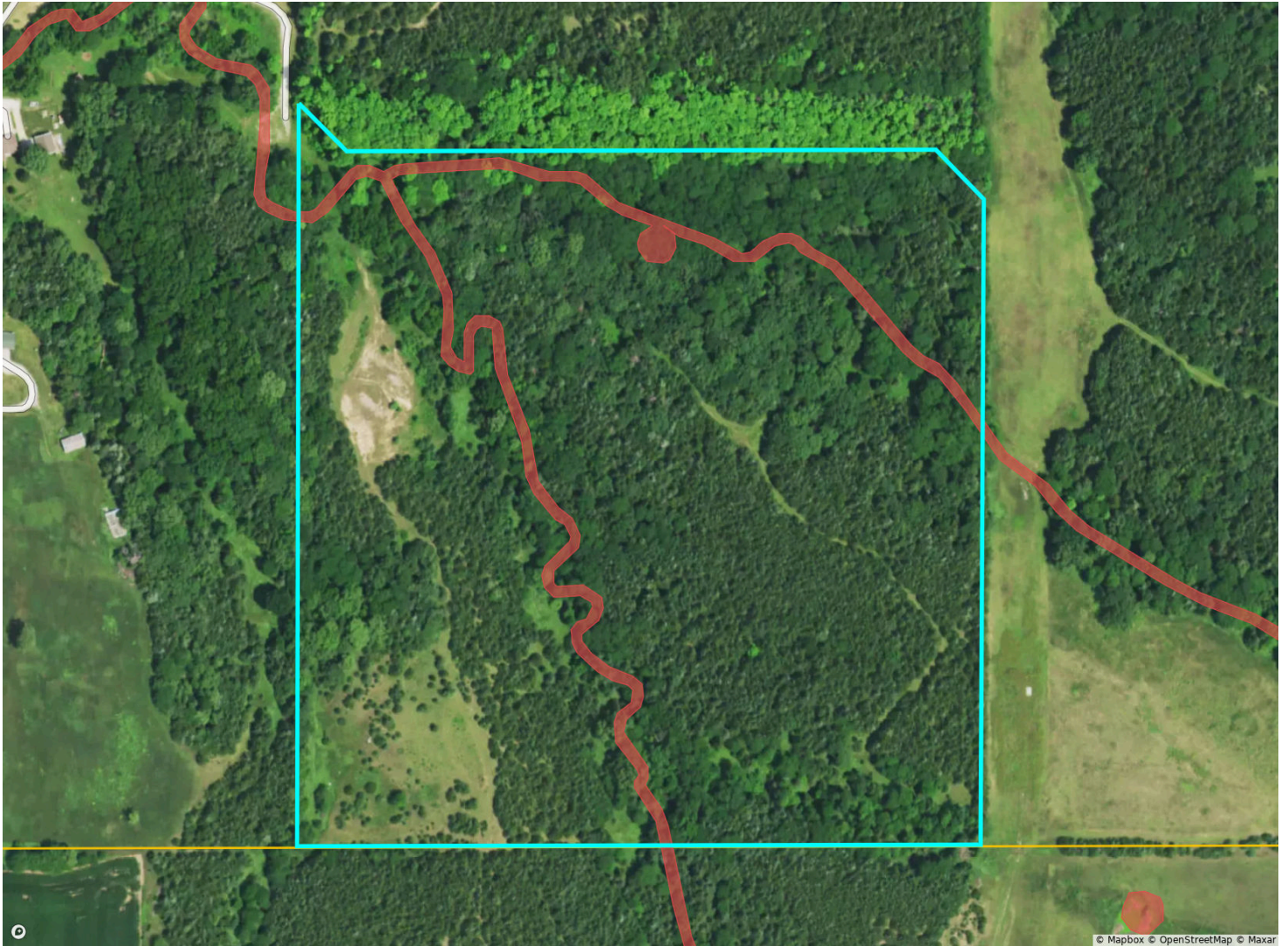
Year	2023	2022	2021	2020	2019	2018
Standard Deviation	7	6	7	8	7	7
Mean	87	84	96	95	96	75
Min	47	42	43	42	47	43
Max	98	92	100	100	100	85

Flood (FEMA Report)



Saunders, NE • Township: Ashland • Location: 12-12N-9E

40.00 acres, 1 selection



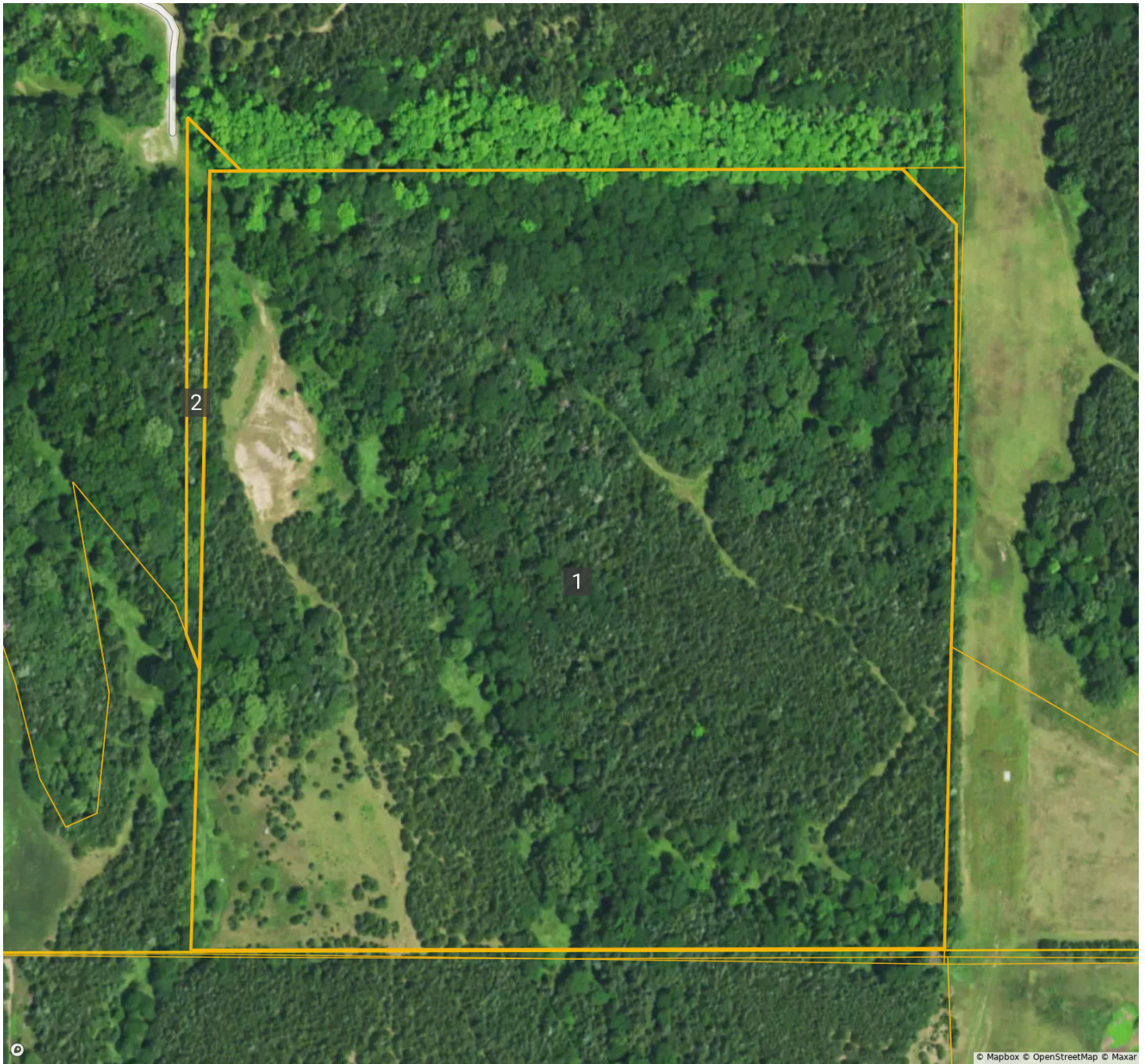
Flood Hazard Zone	% of Selection	Acres
● 100 Year Flood Zone (1% annual chance of flooding)	0.0%	0.0
● 500 Year Flood Zone (0.2% annual chance of flooding)	0.0%	0.0
● Regulatory Floodway	0.0%	0.0
○ No Flood Hazard Zone	100.0%	39.8
Wetlands		
	% of Selection	Acres
● Assorted Wetlands	4.1%	1.6

FSA Overview



Saunders, NE • Township: Ashland • Location: 12-12N-9E

40.00 acres, 1 selection



CLU	Acres
1	38.84
2	0.68

Historical Imagery



Saunders, NE • Township: Ashland • Location: 12-12N-9E

40.00 acres, 1 selection

2022



2020



2018



2016



2014



2012

