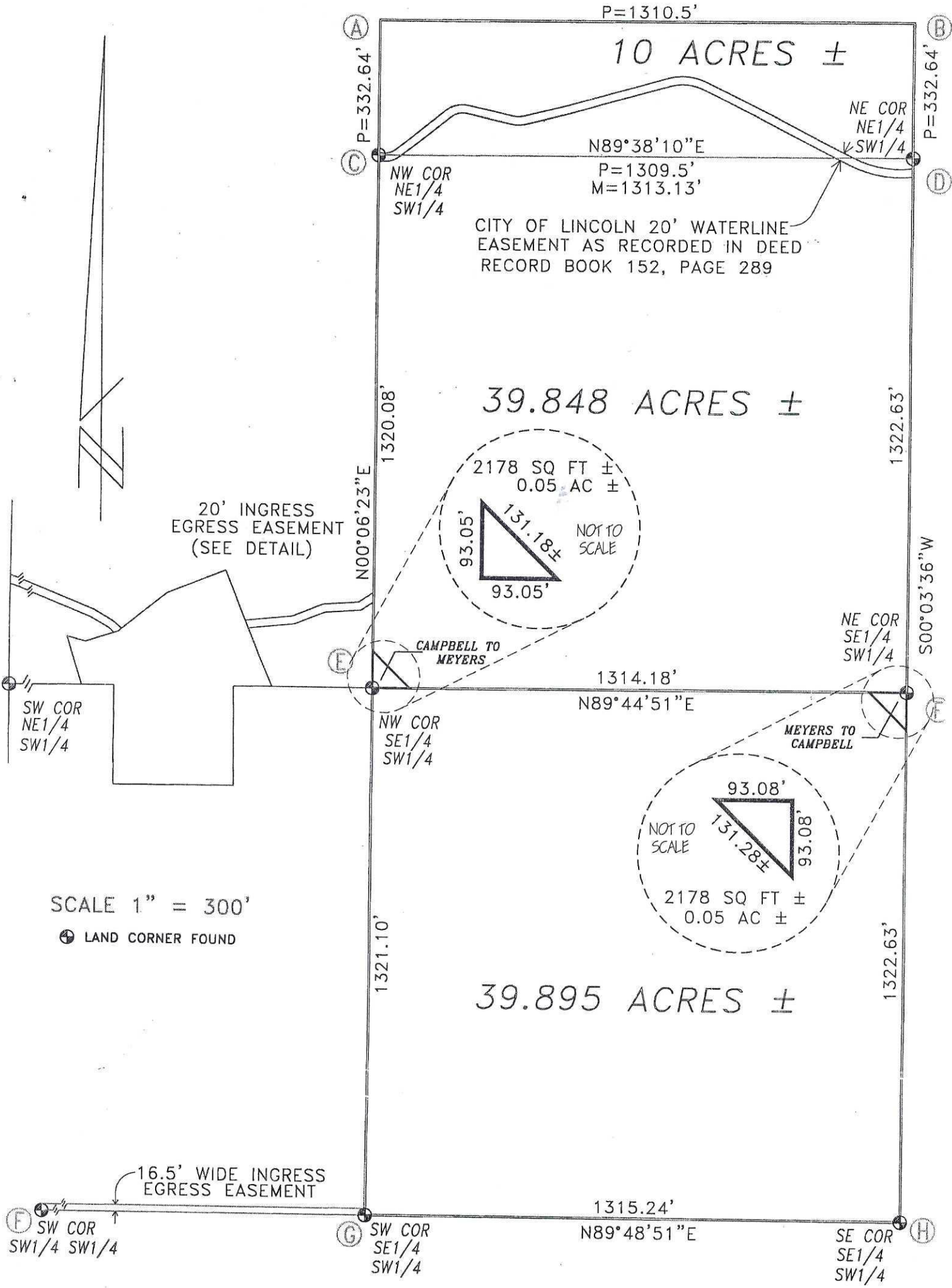


SURVEY FOR WILLIAM MEYERS
 IN SECTION 12 T12N R9E OF THE 6TH PRINCIPAL MERIDIAN, SAUNDERS COUNTY, NEBRASKA.



SCALE 1" = 300'
 ⊕ LAND CORNER FOUND

COPY

SIGNED THIS 18TH DAY OF JUNE 1993

SAUNDERS COUNTY SURVEYOR
 COURTHOUSE

LOUIS L. AUSTIN L.S. 309

WAHOO NE 68066