

23.5 ACRES

Approval is hereby granted for lots 1-9, 12, 13, 14, 16 defined as Clear Creek Estates Phase III, Rocke County, Tennessee, as being suitable for subsurface sewage disposal (SSD) with the listed or attached restrictions.

Prior to any construction of a structure, mobile or permanent, the plans for the exact house/structure location must be approved and an SSD system permit issued by the Division of Ground Water Protection. Water taps, water lines, underground utilities and driveways should be located at the side property lines unless otherwise noted. Any cutting filling or alterations of the soil conditions may void this approval."

Shari Weathers 3/22/99  
Environmental Specialist Date  
Division of Ground Water Protection

perc. test  
4/22/99 gw

lots 1, 2, 3, 4, 6, 7, 9<sup>8, 13, 16</sup> are approved Under T.C.A. 68-221-401(c)  
to serve a maximum of three bedrooms.

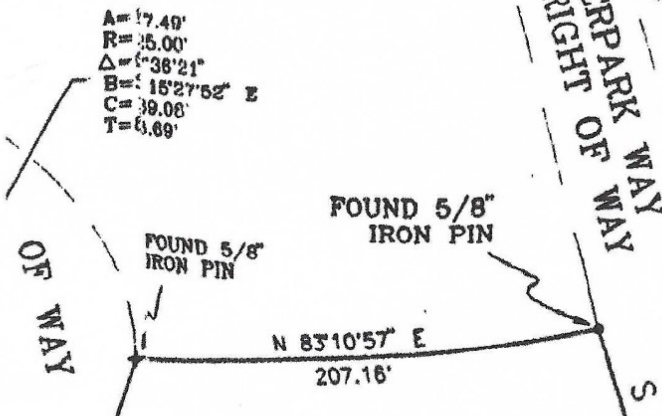
\* lots 5, 12, 16<sup>15</sup> are approved Under T.C.A. 68-221-401(c)  
to serve a maximum of two bedrooms.

\* lots 8, 13, 14 are approved Under T.C.A. 68-221-401(c)  
to serve a maximum of one bedroom.

\* lots 10, 11, 15 are not approved for subsurface sewage disposal at this time.

The shaded areas on Lots 2, 3, 5, 6, 7, 8, 9, 12, 13, 14 are reserved for field line use only. Any 10, 15 ft. distance in these areas may void the approval.

House size design and location will determine the actual number of bedrooms for which a permit may be issued.

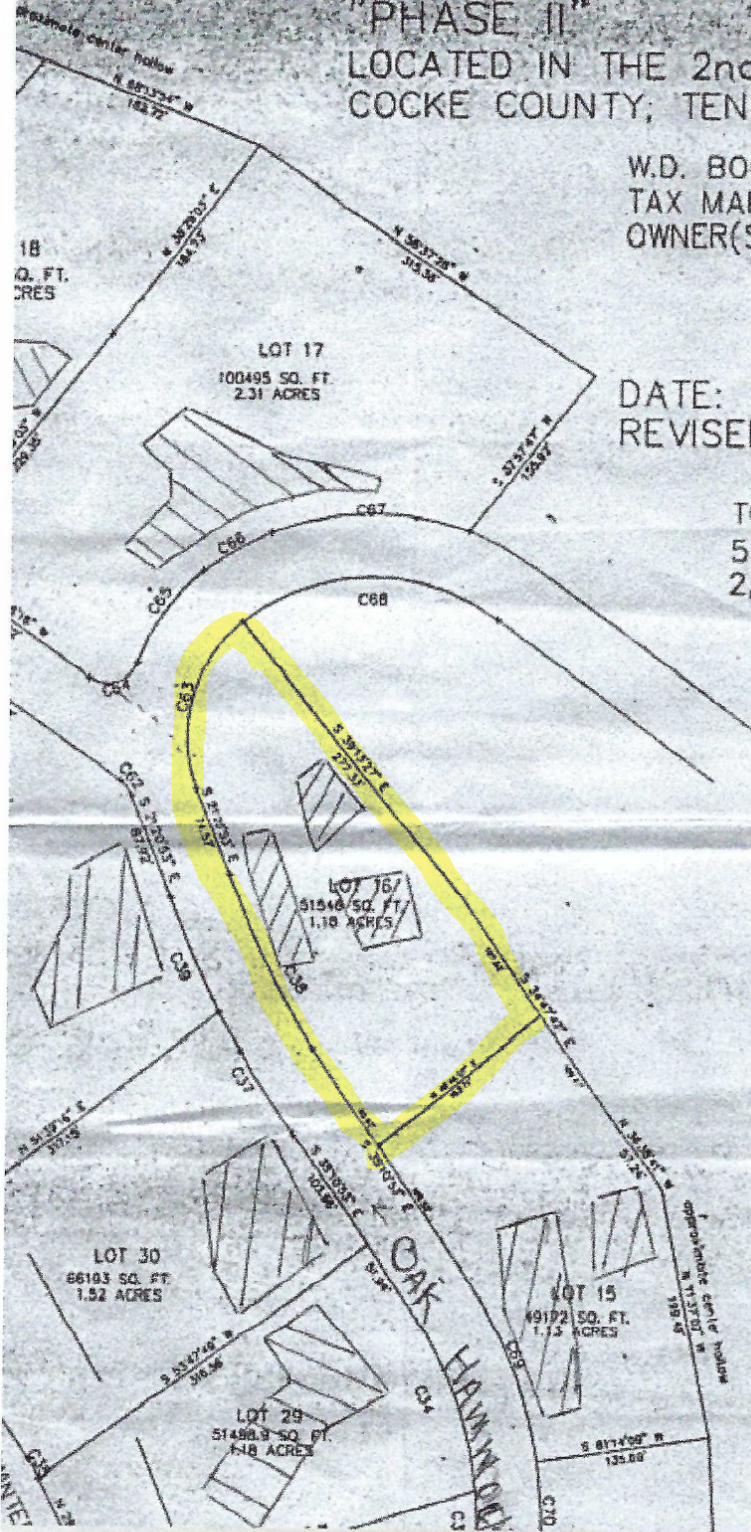


FINAL PLAT OF CLEAR CREEK ESTATES  
 "PHASE II"  
 LOCATED IN THE 2nd CIVIL DISTRICT OF  
 COCKE COUNTY, TENNESSEE

W.D. BOOK 344, PAGE 356  
 TAX MAP 32, PARCEL 22  
 OWNER(S): LAND WORKS INC.  
 3023 SHADOW BROOK DRIVE  
 MARYVILLE, TENNESSEE 37803  
 PHONE (423) 681-1813

DATE: OCTOBER 21, 1997  
 REVISED: MARCH 9, 1998

TOTAL ACREAGE SUBDIVIDED:  
 53.69 ACRES  
 2,338,736 SQUARE FEET



LAND WORKS INC.  
 344/356

MAY 21 1998  
 STATE OF TENNESSEE  
 COCKE COUNTY  
 Received for record on the 21<sup>ST</sup> day of  
MAY 1998 at 12:00 o'clock  
 A.M.; noted in Note Book 15 page 25  
 and recorded in PLAT Deed Book 9  
 Vol. 9 Page 47  
1610 Register.  
 Sec. No. # 113,510  
 PAUL E. LEE  
 REGISTER OF DEEDS  
 NEWPORT, TN. 37821