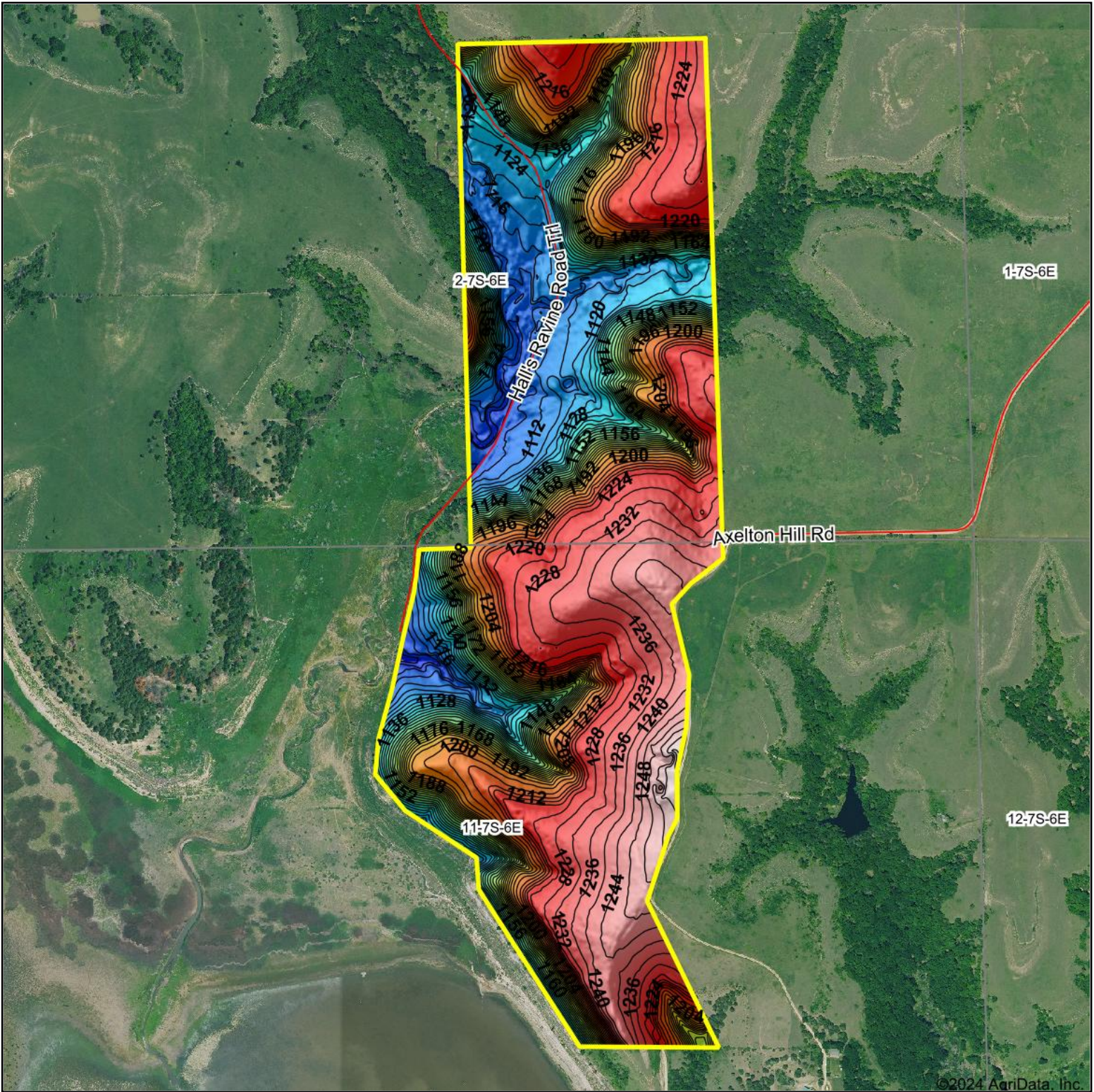


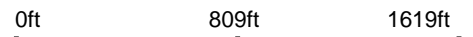
Topography Hillshade



©2024 AgriData, Inc.



Source: USGS 3 meter dem



Interval(ft): 4

Min: 1,091.0

Max: 1,265.6

Range: 174.6

Average: 1,185.7

Standard Deviation: 46.72 ft



11-7S-6E
Riley County
Kansas

Boundary Center: 39° 27' 53.59, -96° 43' 32.38



Maps Provided By:



© AgriData, Inc. 2023

www.AgriDataInc.com