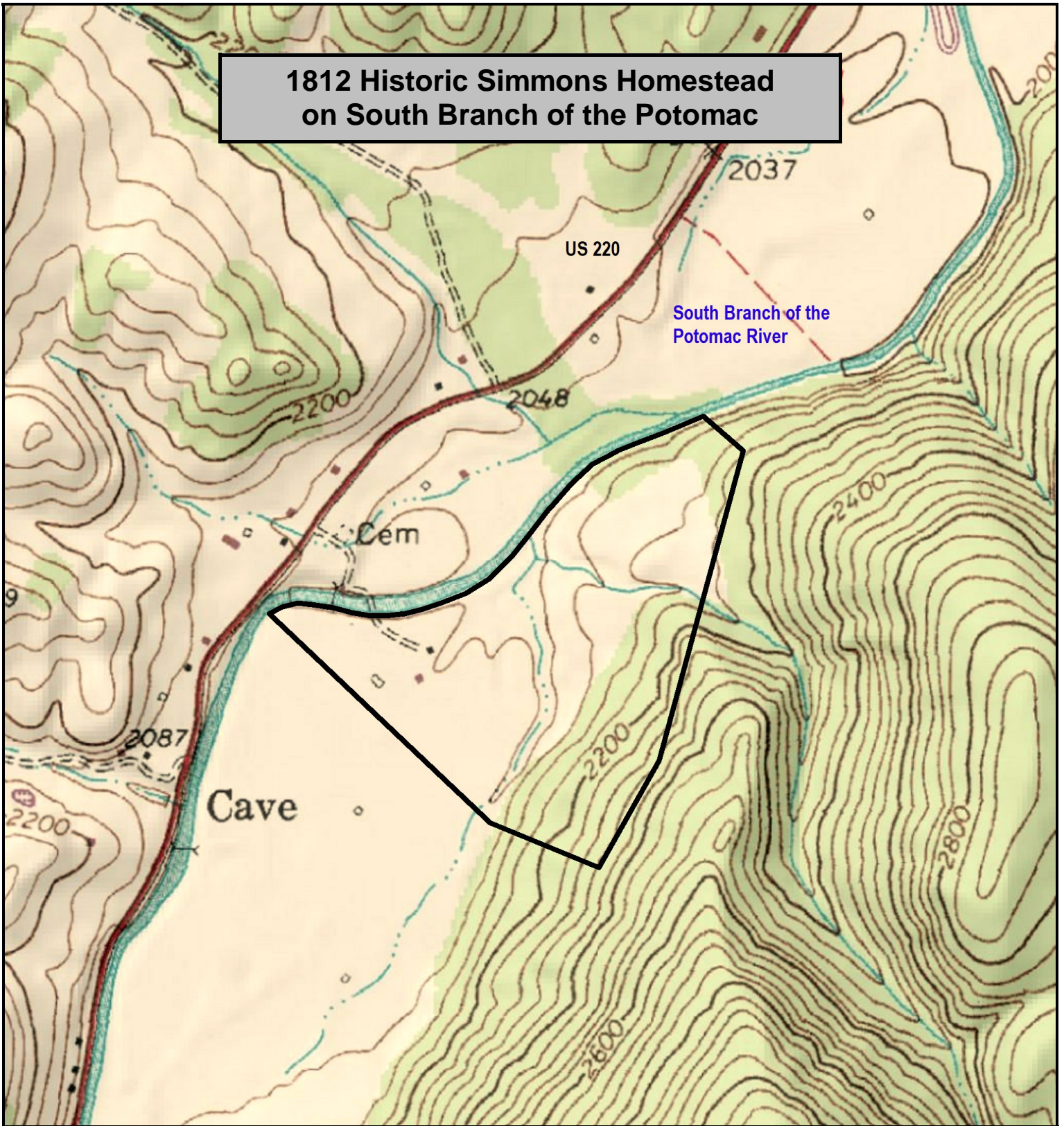


1812 Historic Simmons Homestead on South Branch of the Potomac



1812 Historic Simmons Homestead, Pendleton County, WV
TOPOGRAPHIC MAP

Elevation Range: 2038' - 2306' +/-

Google Coordinates: LAT 38.549140 (N), LON -79.440141 (W)

This map is for general location purposes only. Consult a licensed land surveyor for actual boundary location and acreage.
TAX MAP DEPICTION OF THE PROPERTY IS SHOWN.

FOR TOPO MAP

SCALE 1:9600

1 INCH = 800 FT.

