

FOR SALE 2,062 sf

**200 N Ellis Ave**

Dunn, NC 28334

Office Building

\$299,000



## **PROPERTY FEATURES**

- BUILDING - 2,062 SF
- LOT - 0.12 ACRES
- ZONING - O1
- YEAR BUILT - 1950

**Sales Price: \$299,000**

- DEDICATED PARKING
- CORNER VISIBILITY
- PROXIMITY TO I-95
- PROMINENT SIGNAGE

Large office area, 1 private office & 2 restrooms



**Fleming Properties, Inc.**

*Staying the Course*

Robin Fleming  
(919)215-5621  
rfleming@flemingpropinc.com

Joel Fleming  
(919)215-2624  
joel@devereuxnc.com

FOR SALE 2,062 sf

**200 N Ellis Ave**  
Dunn, NC 28334

Office Building



Main Entrance

Front Parking



**Fleming Properties, Inc.**

*Staying the Course*

Robin Fleming  
(919)215-5621  
rfleming@flemingpropinc.com

Joel Fleming  
(919)215-2624  
joel@devereuxnc.com

FOR SALE 2,062 sf

200 N Ellis Ave

Dunn, NC 28334

Office Building



**Convenient location**  
**Downtown Dunn**  
**Major highway access**

NC 421 - 0.1 mi  
NC 301 - 0.5 mi  
I-95 - 1.3 mi



**Fleming Properties, Inc.**

*Staying the Course*

Robin Fleming  
(919)215-5621  
rfleming@flemingpropinc.com

Joel Fleming  
(919)215-2624  
joel@devereuxnc.com

FOR SALE 2,062 sf

**200 N Ellis Ave**

Dunn, NC 28334

Office Building



Side Elevation

Rear Elevation



**Fleming Properties, Inc.**

*Staying the Course*

Robin Fleming  
(919)215-5621  
rfleming@flemingpropinc.com

Joel Fleming  
(919)215-2624  
joel@devereuxnc.com

FOR SALE 2,062 sf

**200 N Ellis Ave**

Dunn, NC 28334

Office Building



Rear Parking

Side Entrance



**Fleming Properties, Inc.**

*Staying the Course*

Robin Fleming  
(919)215-5621  
rfleming@flemingpropinc.com

Joel Fleming  
(919)215-2624  
joel@devereuxnc.com

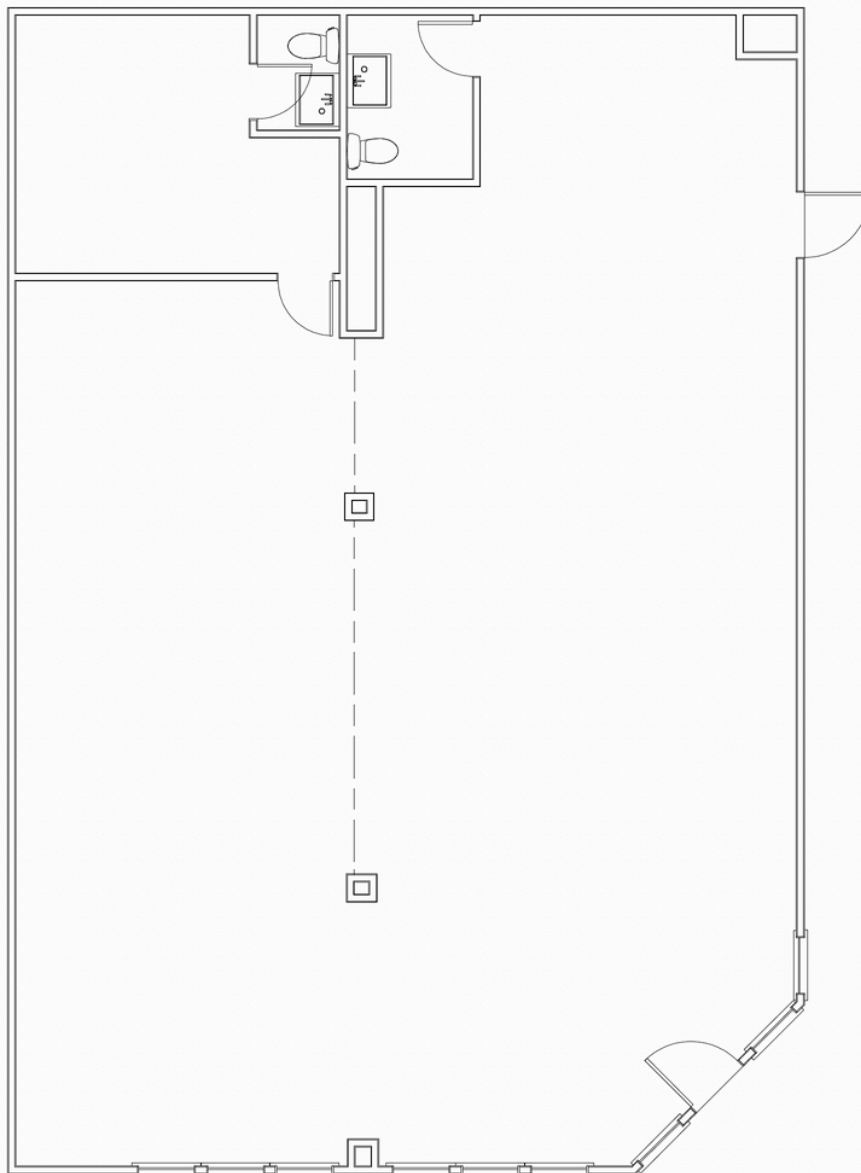
FOR SALE

2,062 sf

**200 N Ellis Ave**

Dunn, NC 28334

Office Building



200 N Ellis Ave  
2,062 sf



**Fleming Properties, Inc.**

*Staying the Course*

Robin Fleming  
(919)215-5621  
rfleming@flemingpropinc.com

Joel Fleming  
(919)215-2624  
joel@devereuxnc.com