

FOR SALE

\$224,000

266 Hwy 20 S, Hines OR 97738

Website Info



Presented By
Mardy Stewart

United Country Jett Blackburn Real Estate
707 Ponderosa Village, Burns, OR 97720
(O) (541)413-5660 | (C) (541)413-5770
mardystewart@yahoo.com | www.jettblackburn.com

Broker Info





TAXES:	\$1465.97
FINANCING:	Cash or conventional
YEAR BUILT:	1958
SQ. FT.:	960 (plus full unfinished basement)
LOT SIZE:	0.25
HEAT SOURCE:	F/A furnace (new 2015)
BEDROOMS:	2
BATHROOMS:	1
APPLIANCES:	Refrigerator, range, washer & dryer
GARAGE:	Detached double w/workshop 24 x 38
PRICE:	\$224,000

Presented By:



Mardy Stewart
(O) (541)413-5660
(C) (541)413-5770
mardystewart@yahoo.com



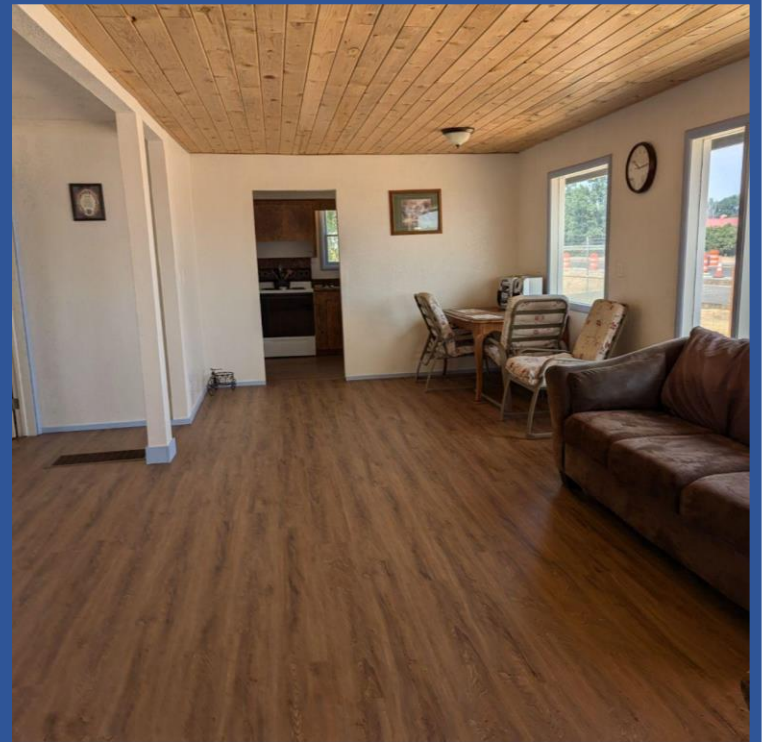
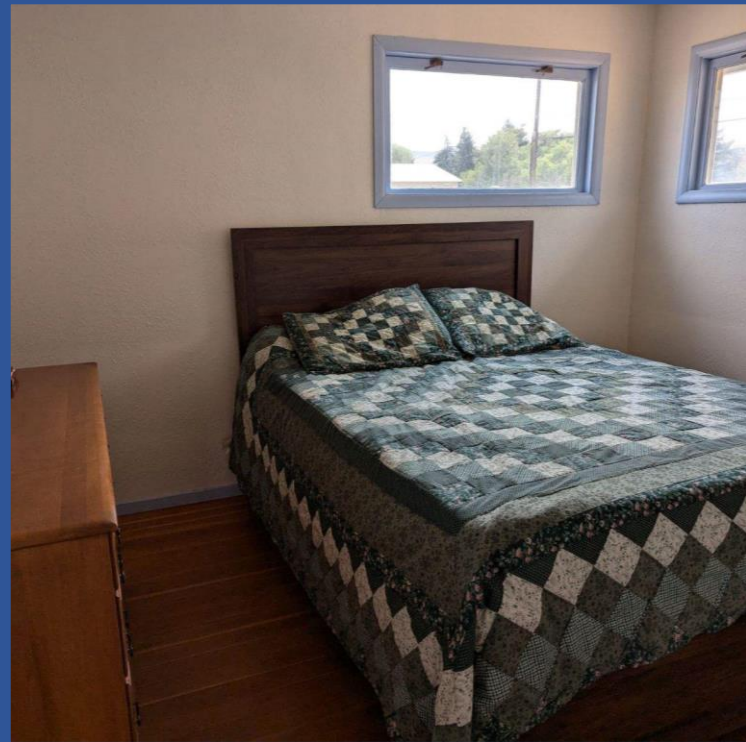
This versatile property, zoned for commercial use, offers a unique blend of residential comfort and business potential. Recently gutted and redone, leaving only the kitchen original, it retains the charm of the original hardwood floors in the bedrooms, while laminate flooring runs throughout the rest of the house. The bathroom boasts all-new plumbing and a complete remodel, and the water heater is just two years old.

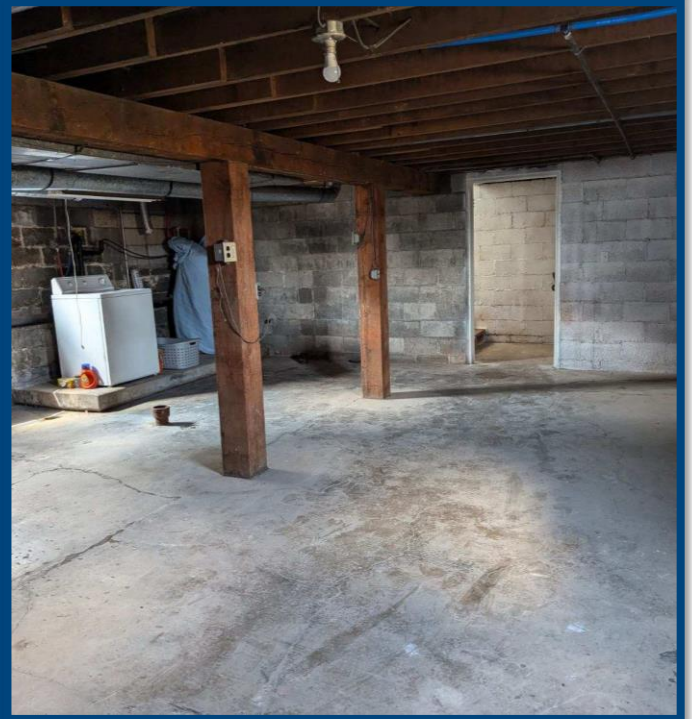
The living area features a cozy wood ceiling, adding a warm, homey feel. The full-size basement, with washer and dryer hookups, remains cool during hot summer days, making it perfect for storage or potential additional living space.

Exterior features include T1-11 siding and a durable metal roof. The property also includes a large detached double car garage with a workshop at the back. Previously equipped with power, it can easily be reconnected.

Neatly maintained, this property's commercial zoning offers numerous possibilities. Conveniently located close to the edge of town, it's an excellent opportunity for various uses.

The seller and his agent make these representations in good faith, from personal knowledge and experience. However, the buyer should inspect this property or cause this property to be inspected by knowledgeable persons so that the buyer may purchase without relying upon any representations made by the seller or his agent. Also, unless otherwise specified we, Jett Blackburn Real Estate, Inc. agents, represent the seller on all our listings.

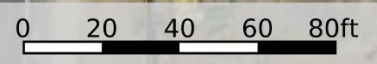




266 Hwy 20 S - McEwen
Oregon, AC +/-



Boundary



266 Hwy 20 S - McEwen
Oregon, AC +/-



Boundary