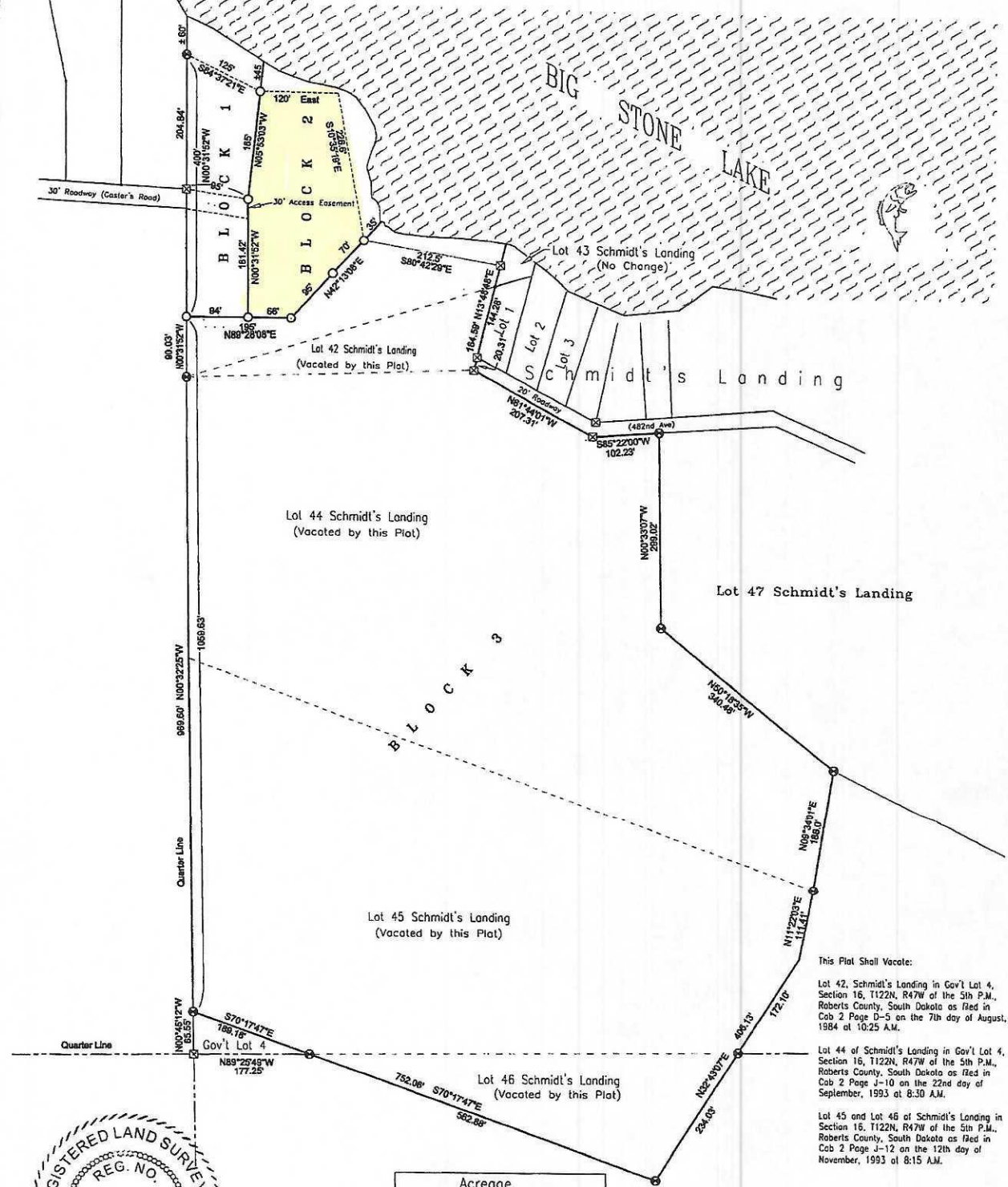


Plat of:

BLOCKS 1, 2, AND 3 OF ROCKY KNOLLS SUBDIVISION
 IN GOV'T LOT 4 AND NW1/4SE1/4, SECTION 16, T122N, R47W
 OF THE 5TH P.M., ROBERTS COUNTY, SOUTH DAKOTA



This Plat Shall Vacate:

Lot 42, Schmidt's Landing in Gov't Lot 4, Section 16, T122N, R47W of the 5th P.M., Roberts County, South Dakota as filed in Cdb 2 Page D-5 on the 7th day of August, 1984 at 10:25 A.M.

Lot 44 of Schmidt's Landing in Gov't Lot 4, Section 16, T122N, R47W of the 5th P.M., Roberts County, South Dakota as filed in Cdb 2 Page J-10 on the 22nd day of September, 1993 at 8:30 A.M.

Lot 45 and Lot 46 of Schmidt's Landing in Section 16, T122N, R47W of the 5th P.M., Roberts County, South Dakota as filed in Cdb 2 Page J-12 on the 12th day of November, 1993 at 8:15 A.M.

This Plat also encompasses the Metes and Bounds Description of "A Tract of land in Government Lot 4 of Section Sixteen, in T122N, R47W of the 5th P.M., the bounds of which are described as follows: Beginning on the Shore of Big Stone Lake at the Northwest Corner of said Lot 4, Thence South along the West Line of said Lot 4, a distance of 8 chains and 49 links, thence North 68° East a distance of 8 chains and 74 links to the shore of Big Stone Lake, thence along the shore of said Big Stone Lake to the Place of Beginning; as filed in Deed 102 Page 742-745.



SCALE: 1" = 150'

○ = ORANGE CAPPED IRON PIN SET LABELED STADTLER LSN# 13482

⊗ = RECOVERED MONUMENT

⊙ = LARSON ENG #2499 WON.

Acreage	
Block 1	1.00 Ac
Block 2	1.35 Ac
Block 3	22.65 Ac
Area Figured to Approximate Shoreline	

HOLTON ENGINEERING INC

Lundee M. Stadler LS #13482