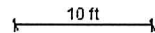
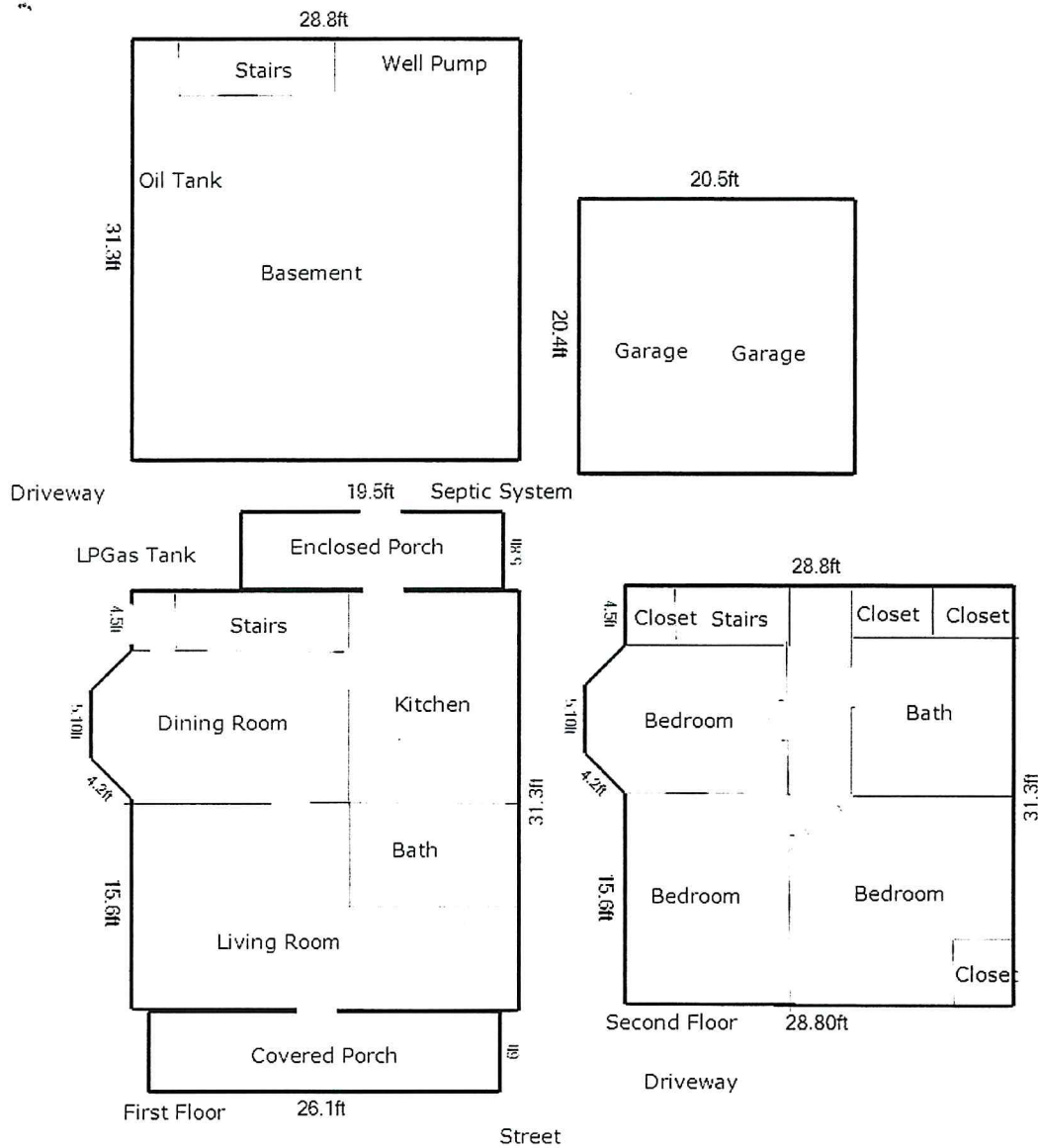


Sketch



Living Area		Area Calculation			
First Floor	923.10 ft ²	First Floor			x 1.00 = 923.10 ft ²
Second Floor	923.10 ft ²	△	28.80ft x 0.16ft x 0.50 =	2.31 ft ²	
Nonliving Area	□	□	31.14ft x 28.8ft x 1.00 =	896.82 ft ²	
Enclosed Porch	113.1 ft ²	△	4.2ft x 2.97ft x 0.35 =	4.41 ft ²	
Front Porch	156.6 ft ²	□	5.10ft x 2.97ft x 1.00 =	15.15 ft ²	
2 Car Detached	418.2 ft ²	△	2.97ft x 4.2ft x 0.35 =	4.41 ft ²	
Basement	901.44 ft ²	Second Floor			x 1.00 = 923.10 ft ²
		△	28.80ft x 0.16ft x 0.50 =	2.31 ft ²	
		□	31.14ft x 28.8ft x 1.00 =	896.82 ft ²	
		△	4.2ft x 2.97ft x 0.35 =	4.41 ft ²	
		□	5.10ft x 2.97ft x 1.00 =	15.15 ft ²	
Total Living Area (rounded):	1846 ft²	△	2.97ft x 4.2ft x 0.35 =	4.41 ft ²	