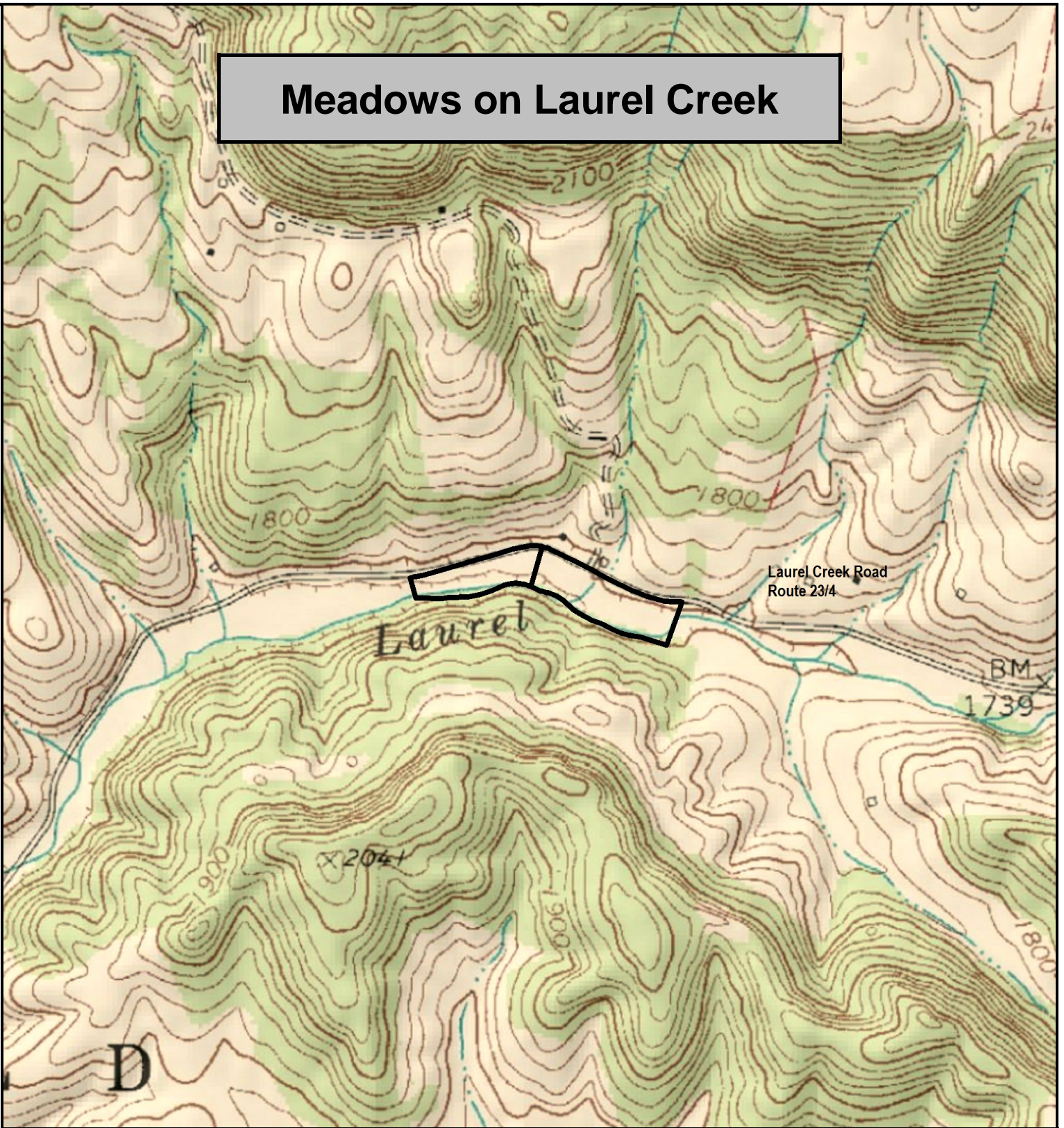


Meadows on Laurel Creek



Meadows on Laurel Creek, Monroe County, WV
TOPOGRAPHIC MAP
Elevation Range: 1691' - 1695' +/-
Google Coordinates: LAT 37.563603 (N), LON -80.650079 (W)
This map is for general location purposes only.
Consult a licensed land surveyor for actual boundary location and acreage.

FOR TOPO MAP

SCALE 1:9600

1 INCH = 800 FT.

