

FOR SALE

\$115,000

481 & 491 Crane Blvd, Burns, OR 97720

Website Info



Presented By
Mardy Stewart

United Country Jett Blackburn Real Estate
707 Ponderosa Village, Burns, OR 97720
(O) (541)413-5660 | (C) (541)413-5770
mardystewart@yahoo.com | www.jettblackburn.com

Broker Info



This duplex sounds like a great opportunity! With one side already rented and the other ready for your updates, you have the potential to create a nice living space while generating income. The fact that it has mostly vinyl windows is a plus for energy efficiency.

Being located on a corner lot on the edge of town offers a bit more privacy and possibly better access. Plus, with high demand for rentals, you could quickly recoup your investment once renovations are complete. The long-term renters taking care of the yard is another bonus, as it shows a level of stability and care for the property.

Zoned commercial opens up additional possibilities for future use or expansion. Whether you're considering it as a rental property or a primary residence with supplemental income, it seems like a promising winter project!

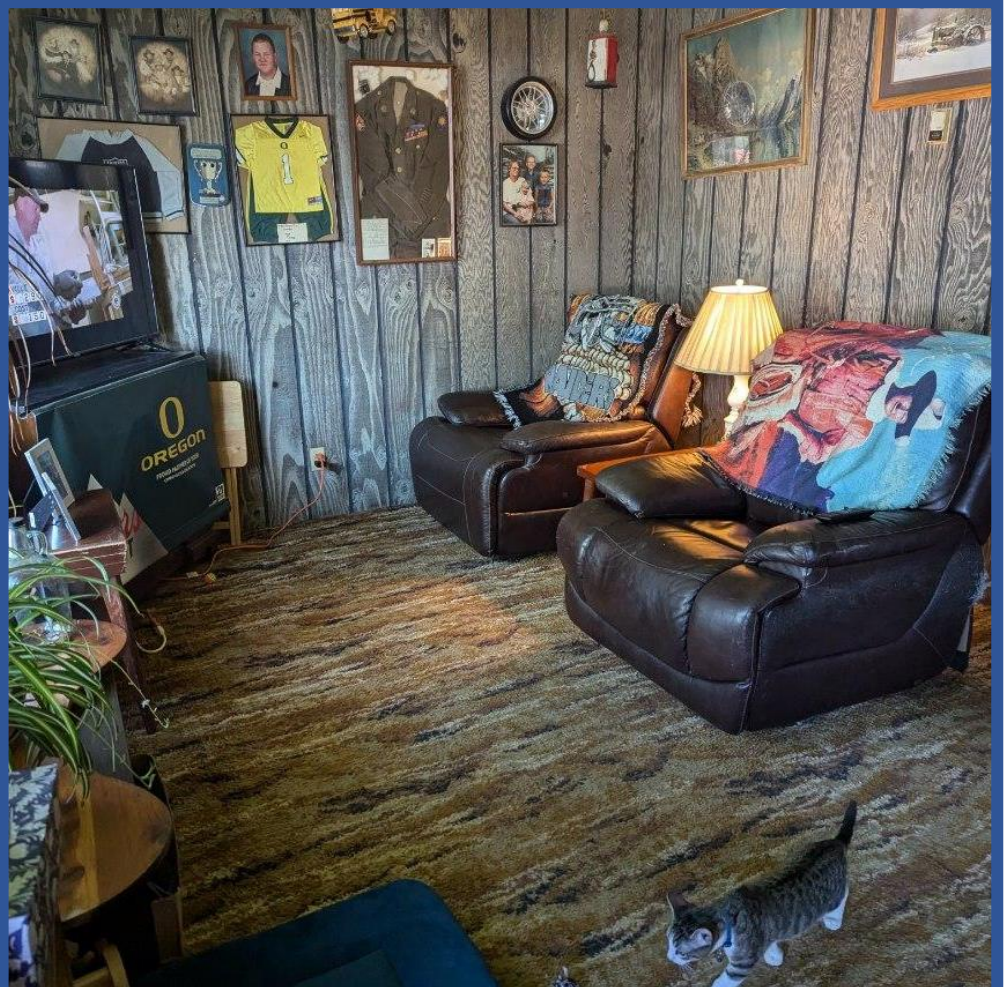
TAXES:	\$1068.40
FINANCING:	Owner Carry
YEAR BUILT:	1927
SQ. FT.:	2030 total plus full unfinished basement
LOT SIZE:	0.23
HEAT SOURCE:	B/B electric
BEDROOMS:	2 per side
BATHROOMS:	1 per side
APPLIANCES:	None
PRICE:	\$115,000

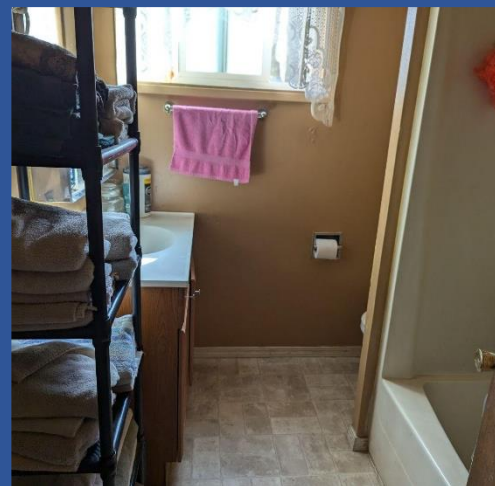
Presented By:



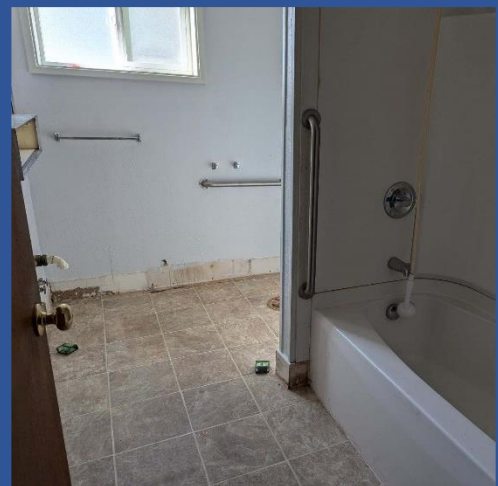
Mardy Stewart
(O) (541)413-5660
(C) (541)413-5770
mardystewart@yahoo.com

The seller and his agent make these representations in good faith, from personal knowledge and experience. However, the buyer should inspect this property or cause this property to be inspected by knowledgeable persons so that the buyer may purchase without relying upon any representations made by the seller or his agent. Also, unless otherwise specified we, Jett Blackburn Real Estate, Inc. agents, represent the seller on all our listings.











481 & 491 Crane Blvd - Banton
Oregon, AC +/-

 United Country
Real Estate
Jett Blackburn
Real Estate Inc.



 Boundary