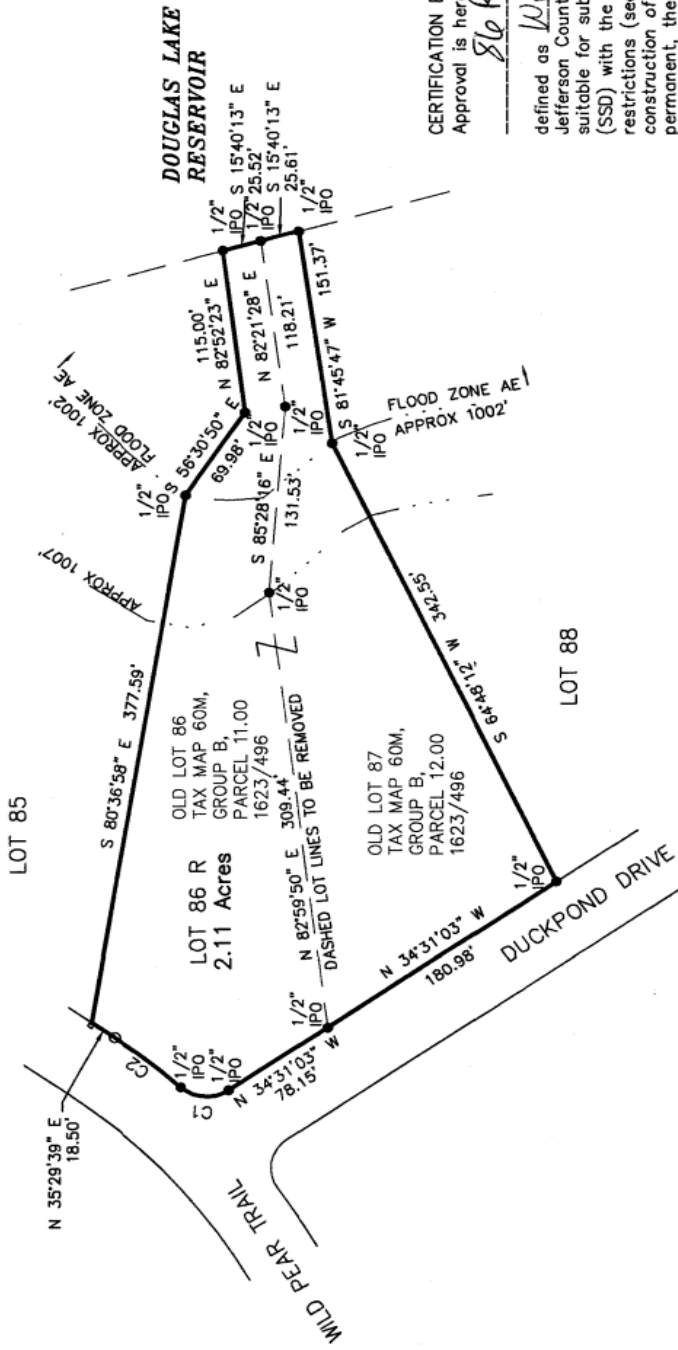


County Director of 911-Addressing
 r) authorized representative



CERTIFICATION BY HEALTH DEPARTMENT
 Approval is hereby granted for lot(s) _____

86 R

defined as *Wild Pear Shore*
 Jefferson County, Tennessee as being
 suitable for sub-surface sewage disposal
 (SSD) with the limited or attached
 restrictions (see box hereon). Prior to any
 construction of a structure, mobile or
 permanent, the plans for exact
 house/structure location must be approved
 and SSD system permit issued by the
 Division of Groundwater Protection. Water
 from water lines under approved facilities and

STATE OF APPROVAL FOR RECORDING
 by certify that the subdivision
 shown hereon has been found to
 y with the Subdivision Regulations