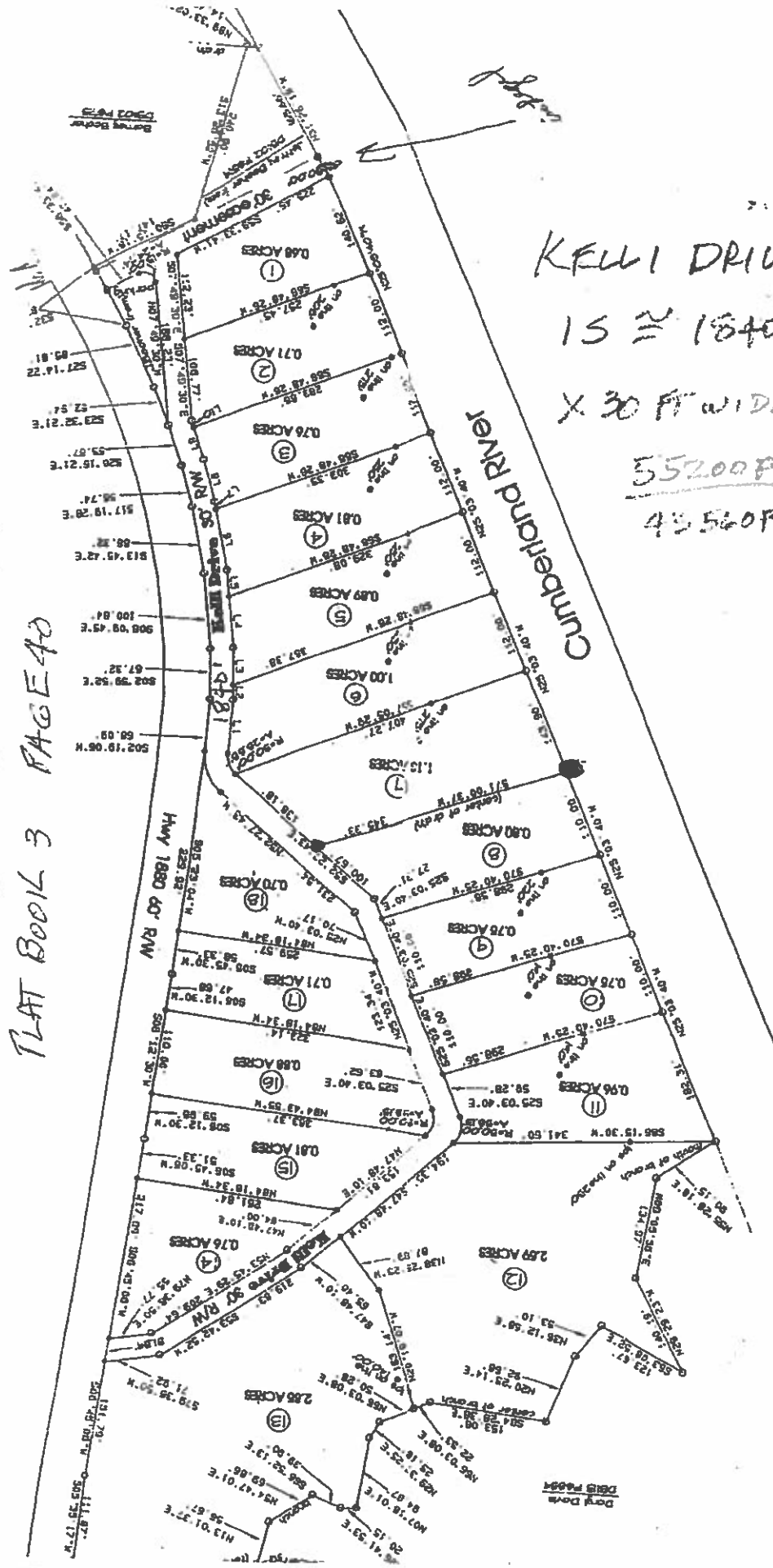


KLUGER 158

# FIDDLERS PARADISE

PLAT BOOK 3 PAGE 40



*Handwritten note:* 1845

KELLI DRIVE

IS  $\approx$  1840 FT LONG

X 30 FT WIDE = 55200 FT<sup>2</sup>

$\frac{55200 \text{ FT}^2}{43560 \text{ FT}^2/\text{Ac}} = 1.27 \text{ ACRES}$

*Handwritten:* 43560 FT<sup>2</sup> / ACRES