



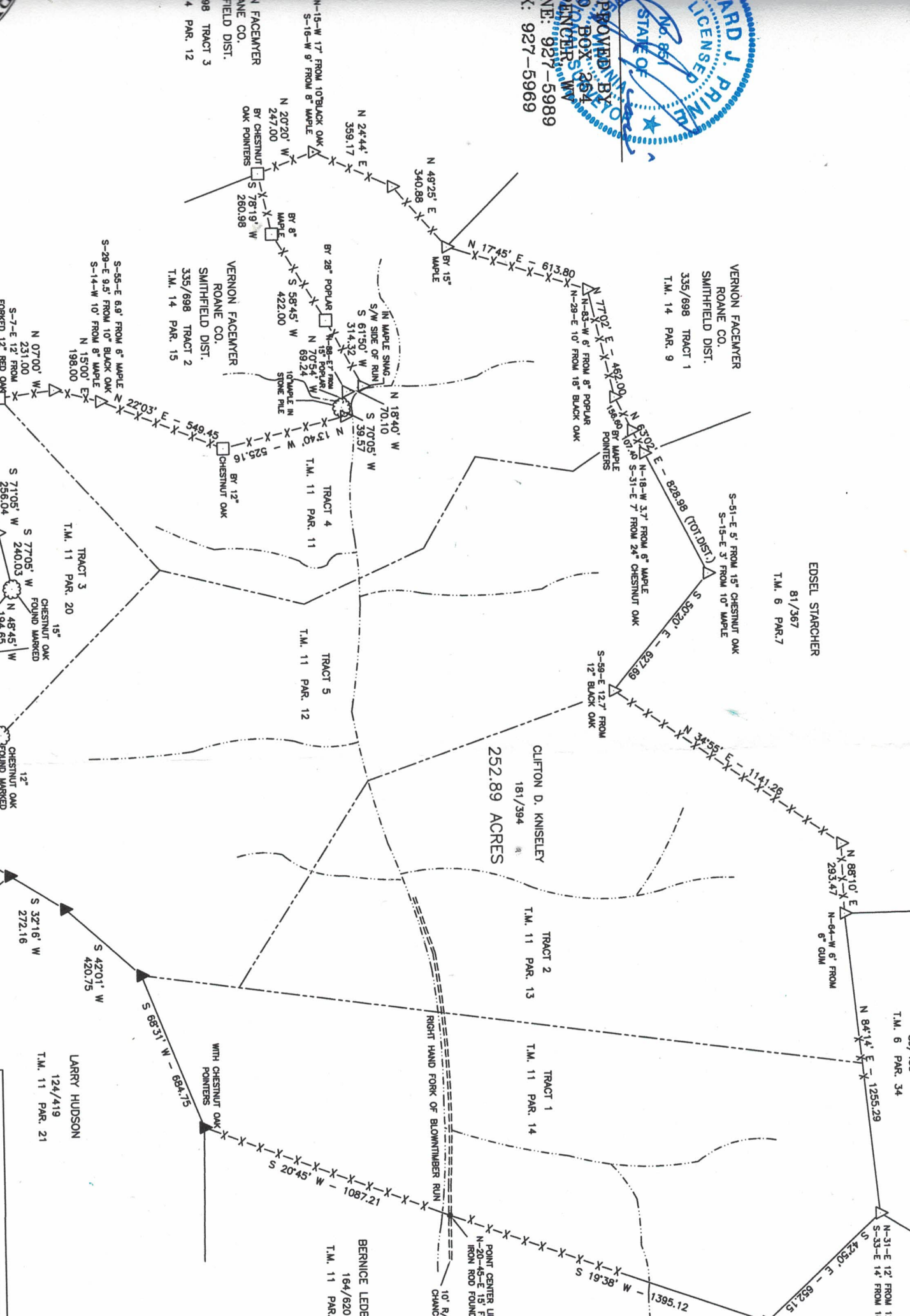
SUBDIVISIONS
URBAN & RURAL
CONSTRUCTION

RED OAK TIMBER
& LAND CO. INC.
T.M. 11 PAR. 24
167/505

RONZEL BAILEY
T.M. 11 PAR. 20
157/505

BLOWNTIMBER
REC. CLUB INC.
T.M. 11 PAR. 21
124/419

DISTRICT
WASHINGTON
PREP
DAV



PROVED BY
STATE OF MARYLAND
PLANNING BOARD
NO. 927-5989
K. 927-5969



1 FAYCENYER
ANNE CO.
FIELD DIST.
4 PAR. 12

VERNON FAYCENYER
ROANE CO.
SMITHFIELD DIST.
335/698 TRACT 2
T.M. 14 PAR. 15

VERNON FAYCENYER
ROANE CO.
SMITHFIELD DIST.
335/698 TRACT 1
T.M. 14 PAR. 9

EDSEL STARCHER
81/367
T.M. 6 PAR. 7

CLIFTON D. KINSELEY
181/394
252.89 ACRES

TRACT 2
T.M. 11 PAR. 13

TRACT 1
T.M. 11 PAR. 14

LARRY HUDSON
124/419
T.M. 11 PAR. 21

BERNICE LEDE
164/620
T.M. 11 PAR.

T.M. 6 PAR. 34
1255.29

N-31-E 12' FROM 1
S-33-E 14' FROM 1
S 42.30' E - 692.15

N-64-W 6' FROM
6" GUM

N 84° 14' E - 293.47

N 88° 10' E

S-51-E 5' FROM 15" CHESTNUT OAK
S-15-E 3' FROM 10" MAPLE

N-18-W 3.7' FROM 6" MAPLE
S-31-E 7' FROM 24" CHESTNUT OAK

S-59-E 12.7' FROM
12" BLACK OAK

S 50° 20' E - 628.88 (TOT. DIST.)

S 50° 20' E - 627.69

N 34° 35' E - 114.26

N 17° 45' E - 613.80

N 49° 25' E - 340.88

N 24° 44' E - 359.17

N 15-W 17' FROM 10" BLACK OAK

S-16-W 6' FROM 8" MAPLE

N 20° 20' W - 247.00

BY 8" MAPLE

BY CHESTNUT OAK POINTERS

S 78° 19' W - 260.98

BY 28" POPLAR

S 58° 45' W - 422.00

N 15° POPLAR

N 70° 54' W - 69.24

10" MAPLE IN STONE PILE

S 61° 50' W - 314.32

S/W SIDE OF RUN

N 18° 40' W - 70.10

N 70° 05' W - 39.57

T.M. 11 PAR. 11

BY 12" CHESTNUT OAK

S 52° 16' W - 525.16

S 49° 45' W - 549.45

22° 03' E - 198.00

N 15° 00' E - 198.00

S-28-E 9.5' FROM 10" BLACK OAK

S-14-W 10' FROM 8" MAPLE

N 07° 00' W - 231.00

S-7-E 12' FROM FORKED 12" RED OAK

N 56° 58' W - 220.89

N-40-W 6' FROM 18" CHESTNUT OAK

SOUTH 8.5' FROM 6" MAPLE

N 80° 00' W - 136.13

S 71° 05' W - 256.04

S 77° 05' W - 240.03

N-12-E 6' FROM 15" WHITE OAK

N 146° 7.4' W - 194.65

N 71° 20' W - 344.46

S 70° 03' W - 484.55

N 51° 23' W - 387.84

S 32° 16' W - 272.16

S 42° 01' W - 420.75

S 65° 31' W - 694.715

WITH CHESTNUT OAK POINTERS

S 20° 45' W - 1087.21

RIGHT HAND FORK OF BLOWNTIMBER RUN

10' RAILROAD CRANCK

POINT CENTER LINE N-20-45-E 15' F IRON ROD FOUND

W - 1395.12

S 38° 16' W - 19.63

N 84° 14' E - 1255.29

N-31-E 12' FROM 1

S-33-E 14' FROM 1

S 42.30' E - 692.15

N 64-W 6' FROM 6" GUM

N 84° 14' E - 293.47

N 88° 10' E

N 34° 35' E - 114.26

S-59-E 12.7' FROM 12" BLACK OAK

S 50° 20' E - 628.88 (TOT. DIST.)

S 50° 20' E - 627.69

N 18-W 3.7' FROM 6" MAPLE

S-31-E 7' FROM 24" CHESTNUT OAK

S-51-E 5' FROM 15" CHESTNUT OAK

S-15-E 3' FROM 10" MAPLE

N 17° 45' E - 613.80

N 49° 25' E - 340.88

N 24° 44' E - 359.17

N 15-W 17' FROM 10" BLACK OAK

S-16-W 6' FROM 8" MAPLE

N 20° 20' W - 247.00

BY 8" MAPLE

BY CHESTNUT OAK POINTERS

S 78° 19' W - 260.98

BY 28" POPLAR

S 58° 45' W - 422.00

N 15° POPLAR

N 70° 54' W - 69.24

10" MAPLE IN STONE PILE

S 61° 50' W - 314.32

S/W SIDE OF RUN

N 18° 40' W - 70.10

N 70° 05' W - 39.57

T.M. 11 PAR. 11

BY 12" CHESTNUT OAK

S 52° 16' W - 525.16

S 49° 45' W - 549.45

22° 03' E - 198.00

N 15° 00' E - 198.00

S-28-E 9.5' FROM 10" BLACK OAK

S-14-W 10' FROM 8" MAPLE

N 07° 00' W - 231.00

S-7-E 12' FROM FORKED 12" RED OAK

N 56° 58' W - 220.89

N-40-W 6' FROM 18" CHESTNUT OAK

SOUTH 8.5' FROM 6" MAPLE

N 80° 00' W - 136.13

S 71° 05' W - 256.04

S 77° 05' W - 240.03

N-12-E 6' FROM 15" WHITE OAK

N 146° 7.4' W - 194.65

N 71° 20' W - 344.46

S 70° 03' W - 484.55

N 51° 23' W - 387.84

S 32° 16' W - 272.16

S 42° 01' W - 420.75

S 65° 31' W - 694.715

WITH CHESTNUT OAK POINTERS

S 20° 45' W - 1087.21

RIGHT HAND FORK OF BLOWNTIMBER RUN

10' RAILROAD CRANCK

POINT CENTER LINE N-20-45-E 15' F IRON ROD FOUND

W - 1395.12

S 38° 16' W - 19.63

N 84° 14' E - 1255.29

N-31-E 12' FROM 1

S-33-E 14' FROM 1

S 42.30' E - 692.15

N 64-W 6' FROM 6" GUM

N 84° 14' E - 293.47

N 88° 10' E

N 34° 35' E - 114.26

S-59-E 12.7' FROM 12" BLACK OAK

S 50° 20' E - 628.88 (TOT. DIST.)

S 50° 20' E - 627.69

N 18-W 3.7' FROM 6" MAPLE

S-31-E 7' FROM 24" CHESTNUT OAK

S-51-E 5' FROM 15" CHESTNUT OAK

S-15-E 3' FROM 10" MAPLE

N 17° 45' E - 613.80

N 49° 25' E - 340.88

N 24° 44' E - 359.17

N 15-W 17' FROM 10" BLACK OAK

S-16-W 6' FROM 8" MAPLE

N 20° 20' W - 247.00

BY 8" MAPLE

BY CHESTNUT OAK POINTERS

S 78° 19' W - 260.98

BY 28" POPLAR

S 58° 45' W - 422.00

N 15° POPLAR

N 70° 54' W - 69.24

10" MAPLE IN STONE PILE

S 61° 50' W - 314.32

S/W SIDE OF RUN

N 18° 40' W - 70.10

N 70° 05' W - 39.57

T.M. 11 PAR. 11

BY 12" CHESTNUT OAK

S 52° 16' W - 525.16

S 49° 45' W - 549.45

22° 03' E - 198.00

N 15° 00' E - 198.00

S-28-E 9.5' FROM 10" BLACK OAK

S-14-W 10' FROM 8" MAPLE

N 07° 00' W - 231.00

S-7-E 12' FROM FORKED 12" RED OAK

N 56° 58' W - 220.89

N-40-W 6' FROM 18" CHESTNUT OAK

SOUTH 8.5' FROM 6" MAPLE

N 80° 00' W - 136.13

S 71° 05' W - 256.04

S 77° 05' W - 240.03

N-12-E 6' FROM 15" WHITE OAK

N 146° 7.4' W - 194.65

N 71° 20' W - 344.46

S 70° 03' W - 484.55

N 51° 23' W - 387.84

S 32° 16' W - 272.16

S 42° 01' W - 420.75

S 65° 31' W - 694.715

WITH CHESTNUT OAK POINTERS

S 20° 45' W - 1087.21

RIGHT HAND FORK OF BLOWNTIMBER RUN

10' RAILROAD CRANCK

POINT CENTER LINE N-20-45-E 15' F IRON ROD FOUND

W - 1395.12

S 38° 16' W - 19.63

N 84° 14' E - 1255.29

N-31-E 12' FROM 1

S-33-E 14' FROM 1

S 42.30' E - 692.15

N 64-W 6' FROM 6" GUM

N 84° 14' E - 293.47

N 88° 10' E

N 34° 35' E - 114.26

S-59-E 12.7' FROM 12" BLACK OAK

S 50° 20' E - 628.88 (TOT. DIST.)

S 50° 20' E - 627.69

N 18-W 3.7' FROM 6" MAPLE

S-31-E 7' FROM 24" CHESTNUT OAK

S-51-E 5' FROM 15" CHESTNUT OAK

S-15-E 3' FROM 10" MAPLE

N 17° 45' E - 613.80

N 49° 25' E - 340.88

N 24° 44' E - 359.17

N 15-W 17' FROM 10" BLACK OAK

S-16-W 6' FROM 8" MAPLE

N 20° 20' W - 247.00

BY 8" MAPLE

BY CHESTNUT OAK POINTERS

S 78° 19' W - 260.98

BY 28" POPLAR

S 58° 45' W - 422.00

N 15° POPLAR

N 70° 54' W - 69.24

10" MAPLE IN STONE PILE

S 61° 50' W - 314.32

S/W SIDE OF RUN

N 18° 40' W - 70.10

N 70° 05' W - 39.57

T.M. 11 PAR. 11

BY 12" CHESTNUT OAK

S 52° 16' W - 525.16

S 49° 45' W - 549.45

22° 03' E - 198.00

N 15° 00' E - 198.00

S-28-E 9.5' FROM 10" BLACK OAK

S-14-W 10' FROM 8" MAPLE

N 07°