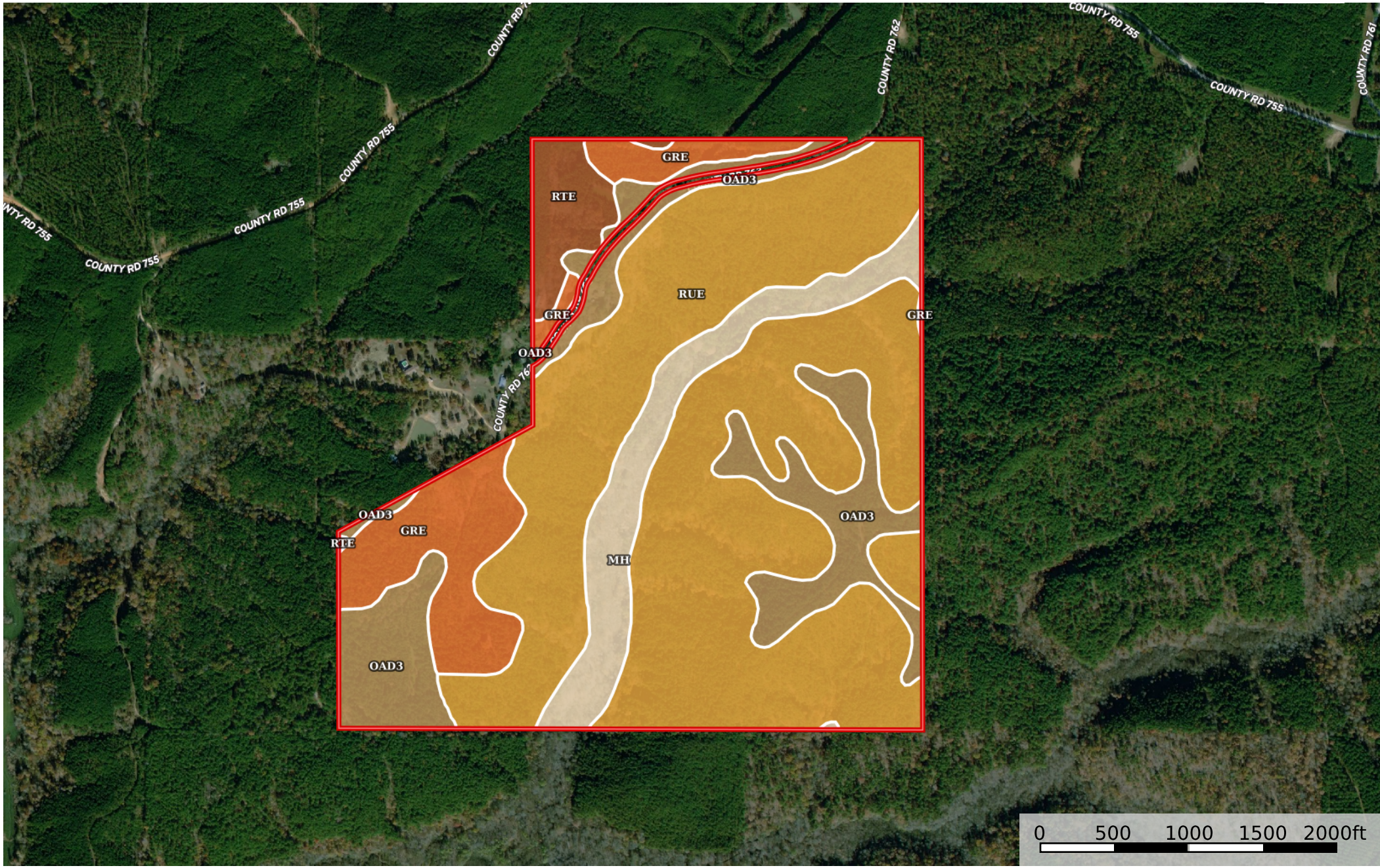


Alcorn.298.Homan

Alcorn County, Mississippi, 298 AC +/-




 Boundary

 All Polygons 285.84 ac


SOIL CODE	SOIL DESCRIPTION	ACRES	%	CPI	NCCPI	CAP
RuE	Ruston-Shubuta-Linker association, hilly	172.9 3	60.51	0	48	7e
OaD3	Ora fine sandy loam, 5 to 12 percent slopes, severely eroded	45.14	15.79	0	51	6e
GrE	Gullied land-Ruston complex, 8 to 40 percent slopes-ruston, (smithdale)	30.79	10.77	0	1	7e
Mh	Mantachie fine sandy loam, 0 to 2 percent slopes, occasionally flooded	26.2	9.17	0	73	2w
RiE	Ruston-Linker association, hilly	10.78	3.77	0	39	7e
TOTALS		285.8 4(*)	100%	-	45.37	6.38

(*) Total acres may differ in the second decimal compared to the sum of each acreage soil. This is due to a round error because we only show the acres of each soil with two decimal.

 Boundary 263.98 ac

SOIL CODE	SOIL DESCRIPTION	ACRES	%	CPI	NCCPI	CAP
RuE	Ruston-Shubuta-Linker association, hilly	172.9 3	65.51	0	48	7e
OaD3	Ora fine sandy loam, 5 to 12 percent slopes, severely eroded	41.28	15.64	0	51	6e
Mh	Mantachie fine sandy loam, 0 to 2 percent slopes, occasionally flooded	26.2	9.93	0	73	2w
GrE	Gullied land-Ruston complex, 8 to 40 percent slopes-ruston, (smithdale)	23.45	8.88	0	1	7e
RiE	Ruston-Linker association, hilly	0.12	0.05	0	39	7e
TOTALS		263.9 8(*)	100%	-	46.77	6.35

(*) Total acres may differ in the second decimal compared to the sum of each acreage soil. This is due to a round error because we only show the acres of each soil with two decimal.

 Boundary 21.86 ac

SOIL CODE	SOIL DESCRIPTION	ACRES	%	CPI	NCCPI	CAP
RiE	Ruston-Linker association, hilly	10.66	48.79	0	39	7e
GrE	Gullied land-Ruston complex, 8 to 40 percent slopes-ruston, (smithdale)	7.34	33.59	0	1	7e
OaD3	Ora fine sandy loam, 5 to 12 percent slopes, severely eroded	3.86	17.67	0	51	6e
TOTALS		21.86(*)	100%	-	28.37	6.82

(*) Total acres may differ in the second decimal compared to the sum of each acreage soil. This is due to a round error because we only show the acres of each soil with two decimal.

Capability Legend

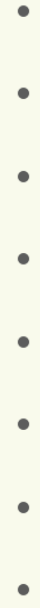
Increased Limitations and Hazards

Decreased Adaptability and Freedom of Choice Users

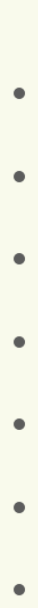
Land, Capability



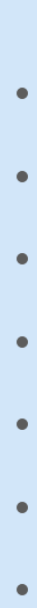
'Wild Life'



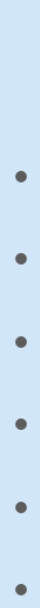
Forestry



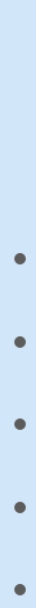
Limited



Moderate



Intense



Limited



Moderate



Intense



Very Intense



Grazing Cultivation

(c) climatic limitations (e) susceptibility to erosion

(s) soil limitations within the rooting zone (w) excess of water