

DIVISION FORMERLY
IN MAP BOOK 24,

GATLINBURG PLANNING REGION,
DISTRICT.

AT THE SIDE THEREOF, UNLESS
OTHERWISE NOTED. ANY CUTTING, FILLING OR
ALTERATIONS OF THE SOFT CONDITIONS MAY
VOID THIS APPROVAL.

DIRECTOR, ENVIRONMENTAL HEALTH
SEVIER CO. HEALTH DEPARTMENT

DATE

LOTS: 1-12, 17, 18, 20-26, 36, 37, 41-45, 47-49.
ARE APPROVED FOR STANDARD INDIVIDUAL
SUBSURFACE SEWAGE DISPOSAL SYSTEM
SERVING A MAXIMUM OF FOUR BEDROOMS.

HEALTH DEPT. RESTRICTIONS:

(1) LOTS 13-16, 19, 27-35, 38-40, AND 46 ARE TO BE CONNECTED
TO A LARGE CONVENTIONAL SYSTEM DESIGNED BY AN ENGINEER
FOR 11,400 GALLONS. SOME OF THESE LOTS MAY HAVE ADEQUATE
AREA TO INSTALL THE PRIMARY SYSTEM WITHOUT CONNECTING
TO LARGE SYSTEM.

(2) LOTS 13-16, 19, 27-35, 38-40, AND 46 MUST HAVE A
RECORDED HOMEOWNERS ASSOCIATION FOR MAINTENANCE
AND REPLACEMENT OF SEWAGE DISPOSAL SYSTEM THAT
IS ACCEPTABLE.

HOUSE SIZE LOCATION AND DESIGN WILL DETERMINE
THE ACTUAL NUMBER OF BEDROOMS FOR WHICH
A PERMIT MAY BE ISSUED.

RESUBDIVISION PLAT OF

**THE ENCLAVE
AT
COVE MOUNTAIN**

LOTS 1-49

**GATLINBURG PLANNING REGION
DISTRICT 11, SEVIER COUNTY, TENNESSEE
PROPERTY OWNER: JOHN W. & PATRICIA BLACK
DEED BOOK 458, PAGE 183
FORMERLY**

p. 3 of 3

4:14pm

10-06-15

From: 8654291965

To: 8654531548

SEVIER COUNTY TAX MAPS.

ARE 40 FOOT
PREVIOUS PLAT.
MAINTAINED.

PERMITS REQUIREMENTS
SHALL BE BUILT NO CLOSER
TO LINES, AND FOR CLEARING
ON THE RIGHT SIDE OF THE POWER LINE.

FROM A SURVEY BY
CHARLES R. RUSK,

BASED ON AERIAL SURVEYS,
SEVIER, ALCOA, TENNESSEE,

EASEMENTS ALONG EACH

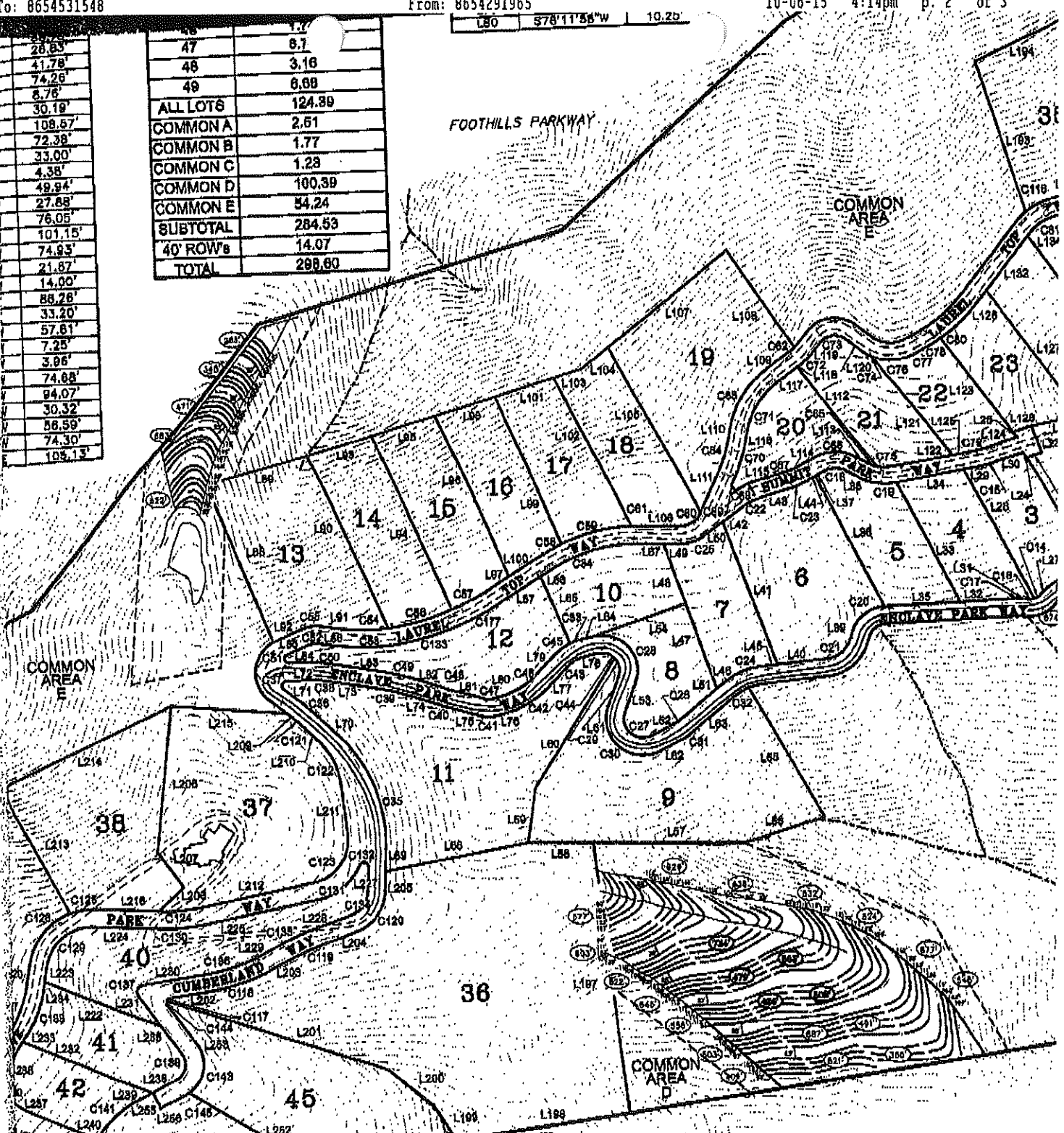
THIS PLAT DOES NOT
NEED APPROVAL OF SETBACK
STRUCTURES.

L80 578'11"56"W 10.2b

28.83'	47	1.77
41.78'	48	6.7
74.26'	49	3.16
8.78'		6.88
30.19'	ALL LOTS	124.89
108.87'	COMMON A	2.51
72.38'	COMMON B	1.77
35.00'	COMMON C	1.28
4.38'	COMMON D	100.39
48.84'	COMMON E	54.24
27.88'	SUBTOTAL	284.53
76.05'	40' ROWs	14.07
101.15'	TOTAL	298.60
74.93'		
21.87'		
14.00'		
88.28'		
33.20'		
57.81'		
7.25'		
3.96'		
74.88'		
94.07'		
30.32'		
58.59'		
74.30'		
103.13'		

FOOTHILLS PARKWAY

COMMON AREA E



CERTIFICATE OF STREET NAMES

HEREBY CERTIFY THAT ALL STREET NAMES HAVE BEEN APPROVED BY THE SEVIER COUNTY EMERGENCY COMMUNICATIONS DISTRICT, ARE IN COMPLIANCE WITH E-911 SPECIFICATIONS, AND DO NOT CONFLICT WITH OTHER STREET NAMES IN SEVIER COUNTY.

CERTIFICATE OF ACCU

I HEREBY CERTIFY THAT THE PLAN SHC HEREON IS A TRUE AND CORRECT SURVEY REQUIRED BY THE GATLINBURG REGIONAL AND THAT THE MONUMENTS HAVE BEEN PLAC TO THE SPECIFICATIONS OF THE SUBDI

REGISTERED SURVEYOR

VINCE LOVEDAY, E-911 COORDINATOR

DATE