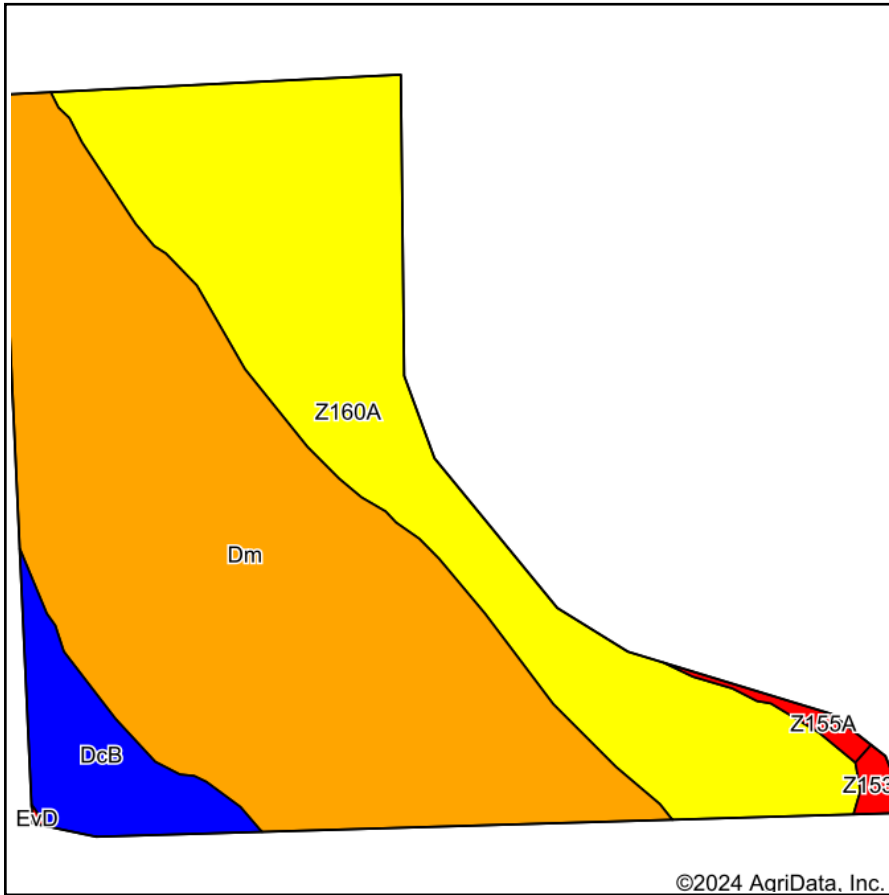
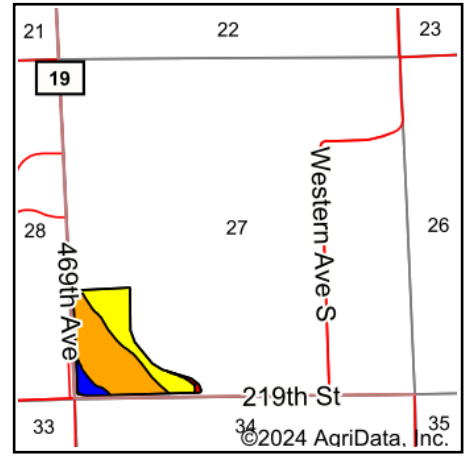


Soils Map



Soils data provided by USDA and NRCS.



State: **South Dakota**
 County: **Brookings**
 Location: **27-109N-50W**
 Township: **Medary**
 Acres: **43.23**
 Date: **10/11/2024**



Maps Provided By:



© AgriData, Inc. 2023

www.AgriDataInc.com



Area Symbol: SD011, Soil Area Version: 31

Code	Soil Description	Acres	Percent of field	PI Legend	Non-Irr Class *c	Productivity Index
Dm	Dimo clay loam, 0 to 2 percent slopes	24.43	56.5%		IIs	73
Z160A	Moritz, occasionally flooded-Lamoure, frequently flooded, complex, 0 to 2 percent slopes	15.51	35.9%		IIs	65
DcB	Davis loam, 2 to 6 percent slopes	2.74	6.3%		Ile	85
Z155A	Lowe, occasionally flooded-Ludden, frequently flooded, complex, 0 to 1 percent slopes	0.29	0.7%		IVw	47
Z153A	Lamoure-Rauville silty clay loams, channeled, 0 to 2 percent slopes, frequently flooded	0.26	0.6%		Vlw	13
Weighted Average					2.04	70.4

*c: Using Capabilities Class Dominant Condition Aggregation Method