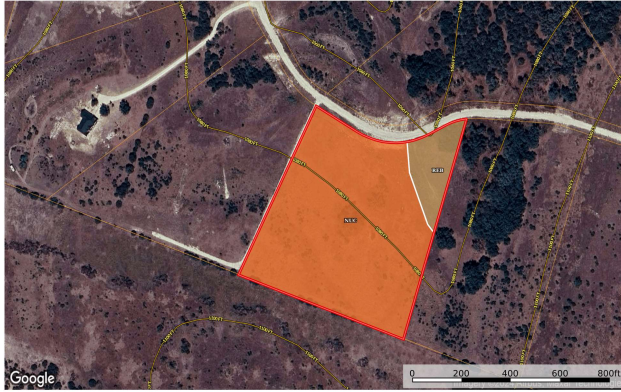


Mark & Naomi Clark
Hamilton County, Texas, 10.01 AC +/-



The information contained herein was obtained from the public records of Hamilton County, Texas. It is provided as a service and is not guaranteed to be accurate or complete.

Boundary 10.0 ac

SOIL CODE	SOIL DESCRIPTION	ACRES	%	CPI	NCCPI	CAP
NuC	Null very stony silty clay loam, 2 to 6 percent slopes	8.89	88.9	0	28	68
ReB	Real gravelly clay loam, 1 to 3 percent slopes	1.11	11.1	0	14	48
TOTALS		10.01	100%	-	26.45	5.78

(*) Total acres may differ in the second decimal compared to the sum of each acreage soil. This is due to a round error because we only show the acres of each soil with two decimal.

Capability Legend

Increased Limitations and Hazards
Decreased Adaptability and Freedom of Choice Users

Land, Capability

	1	2	3	4	5	6	7	8
'Wild Life'	*	*	*	*	*	*	*	*
Forestry	*	*	*	*	*	*	*	*
Limited	*	*	*	*	*	*	*	*
Moderate	*	*	*	*	*	*	*	*
Intense	*	*	*	*	*	*	*	*
Limited	*	*	*	*	*	*	*	*
Moderate	*	*	*	*	*	*	*	*
Intense	*	*	*	*	*	*	*	*
Very Intense	*	*	*	*	*	*	*	*

Grazing Cultivation

(c) climatic limitations (e) susceptibility to erosion
(s) soil limitations within the rooting zone (w) excess of water