

North Park Village
 of part of the SW1/4 SW1/4 Section 21
 of the 6th P.M. Hershey, Lincoln County, Nebraska
 T. 40 N. R. 23 W.
 July 2000

North Park Village
 of part of the SW1/4 SW1/4 Section 21
 of the 6th P.M. Hershey, Lincoln County, Nebraska
 T. 40 N. R. 23 W.
 July 2000

North Park Village
 of part of the SW1/4 SW1/4 Section 21
 of the 6th P.M. Hershey, Lincoln County, Nebraska
 T. 40 N. R. 23 W.
 July 2000

North Park Village
 of part of the SW1/4 SW1/4 Section 21
 of the 6th P.M. Hershey, Lincoln County, Nebraska
 T. 40 N. R. 23 W.
 July 2000

North Park Village
 of part of the SW1/4 SW1/4 Section 21
 of the 6th P.M. Hershey, Lincoln County, Nebraska
 T. 40 N. R. 23 W.
 July 2000

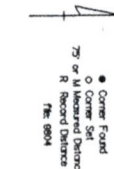
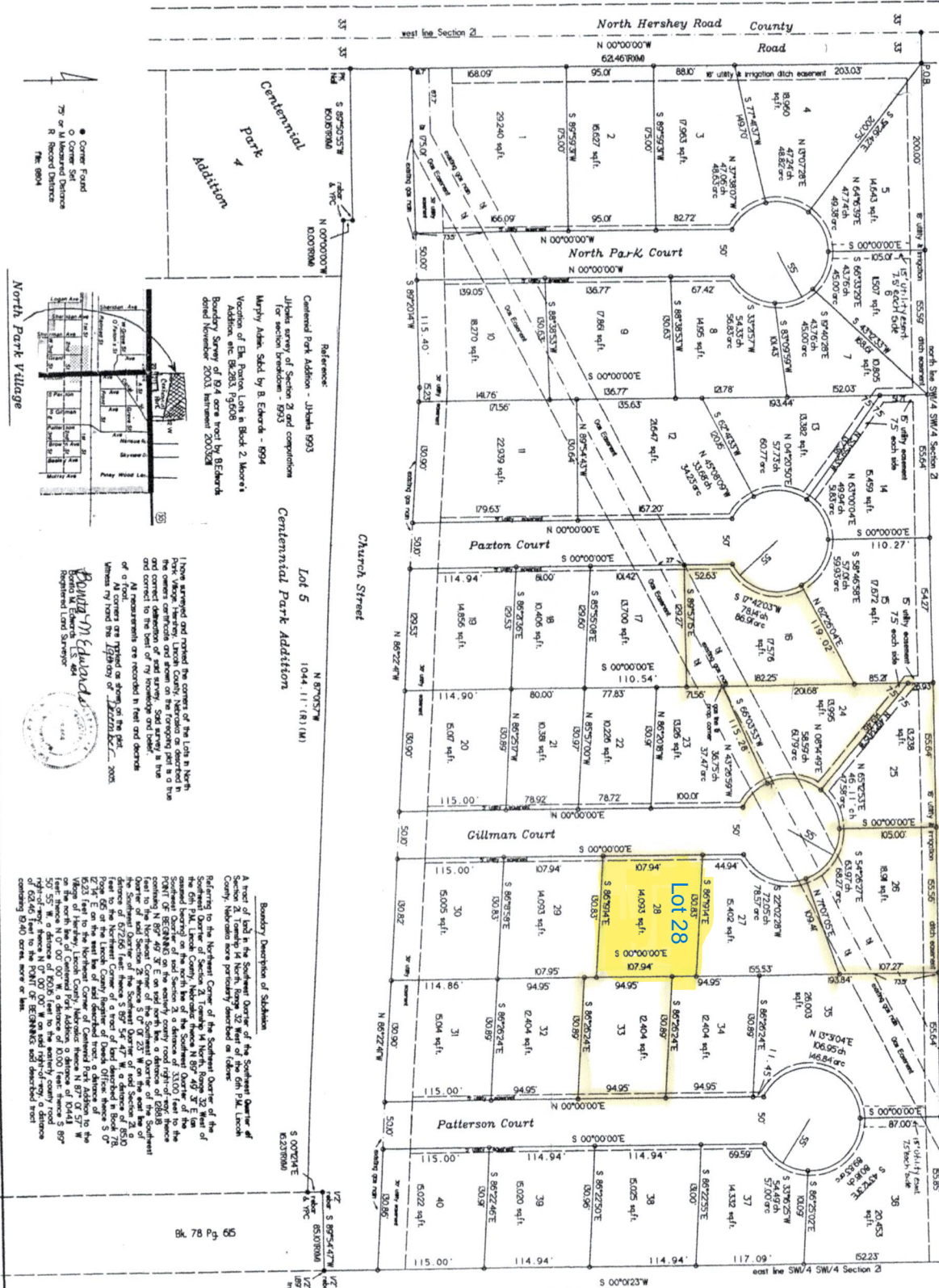
North Park Village
 of part of the SW1/4 SW1/4 Section 21
 of the 6th P.M. Hershey, Lincoln County, Nebraska
 T. 40 N. R. 23 W.
 July 2000

North Park Village
 of part of the SW1/4 SW1/4 Section 21
 of the 6th P.M. Hershey, Lincoln County, Nebraska
 T. 40 N. R. 23 W.
 July 2000

North Park Village
 of part of the SW1/4 SW1/4 Section 21
 of the 6th P.M. Hershey, Lincoln County, Nebraska
 T. 40 N. R. 23 W.
 July 2000

North Park Village
 of part of the SW1/4 SW1/4 Section 21
 of the 6th P.M. Hershey, Lincoln County, Nebraska
 T. 40 N. R. 23 W.
 July 2000

North Park Village
 of part of the SW1/4 SW1/4 Section 21
 of the 6th P.M. Hershey, Lincoln County, Nebraska
 T. 40 N. R. 23 W.
 July 2000



Reference:
 Centennial Park Addition - J.H. Hawks 1993
 J.H. Hawks survey of Section 21 and completion
 for section breakdown 1993
 Murphy Adams, Skidell by R. Edwards - 6994
 Variation of Elk Pointe Lot 1 in Block 2, Moore's
 Boundary Survey of 9.4 acre tract by Edwards
 dated November 2003, instrument 2003028

Lot 5
 N 87°05'37\"/>

Boundary Description of Addition:
 A tract of land in the Southeast Quarter of
 Section 21, Township 40 North, Range 23 West of the 6th P.M. Lincoln
 County, Nebraska more particularly described as follows:
 Beginning at the Northwest Corner of the Southeast Quarter of
 Section 21, Township 40 North, Range 23 West of the 6th P.M. Lincoln
 County, Nebraska; thence S 89°49'47\"/>

State of Nebraska
 County of Lincoln
 I, **W.D.R. Edwards, LLC**
 Attorney for **W.D.R. Edwards, LLC**
 do hereby certify that the foregoing plat was
 prepared to the best of my knowledge and belief
 in accordance with the laws of the State of
 Nebraska, and that the same is a true and
 correct copy of the original as recorded on file
 in the office of the County Clerk of Lincoln
 County, Nebraska.

State of Nebraska
 County of Lincoln
 I, **W.D.R. Edwards, LLC**
 Attorney for **W.D.R. Edwards, LLC**
 do hereby certify that the foregoing plat was
 prepared to the best of my knowledge and belief
 in accordance with the laws of the State of
 Nebraska, and that the same is a true and
 correct copy of the original as recorded on file
 in the office of the County Clerk of Lincoln
 County, Nebraska.

State of Nebraska
 County of Lincoln
 I, **W.D.R. Edwards, LLC**
 Attorney for **W.D.R. Edwards, LLC**
 do hereby certify that the foregoing plat was
 prepared to the best of my knowledge and belief
 in accordance with the laws of the State of
 Nebraska, and that the same is a true and
 correct copy of the original as recorded on file
 in the office of the County Clerk of Lincoln
 County, Nebraska.