

UC
RANCH
PROPERTIES
A DIVISION OF UNITED COUNTRY REAL ESTATE

JETT BLACKBURN
REAL ESTATE Inc.

Sodhouse Lane
Princeton, OR 97721
\$45,000

Black Butte Acreage

Selling Oregon Farms & Ranches Since 1960

FOR SALE



LEGAL DESC.: T26s R32e W.M. Sec 36 TL 2000
ACREAGE: 39.09 +/- acres
TAXES: \$85.31
PRICE: \$45,000.00
UTILITIES: Power (Harney Electric)
FINANCING: Cash or bank

This Eastern Oregon acreage is located off Sodhouse Lane, county-maintained gravel road, southeast of Burns Oregon 41 miles. The property is relatively flat covered in sage with fencing & power along the entire southern portion. The acreage has great access to the Central Patrol Road, Lava Bed Rd, & others that are great places for viewing wildlife and exploring. The Peter French Round Barn, Malheur Wildlife Refuge, Diamond Craters, are just a handful of amazing points of interest in the area. Overall this property is fantastic for a potential homesite or a place to get away and enjoy the wildlife in the surrounding area. This property also has thousands of acres of public land on the south side for recreation.

The seller and his agent makes these representations in good faith, from personal knowledge and experience. However, the buyer should inspect this property or cause this property to be inspected by knowledgeable persons so that the buyer may purchase without relying upon any representations made by the seller or his agent Also, unless otherwise specified, we, Jett Blackburn Real Estate, Inc. agents, represent the seller on any of our listings.





39 Acres - Sodhouse lane - Houk
Oregon, AC +/-



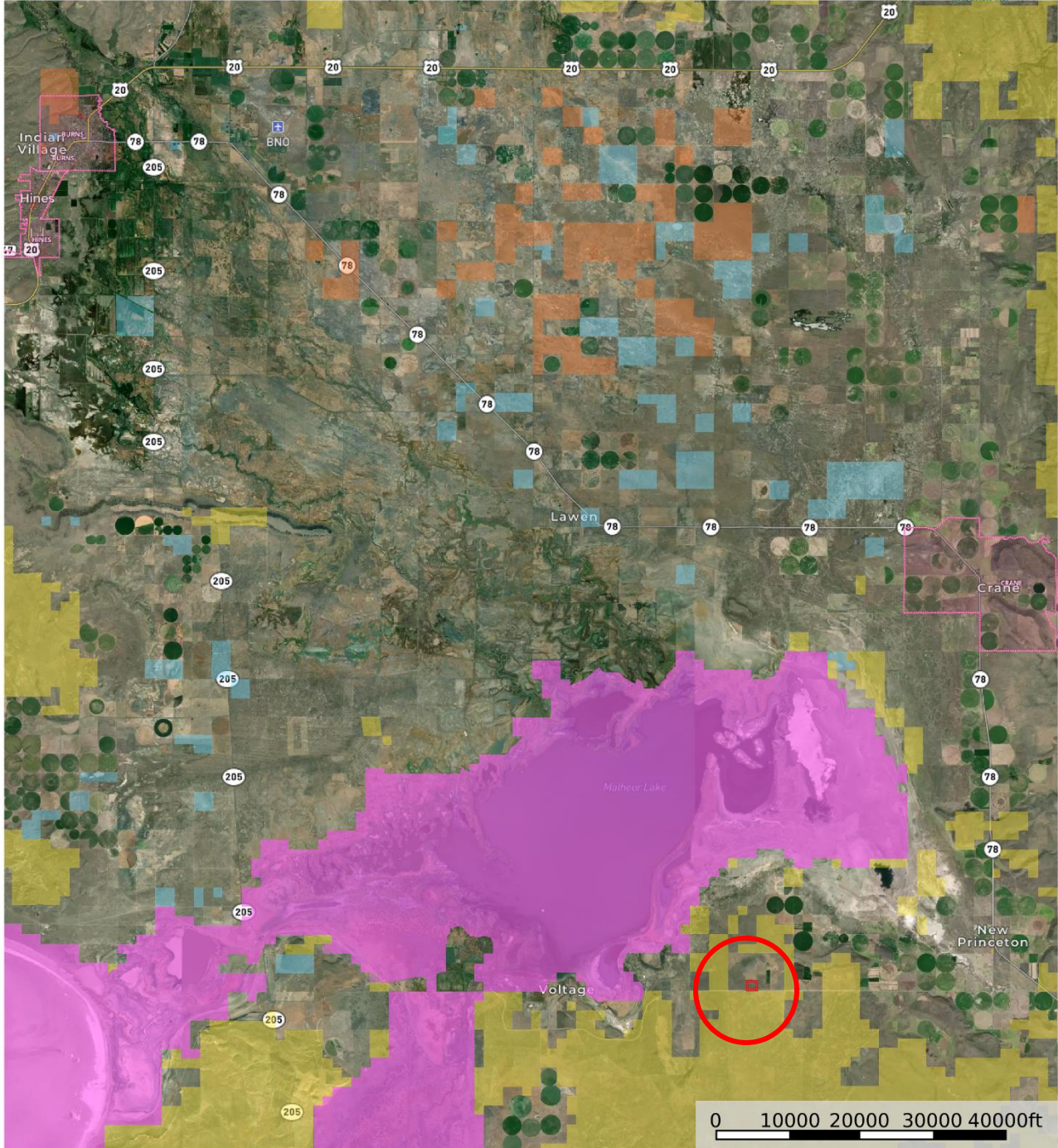
- Boundary
- Forest Service
- State Land
- Fish and Wildlife
- National Park
- Other
- BLM
- Local Government

United County Jett Blackburn Real Estate (map for illustration purposes only)
P: 541-413-5660 www.jettblackburn.com 707 Ponderosa Village, Burns, OR 97720

id. The information contained herein was obtained from sources deemed to be reliable. Land id™ Services makes no warranties or guarantees as to the completeness or accuracy thereof.



39 Acres - Sodhouse lane - Houk
 Oregon, AC +/-



- ▭ Boundary
- ▭ Forest Service
- ▭ State Land
- ▭ Fish and Wildlife
- ▭ National Park
- ▭ Other
- ▭ BLM
- ▭ Local Government

United County Jett Blackburn Real Estate (map for illustration purposes only)
 P: 541-413-5660 www.jettblackburn.com 707 Ponderosa Village, Burns, OR 97720

id. The information contained herein was obtained from sources deemed to be reliable. Land id™ Services makes no warranties or guarantees as to the completeness or accuracy thereof.



United Country Jett Blackburn Real Estate

United Country is a franchise-based real estate marketing company that has shown tremendous success in the real estate industry for the last 95 years. Throughout the entire United States, UC has sold over 2.8 million acres in 2022 alone, with \$9.9 billion in sales all together that covered a majority of recreational, farms, & ranches. To help make these sales possible UC has a comprehensive marketing program that includes printed advertising and special property marketing websites for farms & ranches. These marketing sites include Western Livestock Journal, Land & Farm, Capital Press, Lands of America, Farm & Ranch, Lands.com, SPG's, and much more. They are partnered with Realtree United Country Hunting Properties & UC Ranch Properties.

Jett Blackburn Real Estate Inc. is an independently owned brokerage franchised under United Country. First opened in 1960, Jett Blackburn Real Estate has been the oldest standing firm in their area specializing in sales of farms, ranches, hunting properties, recreational, & more. Curt Blackburn is the current owner & principal broker of Jett Blackburn Real Estate.

Presented By



Curt Blackburn

curt@jettblackburn.com

(541)413-5777



Jake Blackburn

jake@jettblackburn.com

(541)413-5774