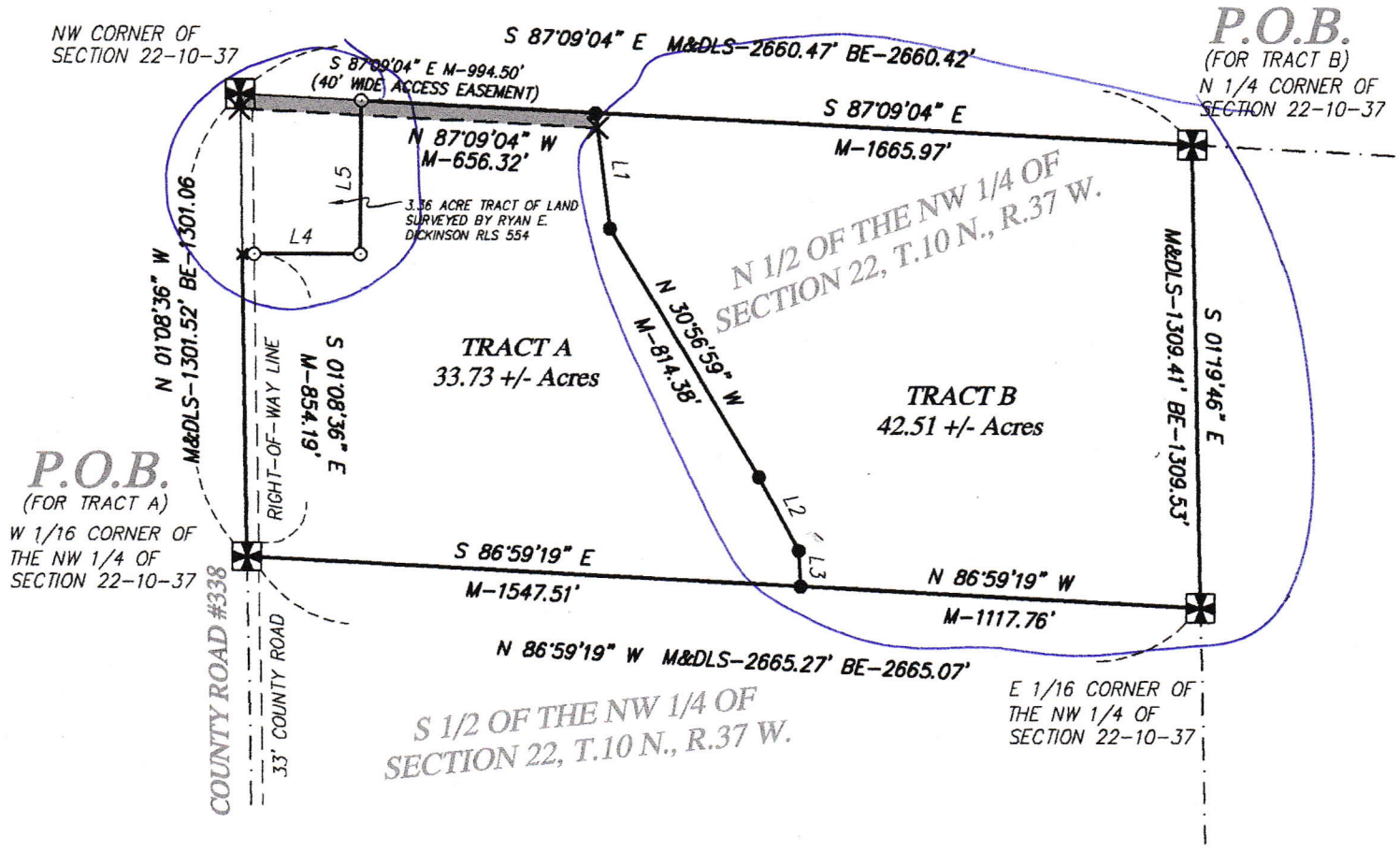


A SURVEY OF TWO TRACTS OF LAND AND AN ACCESS NW 1/4 OF SECTION 22, T.10 N., R.37 W. C



LEGAL DESCRIPTION FOR ACCESS EASEMENT FOR THE USE OF TRACT B

A 40.00 foot wide easement for access for Tract B, located in the N 1/2 of the NW 1/4 of Section 22, T.10 N., R.37 W. of the 6th P.M., Perkins County, Nebraska, the north line of the easement being more particularly described as follows:

Beginning at the NW Corner of the NW 1/4 of Section 22, T.10 N., R.37 W. of the 6th P.M., Perkins County, Nebraska; thence S 87°09'04" E on the north line of the NW 1/4 of said Section, 994.50 feet to the Point of Termination containing 0.91 +/- acres, more or less. Sidelines are to be prolonged or shortened to fit the grantor's lines.

LEGAL DESCRIPTION FOR TRACT A:

A tract of land located in the N 1/2 of the NW 1/4 of Section 22, T.10 N., R.37 W. of the 6th P.M., Perkins County, Nebraska, being more particularly described as follows:

Beginning at the W 1/16 Corner of the NW 1/4 of Section 22, T.10 N., R.37 W. of the 6th P.M., Perkins County, Nebraska; thence S 86°59'19" E on the south line of the N 1/2 of the NW 1/4 of said Section, 1547.51 feet; thence N 03°08'22" W 101.72 feet; thence N 28°11'19" W 237.75 feet; thence N 30°56'59" W 814.38 feet; thence N 07°17'08" W to a point on the north line of said NW 1/4, 326.22 feet; thence N 87°09'04" W on the north line of said NW 1/4, 656.32 feet to the west line of a 3.36 acre tract of land surveyed by Ryan E. Dickinson, RLS 554, dated 1-17-2023; thence

LEGAL DESCRIPTION FOR TRACT B:

A tract of land located in the N 1/2 of the NW 1/4 of Section 22, T.10 N., R.37 W. of the 6th P.M., Perkins County, Nebraska, being more particularly described as follows:

Beginning at the N 1/4 Corner of Section 22, T.10 N., R.37 W. of the 6th P.M., Perkins County, Nebraska; thence S 01°19'46" E the east line of the NW 1/4 of said Section, 1309.41 feet to the E 1/16 corner of the said NW 1/4; thence N 86°59'19" W the south line of the N 1/2 of the NW 1/4 of said Section, 1117.76 feet; thence N 03°08'22" W 101.72 feet; thence N 28°11'19" W 237.75 feet; thence N 30°56'59" W 814.38 feet; thence N 07°17'08" W 326.22 feet to a point on the north line of said NW 1/4, 326.22 feet; thence N 87°09'04" W on the north line of said NW 1/4, 656.32 feet to the west line of a 3.36 acre tract of land surveyed by Ryan E. Dickinson, RLS 554, dated 1-17-2023; thence