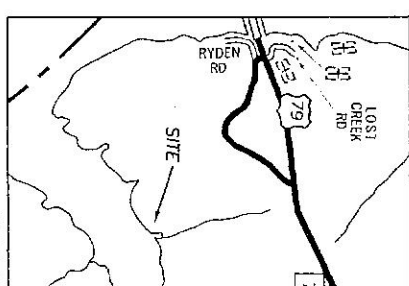


**RESUBDIVISION
RIVERTRACE II**

TENTH CIVIL
STEWART COUNT
REFERENCE: DEED BOOK
PLAT CABINET
TAX MAP 91

TOTAL AREA = 4.00

NOTE: THIS PROPERTY
AND ALL EASEMENTS
RESTRICTIONS, EITHER WHOLLY
OR PARTIALLY, ARE SHOWN
HEREIN.



VICINITY
NOT TO SCALE

I HEREBY CERTIFY THAT THIS IS A CATEGORY 1 SURVEY. THE PRECISION OF THE UNADJUSTED SURVEY IS AS STATED BY THE METERS AND FEET. THE SURVEY WAS ADJUSTED USING THE COMPASS RULE.

DATE: JANUARY 09, 2008

LUCILE D. SMITH, R.L.S.
TENNESSEE REGISTRATION NO. 1508



L. I. SMITH & ASSOCIATES, INC.
SURVEYORS & ENGINEERS

731-644-1014

1118

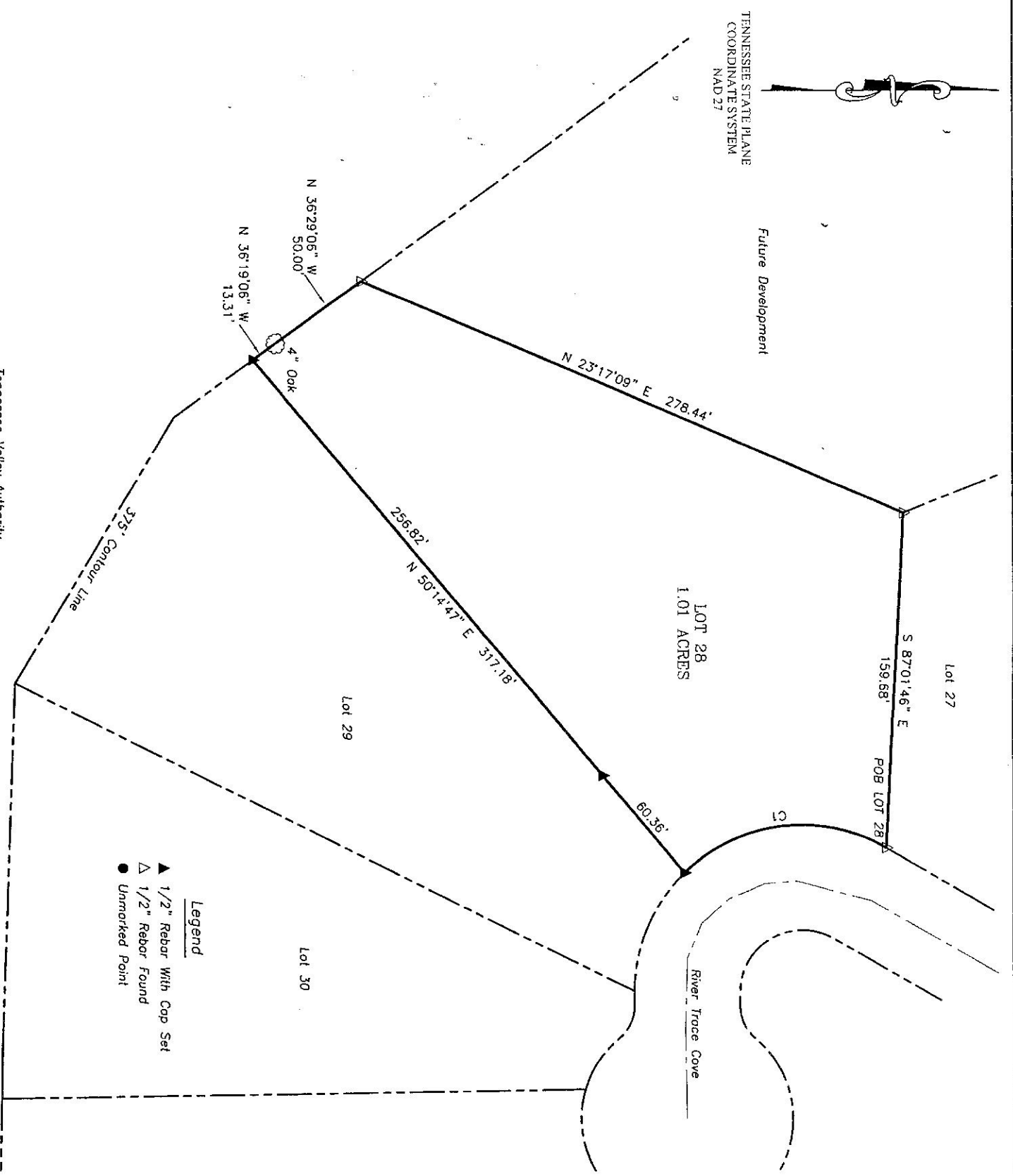
© 2006 L. I. SMITH & ASSOCIATES, INC.
DRAWN BY: SGS
PROJECT # S91 - 5 / 5703



Tennessee Valley Authority
Standing Rock Creek Embayment

TENNESSEE STATE PLANE
COORDINATE SYSTEM
NAD 27

Future Development



Legend

- ▲ 1/2" Rebar With Cop Set
- △ 1/2" Rebar Found
- Unmarked Point

CURVE	RADIUS	ARC LENGTH	CHORD LENGTH	CHORD BEARING
C1	79.41'	103.49'	96.32'	S 07°06'49" E